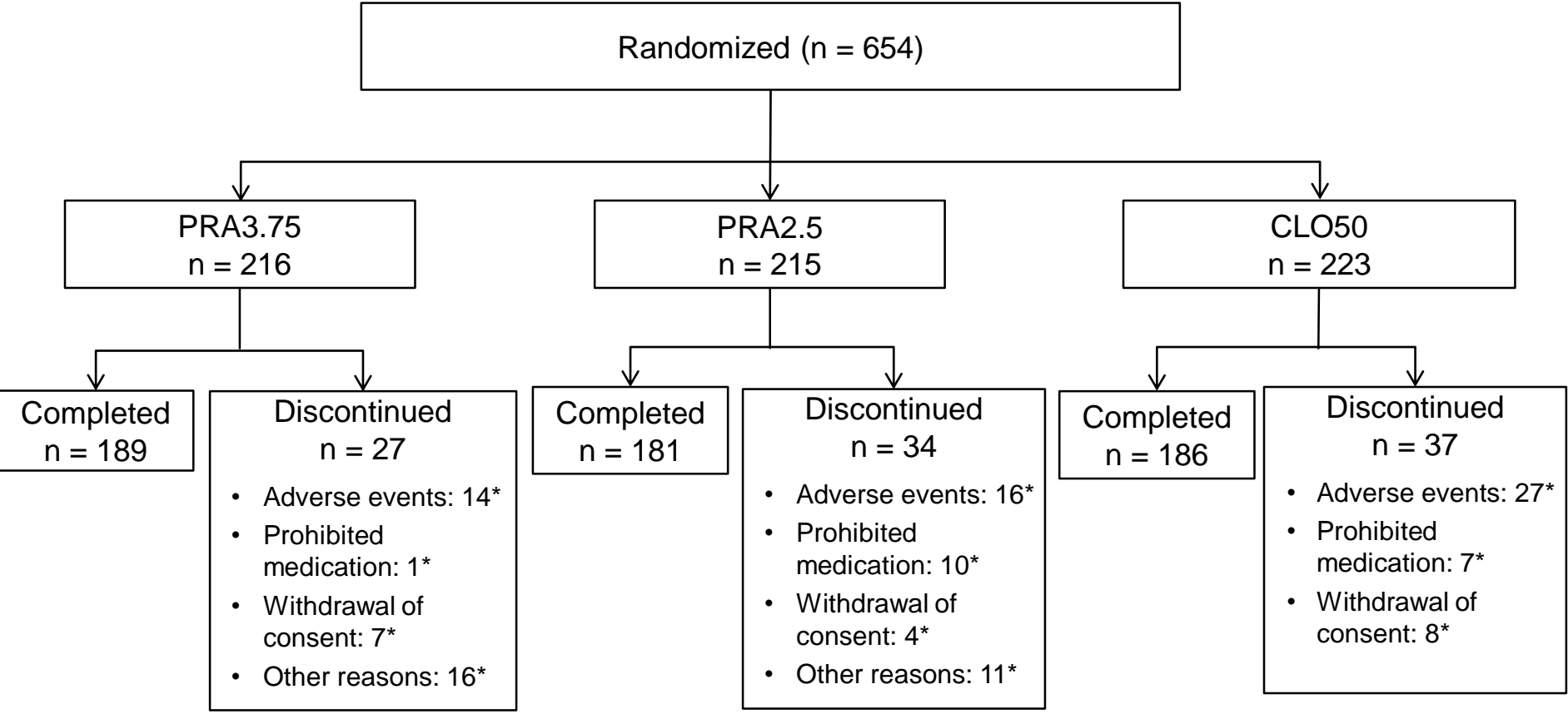
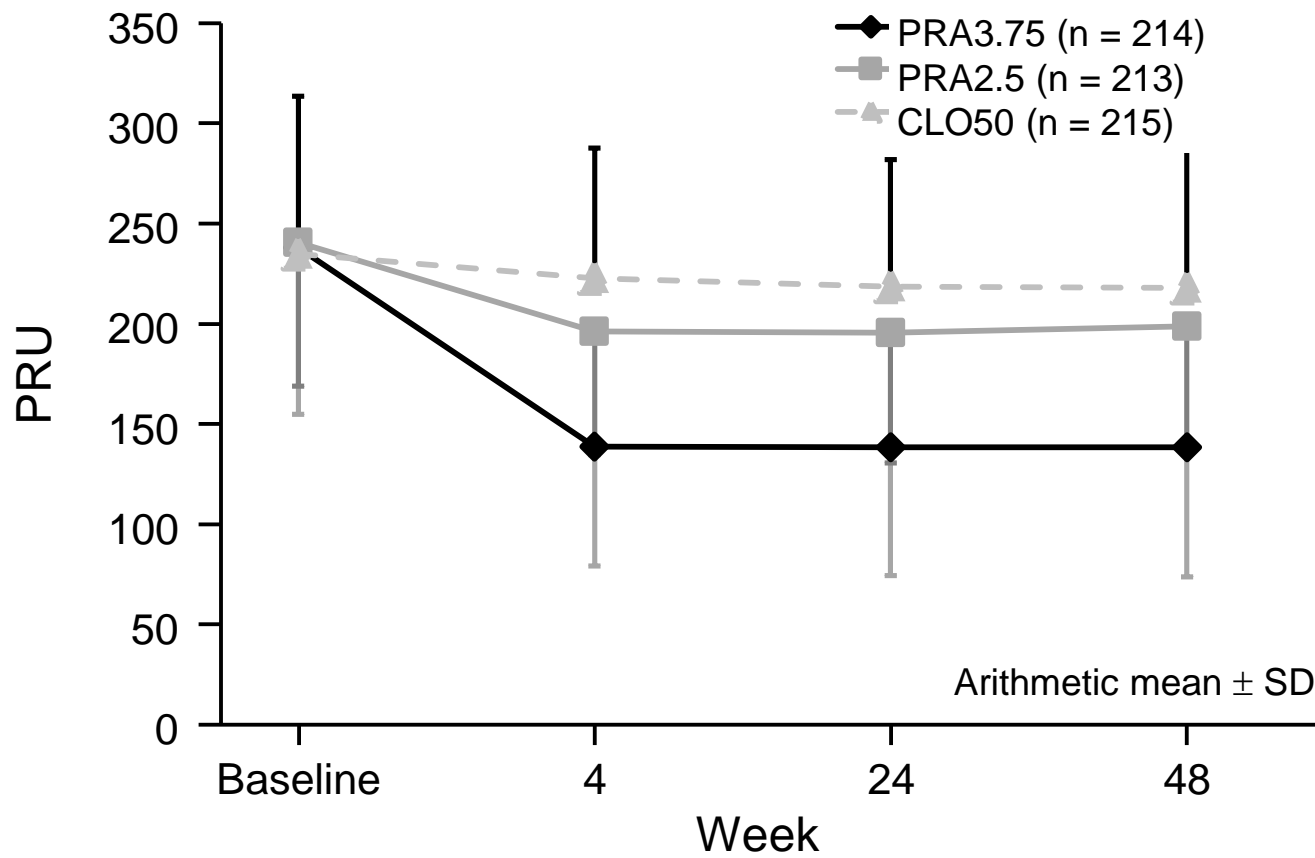


Supplemental Fig. 1. Progress of patients in the PRASTRO-II trial.



*Numbers may include duplicate counts

Supplemental Fig. 2A. Changes in P2Y12 reaction unit (PRU) values over the study period.



Supplemental Fig. 2B. P2Y12 reaction unit (PRU) values at week 4, according to CYP2C19 phenotype. ○●□, Arithmetic mean; +, values between 1.5*IQR and 3*IQR from UQ/LQ; IQR, interquartile range; UQ, 75th percentile; LQ, 25th percentile; PRA3.75, prasugrel 3.75 mg; PRA2.5, prasugrel 2.5 mg; CLO50, clopidogrel 50 mg.

