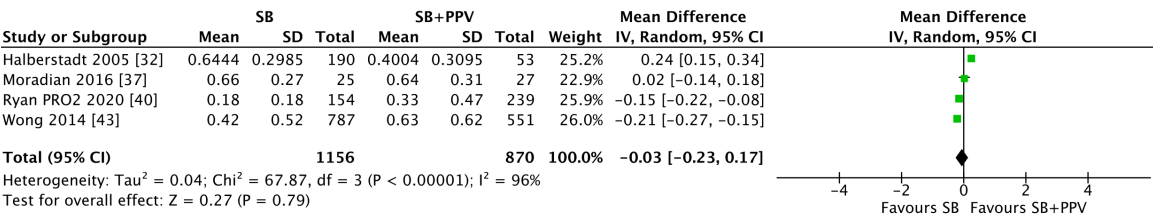
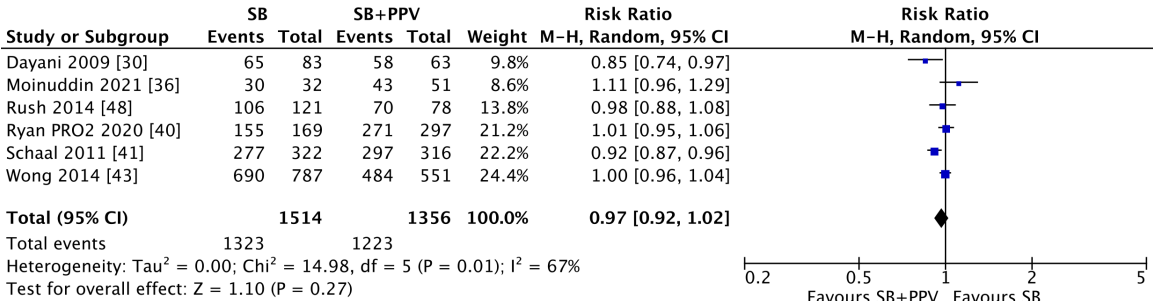


S8A



S8B



S8C

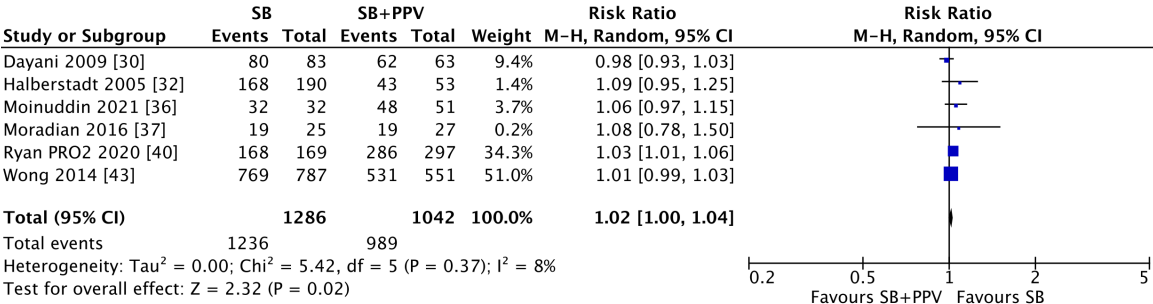


Figure S8. Forest plots of a subgroup efficacy analyses of SB versus SB+PPV for the surgical management of RRD after exclusion of studies with significant proliferative vitreoretinopathy (i.e., grade C or worse) illustrating the **(A)** BCVA at last follow-up; **(B)** primary reattachment rate; and **(C)** final reattachment rate. CI = confidence interval; BCVA = best-corrected visual acuity; SB = scleral buckling; SB+PPV = combined scleral buckling and pars plana vitrectomy; SD = standard deviation