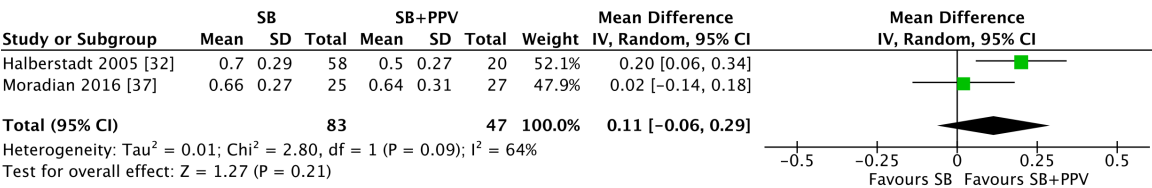
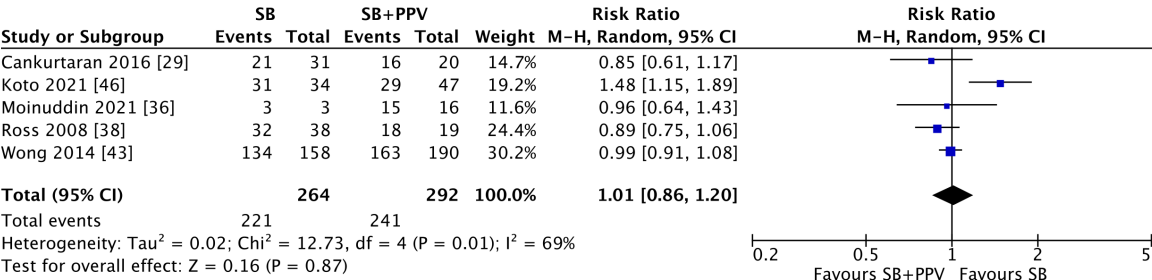


S5A



S5B



S5C

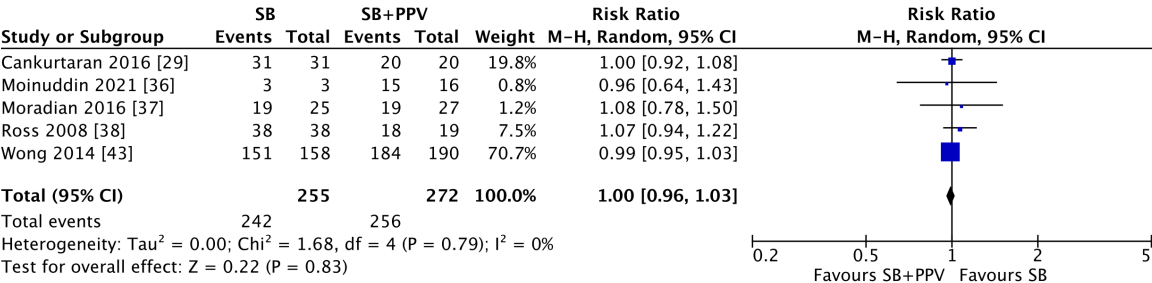


Figure S5. Forest plots of a subgroup efficacy analyses of SB versus SB+PPV for the surgical management of RRD based on eyes with a pseudophakic lens status illustrating the (A) BCVA at last follow-up; (B) primary reattachment rate; and (C) final reattachment rate. CI = confidence interval; BCVA = best-corrected visual acuity; SB = scleral buckling; SB+PPV = combined scleral buckling and pars plana vitrectomy; SD = standard deviation