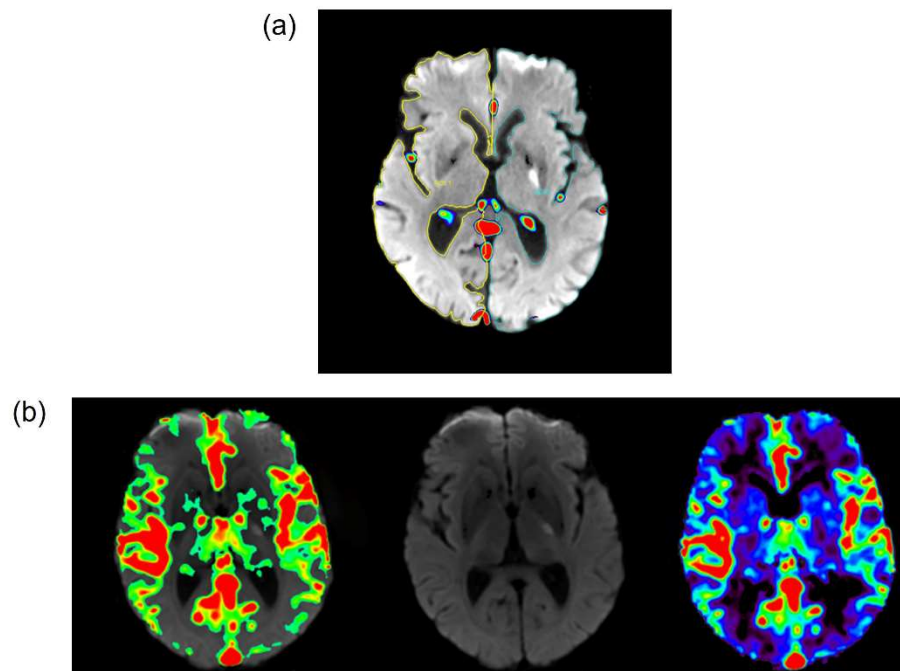


Supplementary Figure 1: Co-registration of CBF and DWI



(a) ROI Illustration: ROI1, contralateral hemisphere; ROI2, lesion hemisphere.

(b) A sample of co-registration of CBF and DWI. (left to right: Co-registration of CBF map and DWI, DWI, and CBF map).

Abbreviations: ROI: region of interest; CBF: cerebral blood flow; DWI: diffusion-weighted imaging