

Figure 1: Frequency distribution of the weight by age group and by gender.

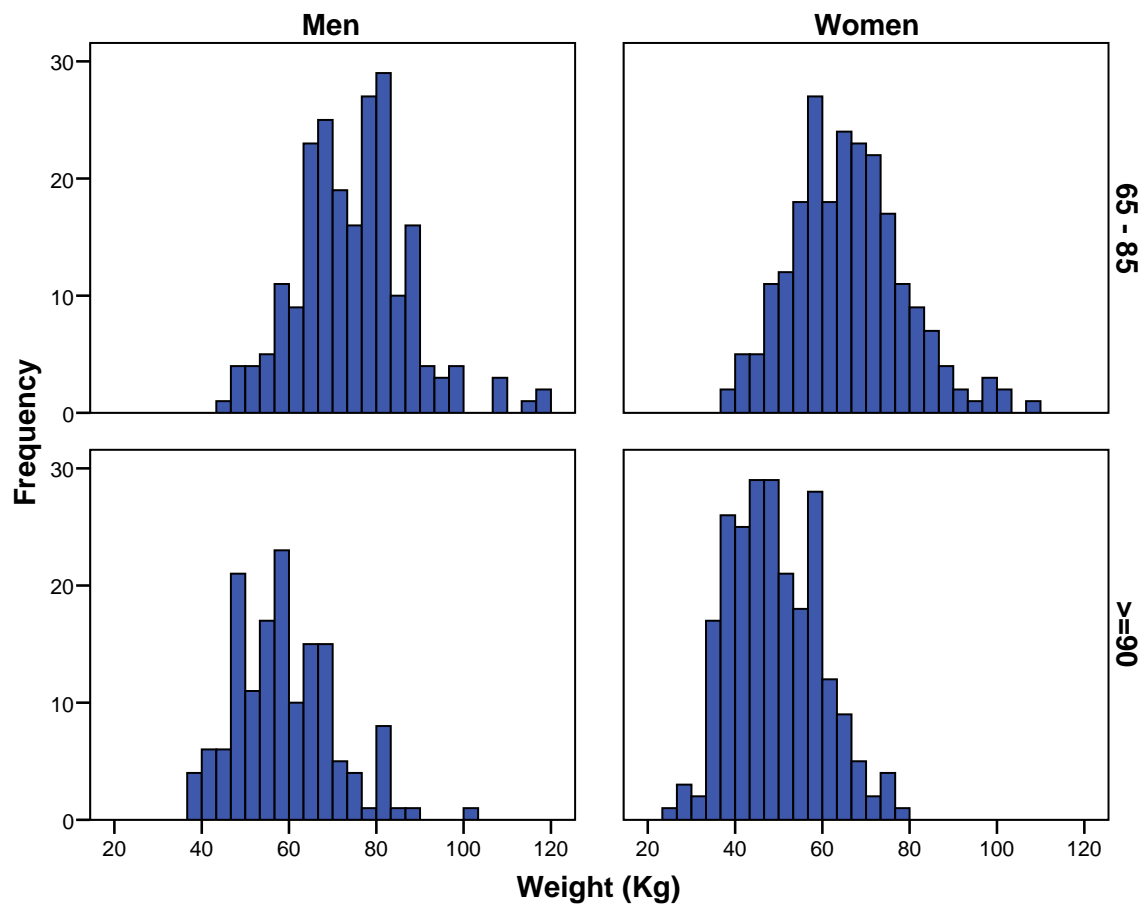


Figure 2: Frequency distribution of the height by age group and by gender.

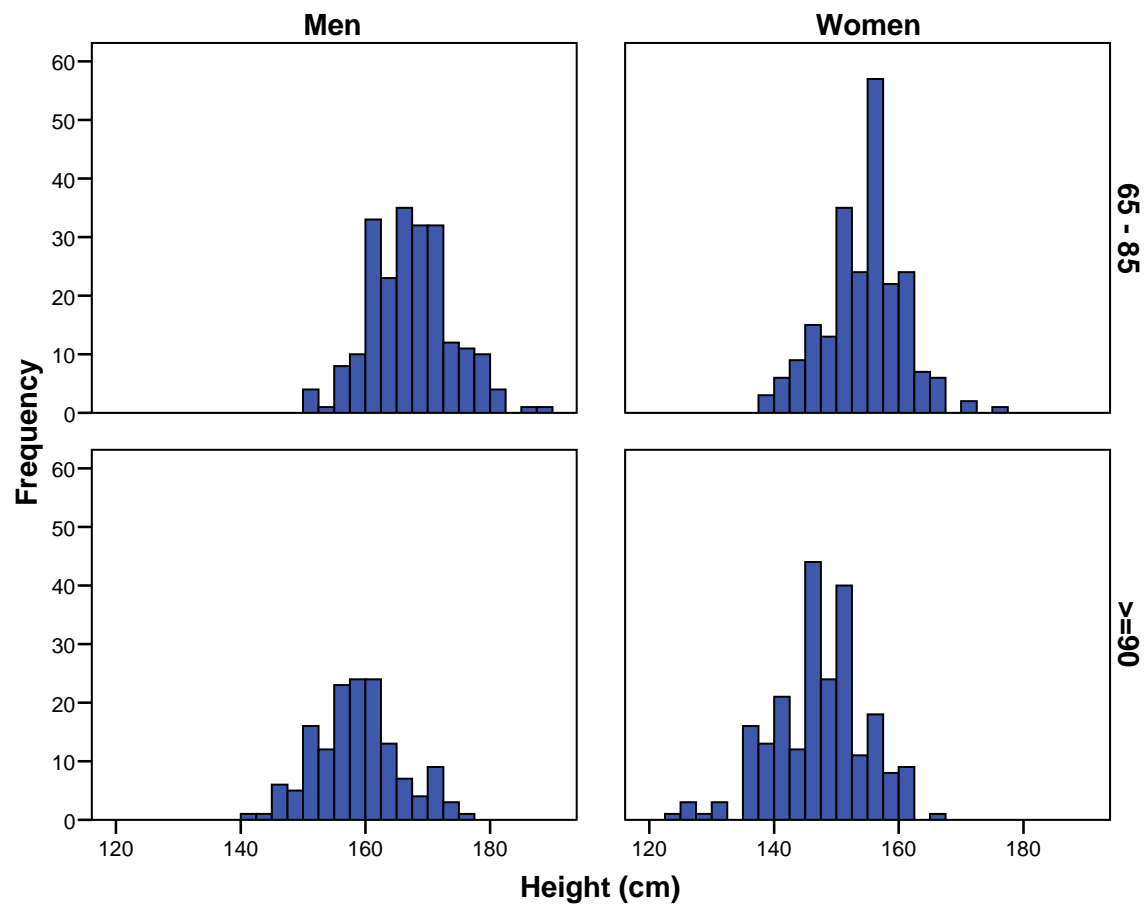


Figure 3: Frequency distribution of the body mass index (BMI) by age group and by gender.

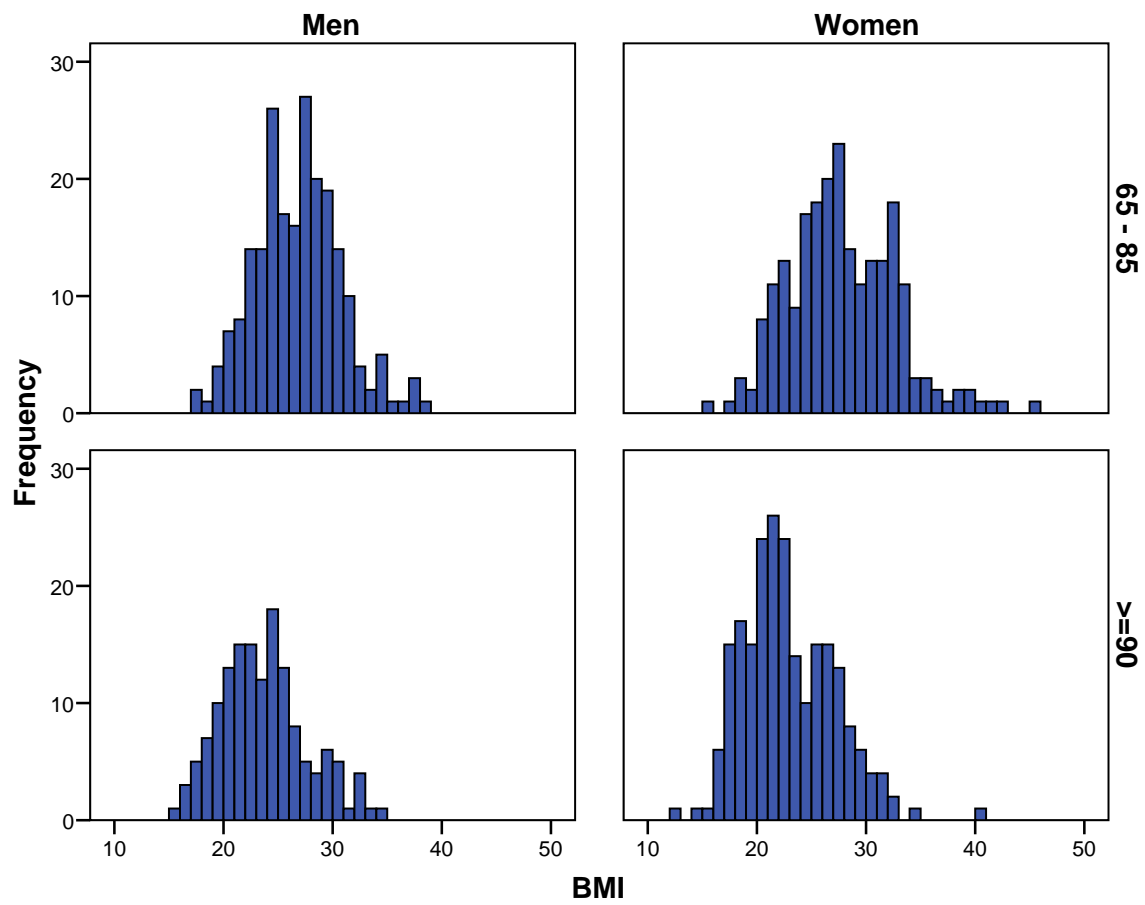


Figure 4: Frequency distribution of the geriatric depression scale (GDS) scores by age group and by gender.

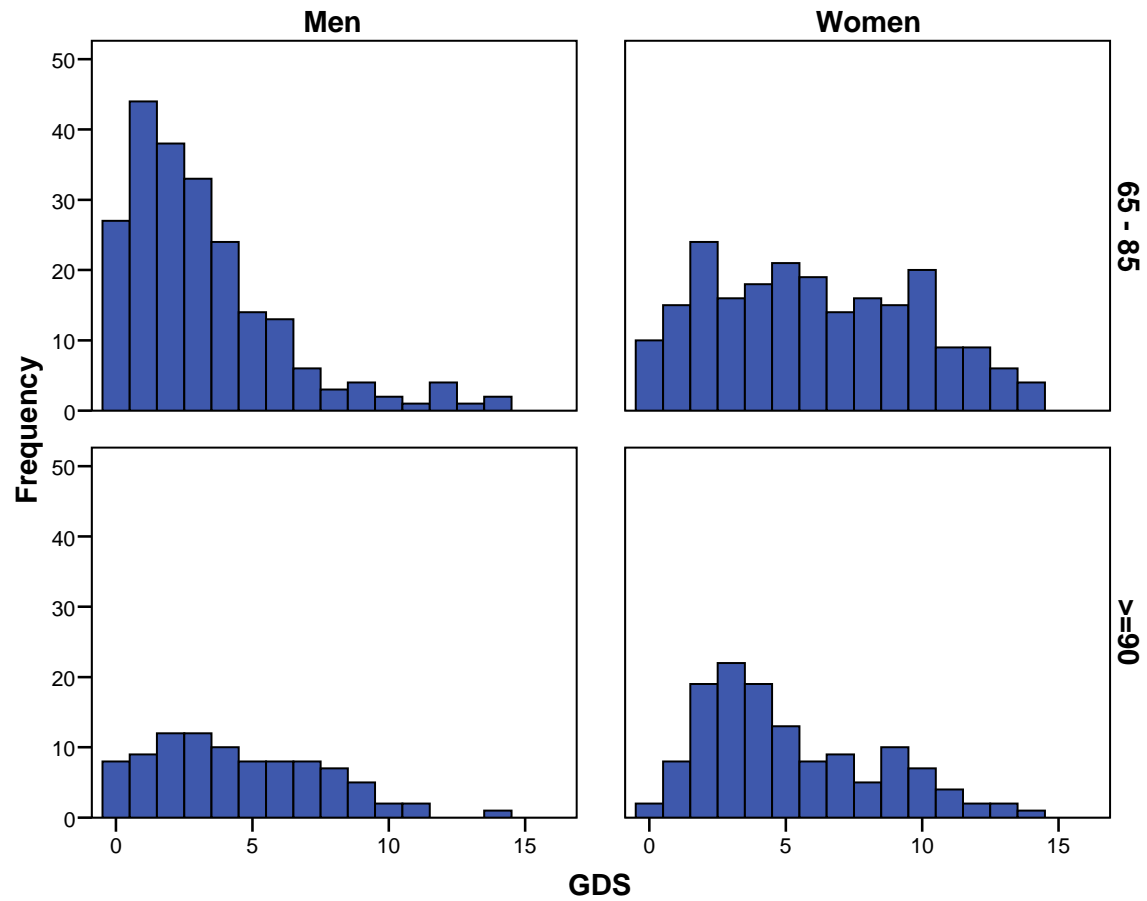


Figure 5: Frequency distribution of the mini mental state examination (MMSE) scores by age group and by gender.

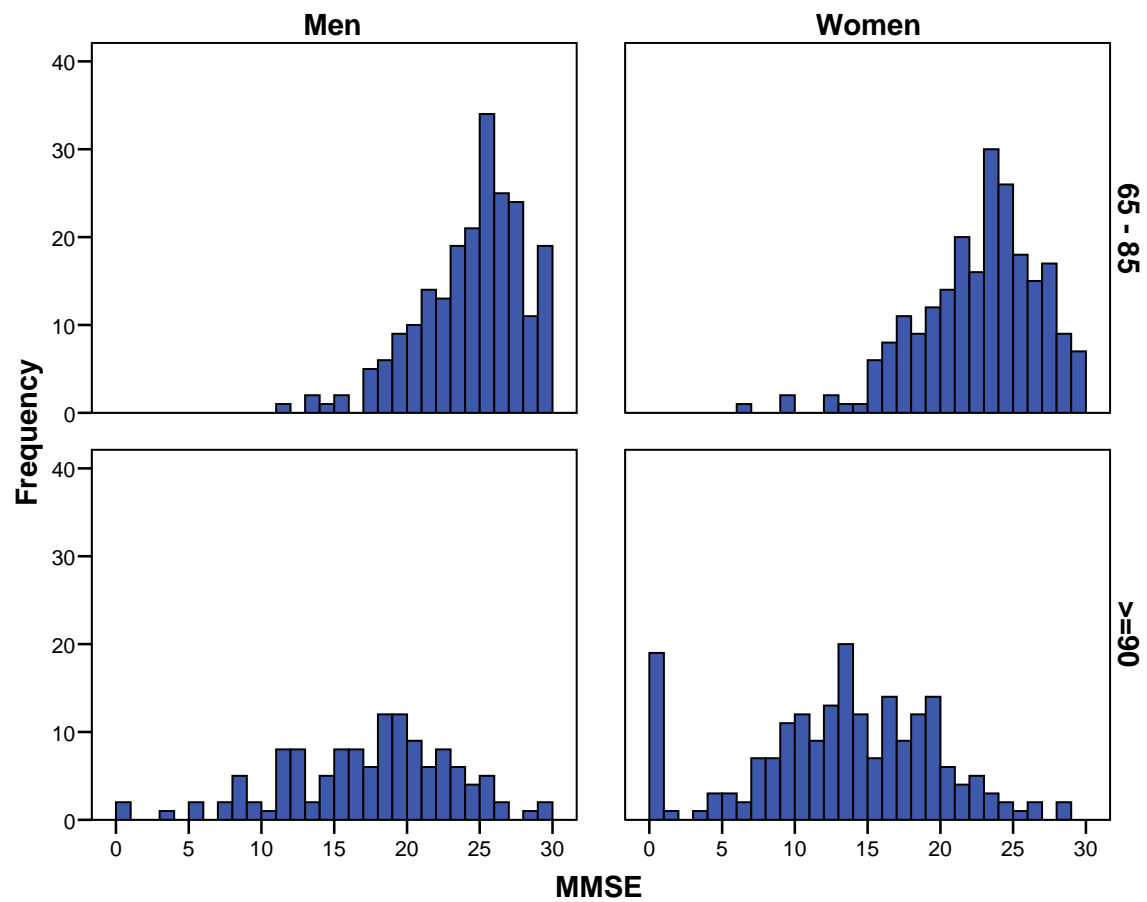


Figure 6: Frequency distribution of the activity of daily living (ADL) by age group and by gender.

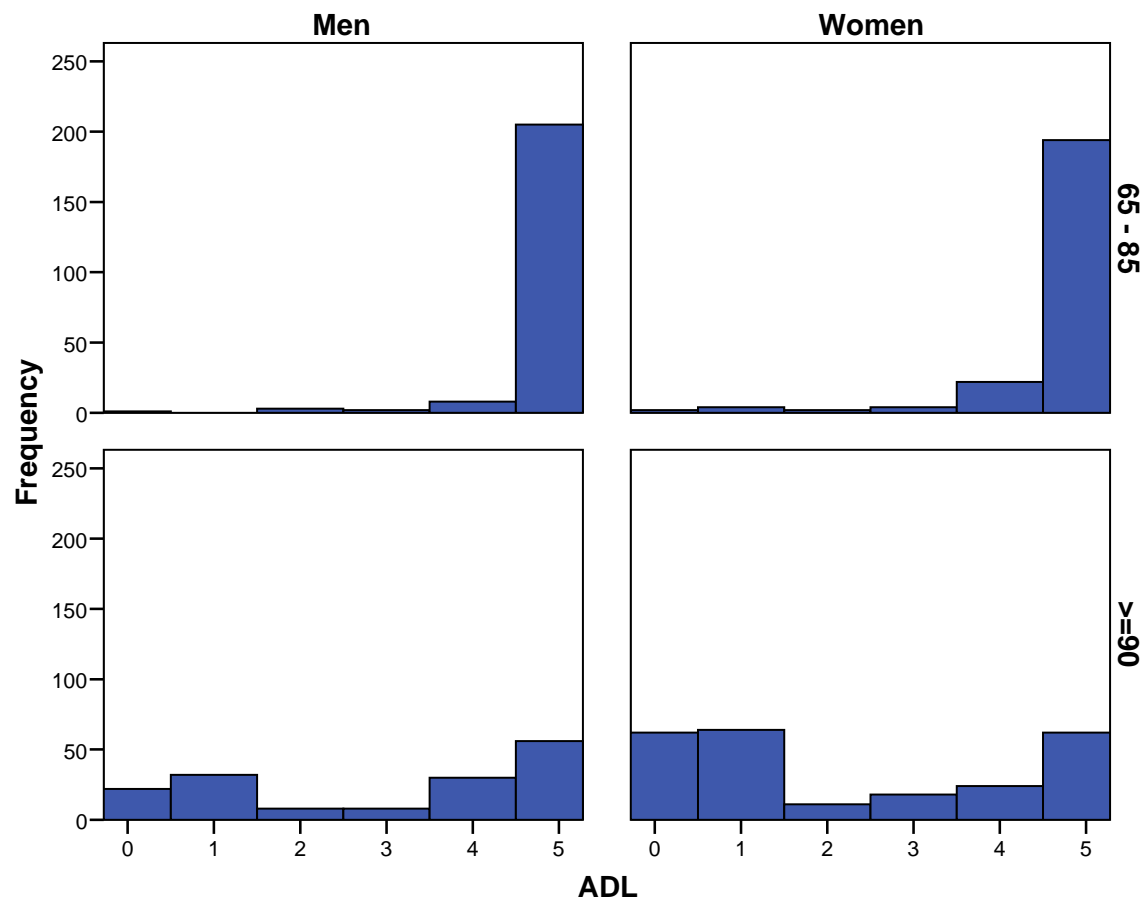


Figure 7: Frequency distribution of the hand grip by age group and by gender.

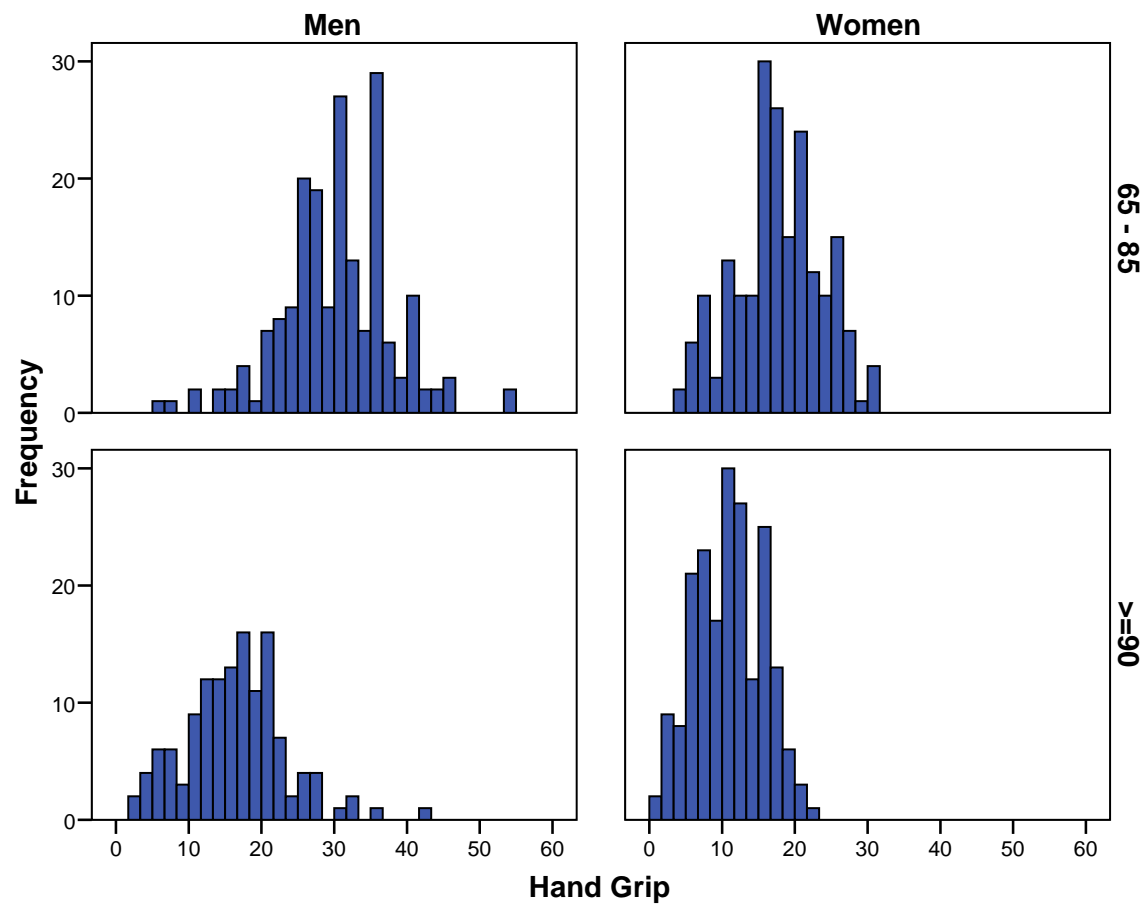


Figure 8: Frequency distribution of the plasma level of glucose by age group and by gender.

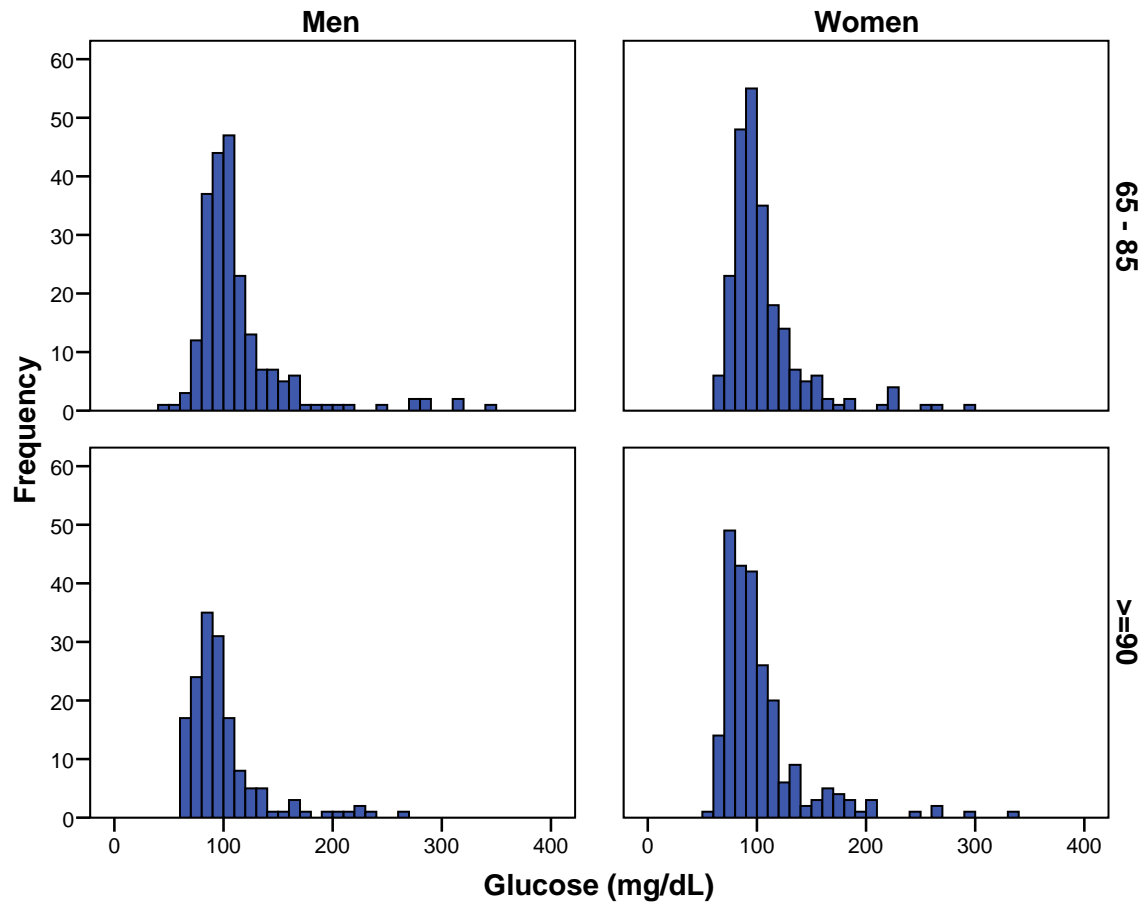


Figure 9: Frequency distribution of the plasma level of HBA1c glycated hemoglobin by age group and by gender.

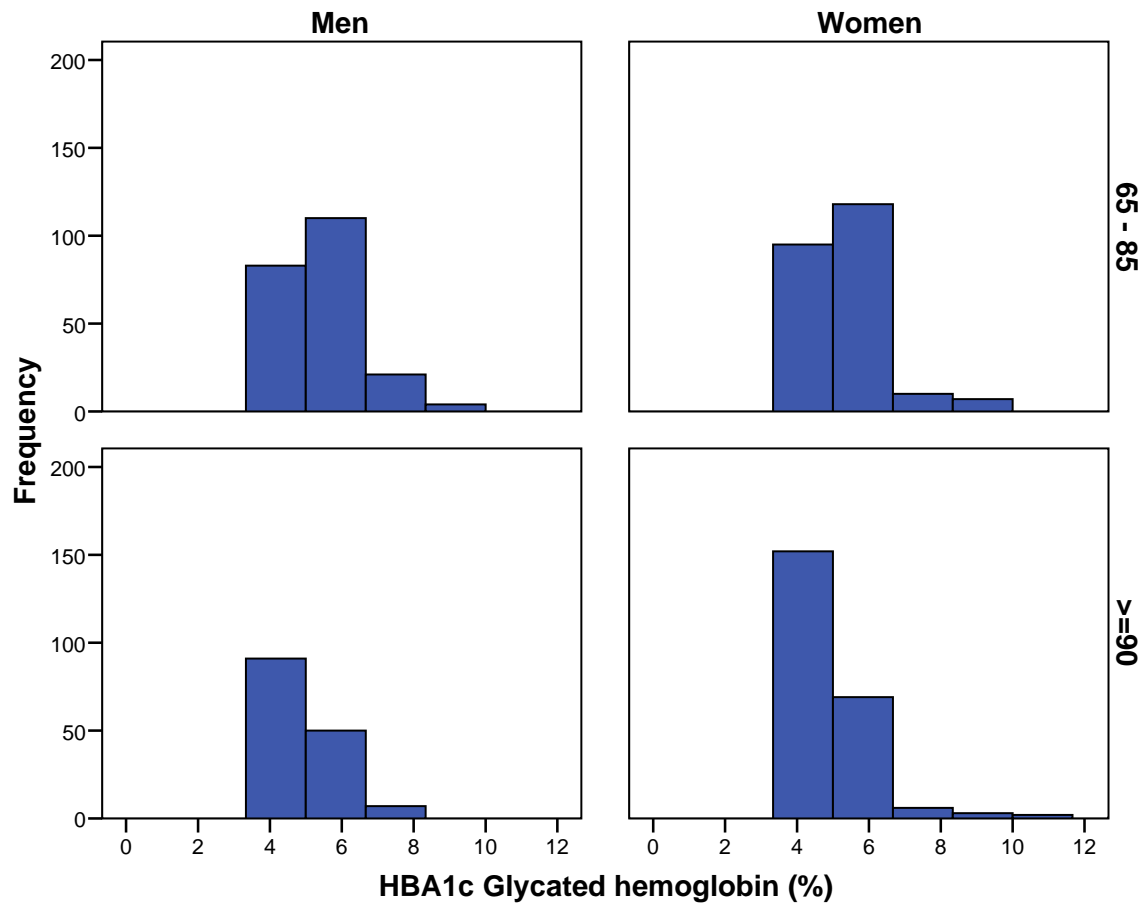


Figure 10: Frequency distribution of the plasma level of urea by age group and by gender.

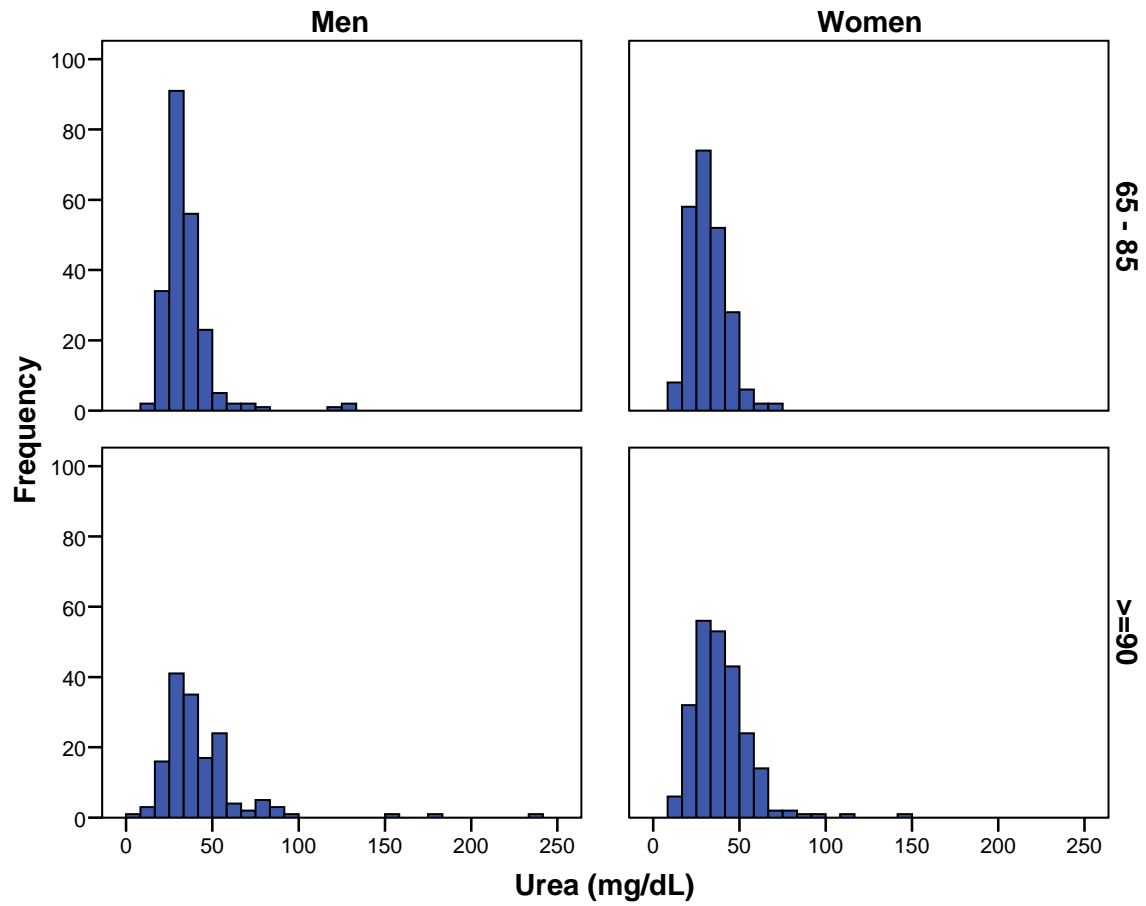


Figure 11: Frequency distribution of the plasma level of creatinine by age group and by gender.

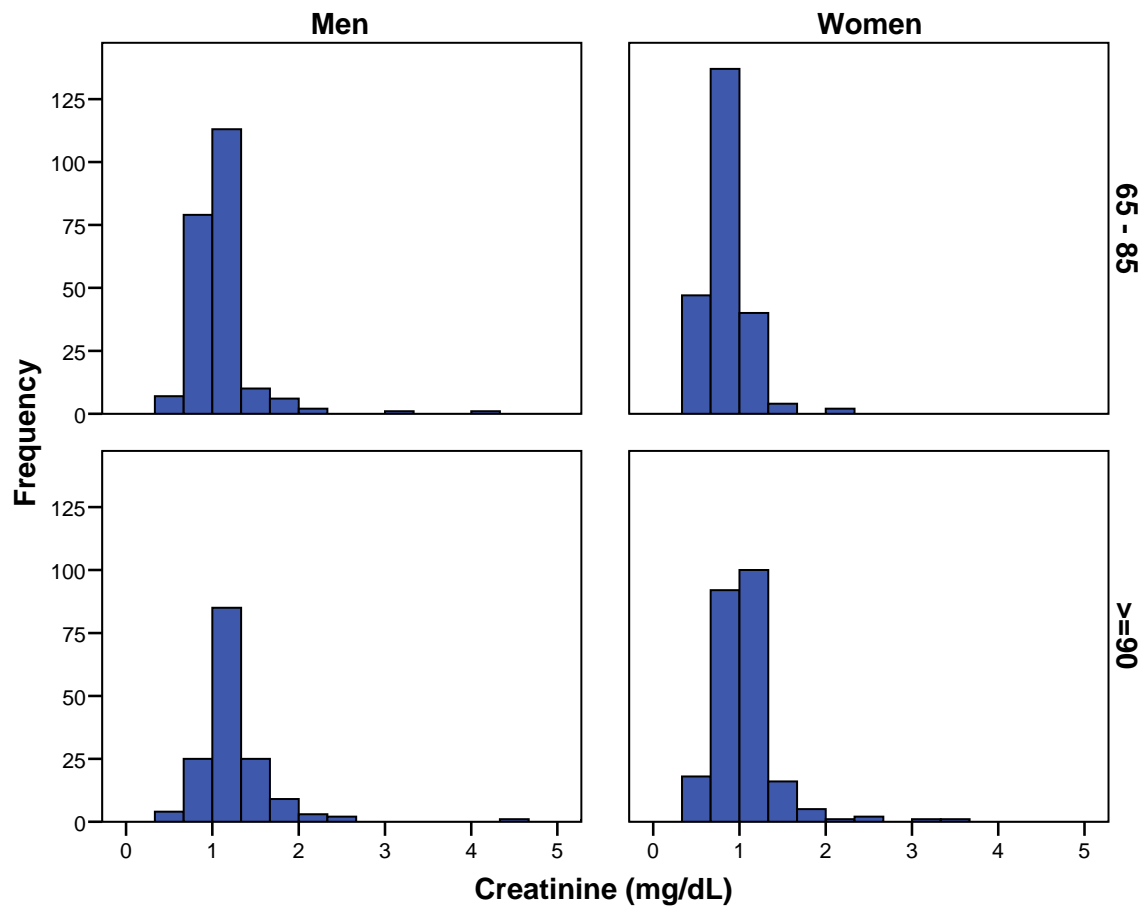
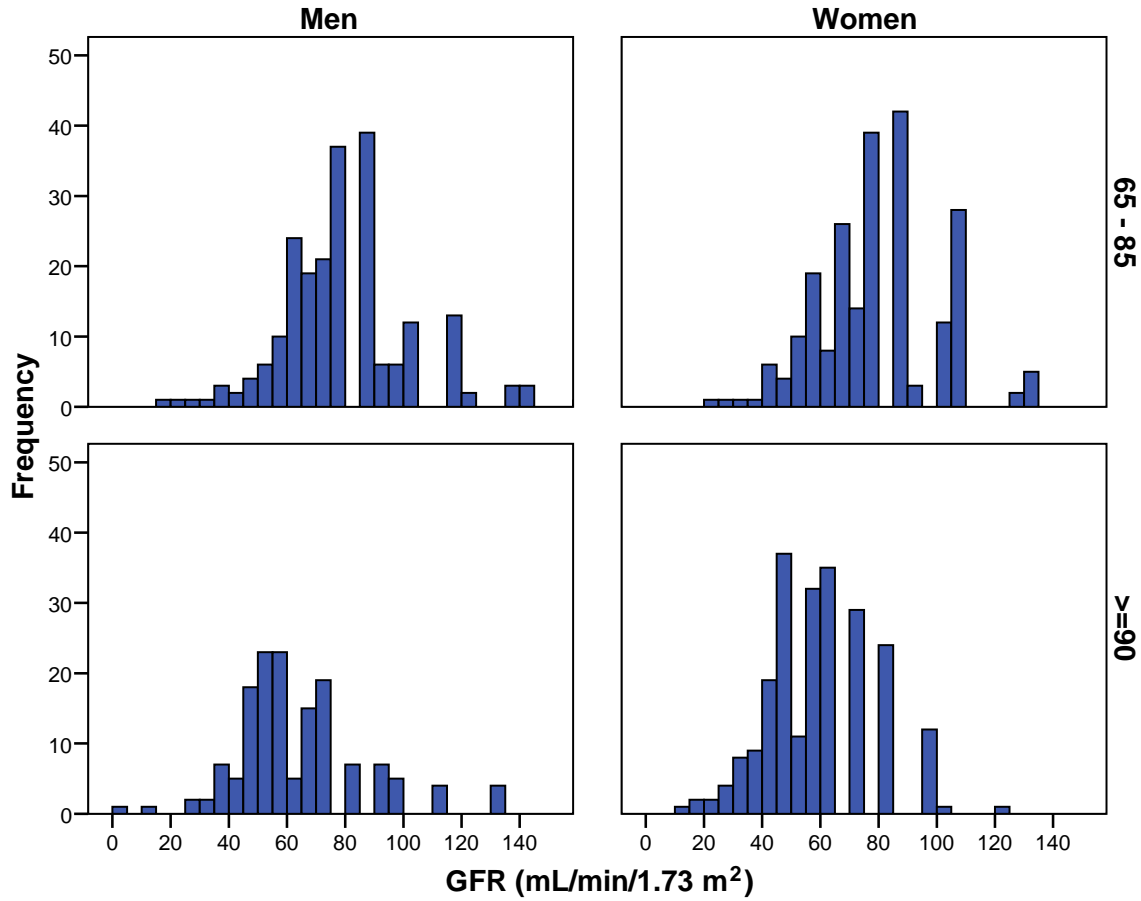


Figure 12: Distribution of the estimated Glomerular Filtration Rate based on the MDRD equation* by age group and by gender.



* Levey AS, Bosch JP, Cusek JW, Beck GJ, MDRD study group. A simplified equation to predict glomerular filtration rate from serum creatinine. J Am Soc Nephrol 2000; 11: A0828 30. Go AS, Chertow GM, Fan D, McCulloch.

Figure 13: Frequency distribution of the plasma level of uric acid by age group and by gender.

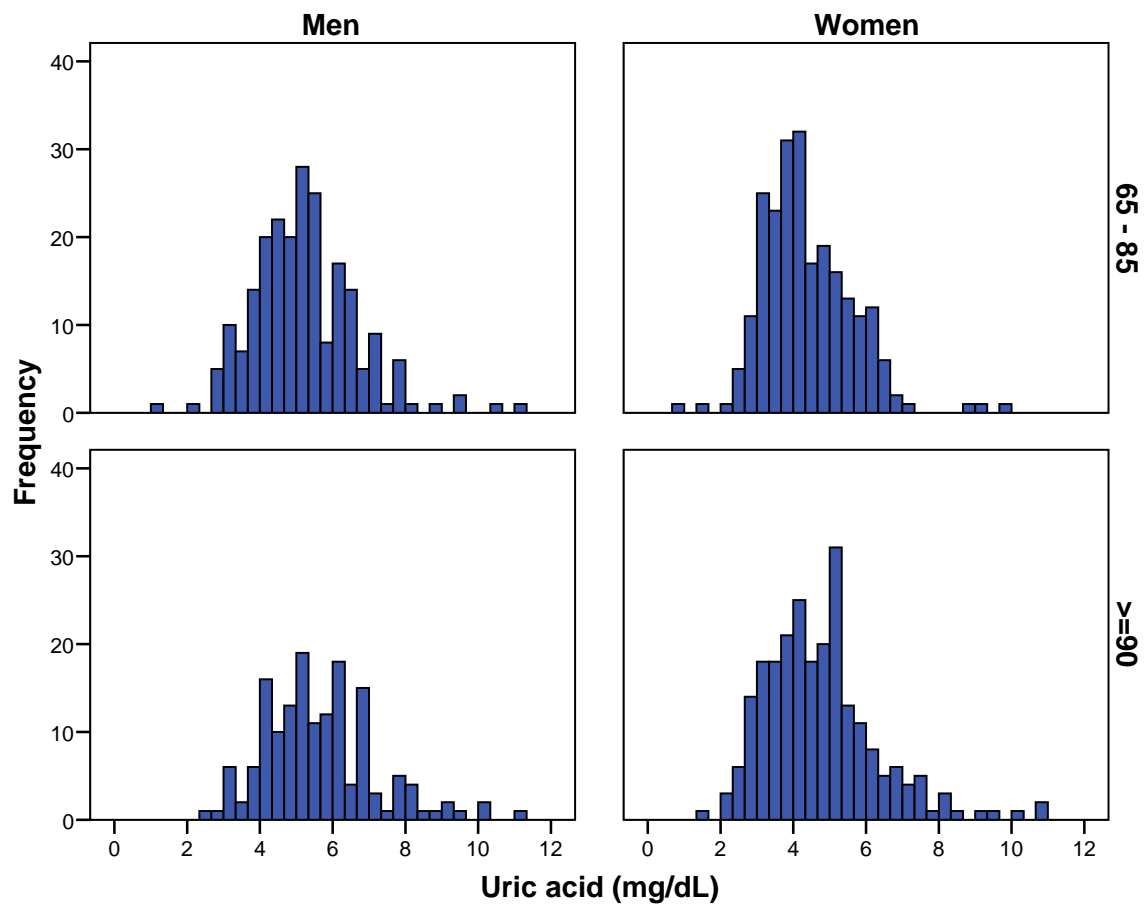


Figure 14: Frequency distribution of the plasma level of sodium by age group and by gender.

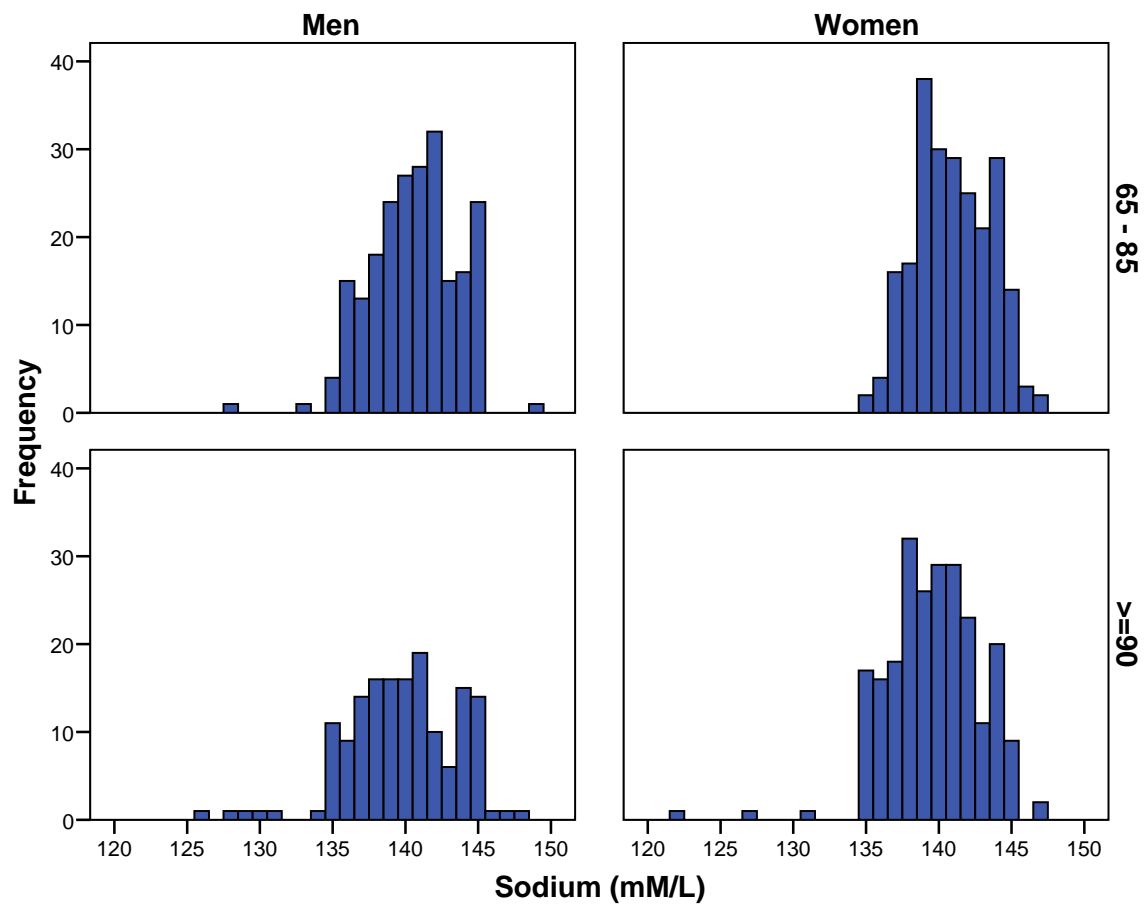


Figure 15: Frequency distribution of the plasma level of potassium by age group and by gender.

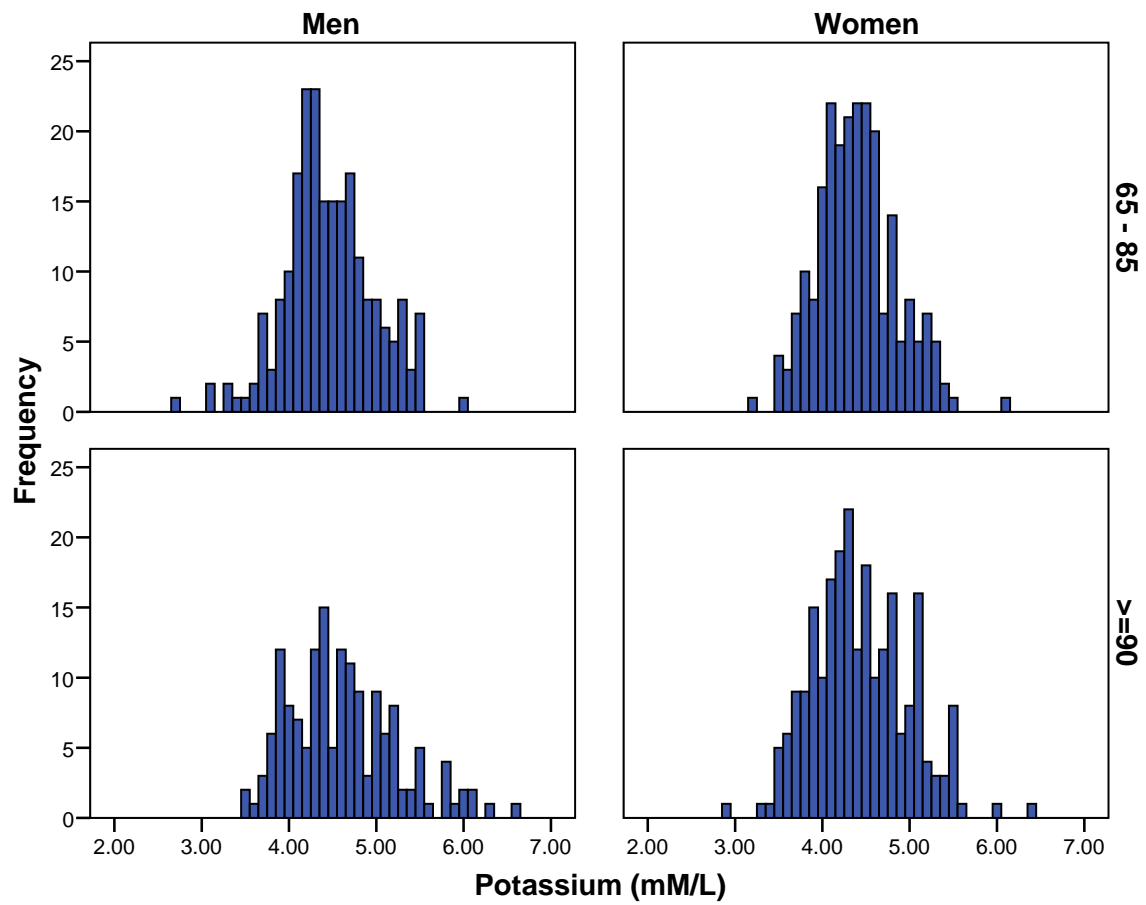


Figure 16: Frequency distribution of the plasma level of clorure by age group and by gender.

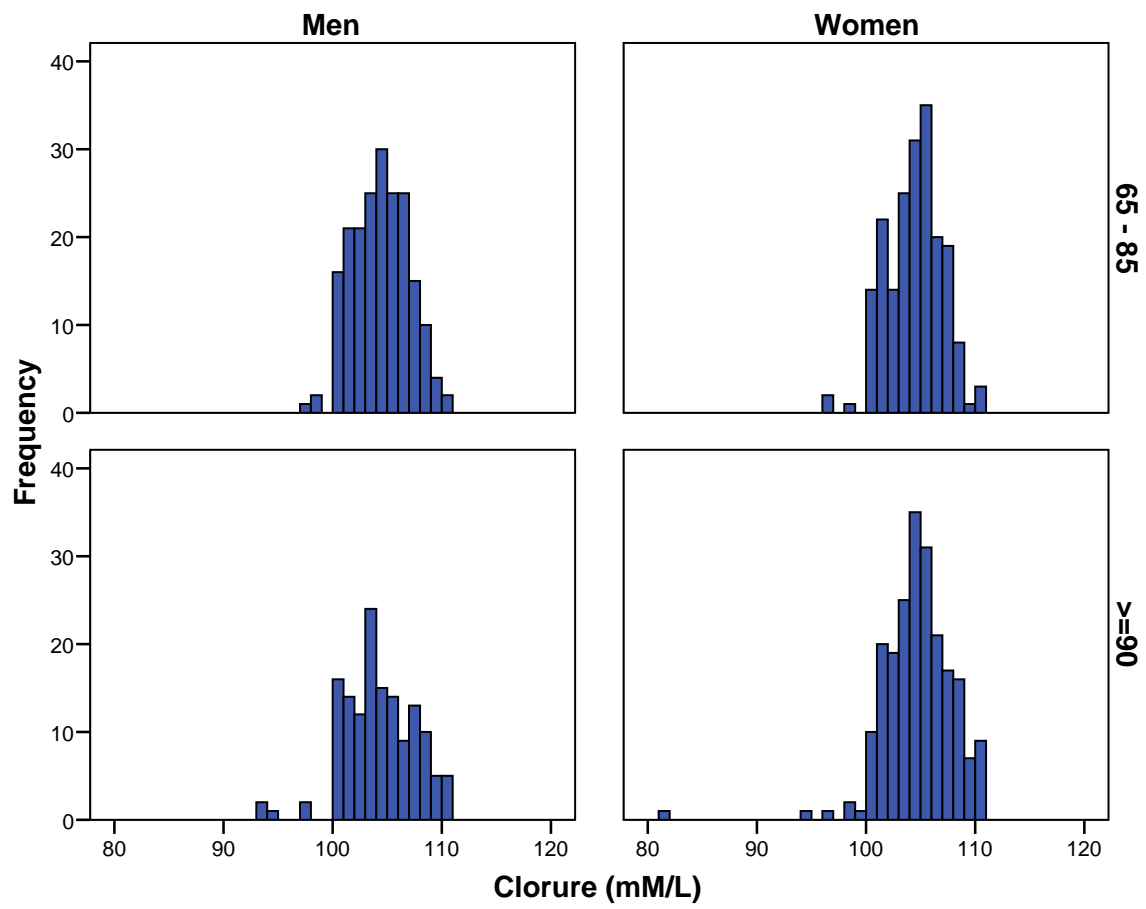


Figure 17: Frequency distribution of the plasma level of calcium by age group and by gender.

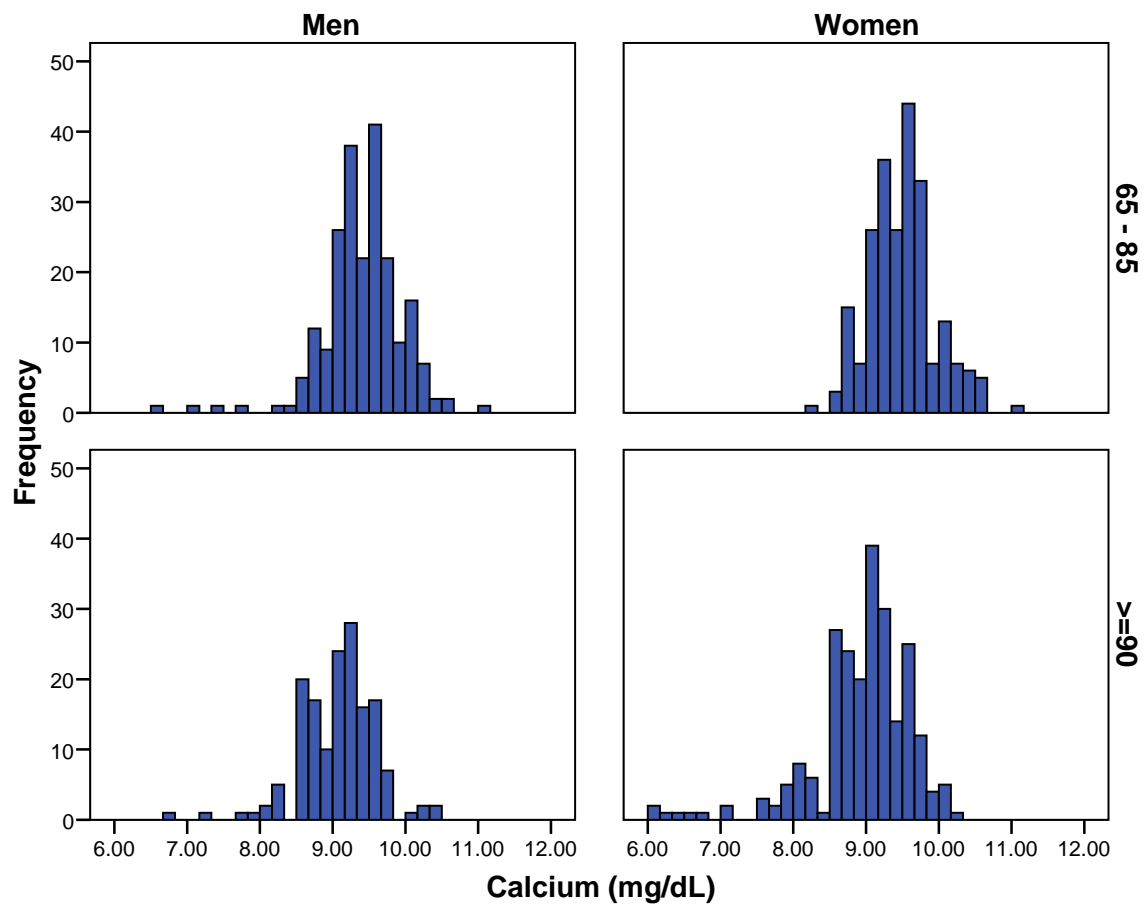


Figure 18: Frequency distribution of the plasma level of phosphorus by age group and by gender.

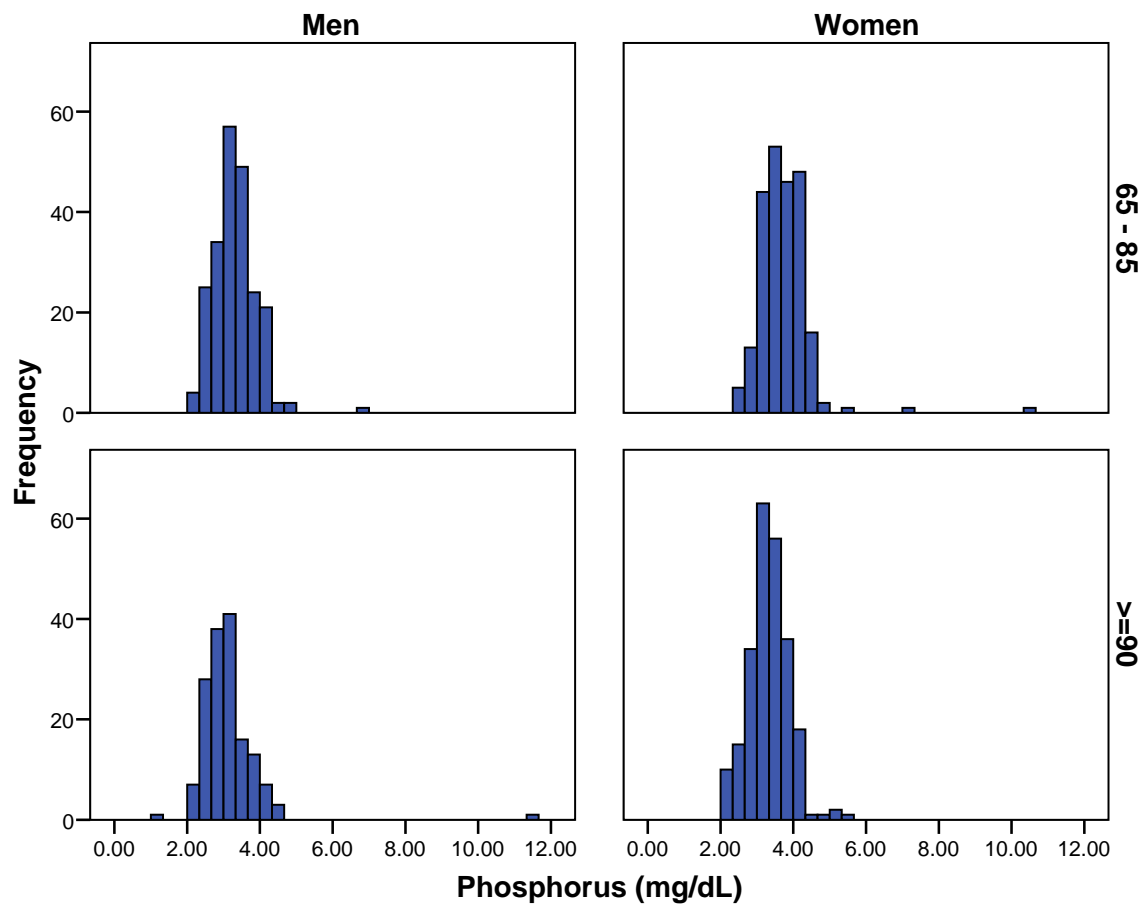


Figure 19: Frequency distribution of the plasma level of magnesium by age group and by gender.

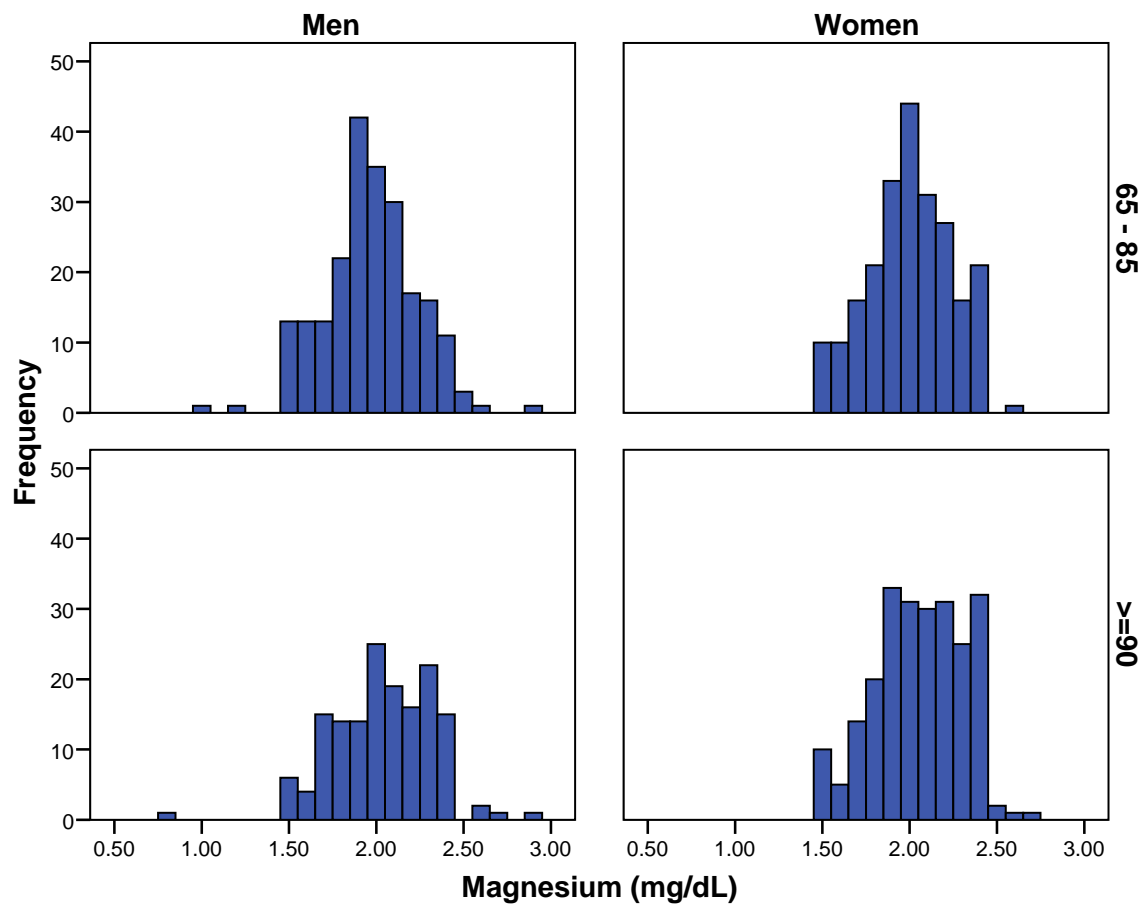


Figure 20: Frequency distribution of the plasma level of aspartate aminotransferase (AST) by age group and by gender.

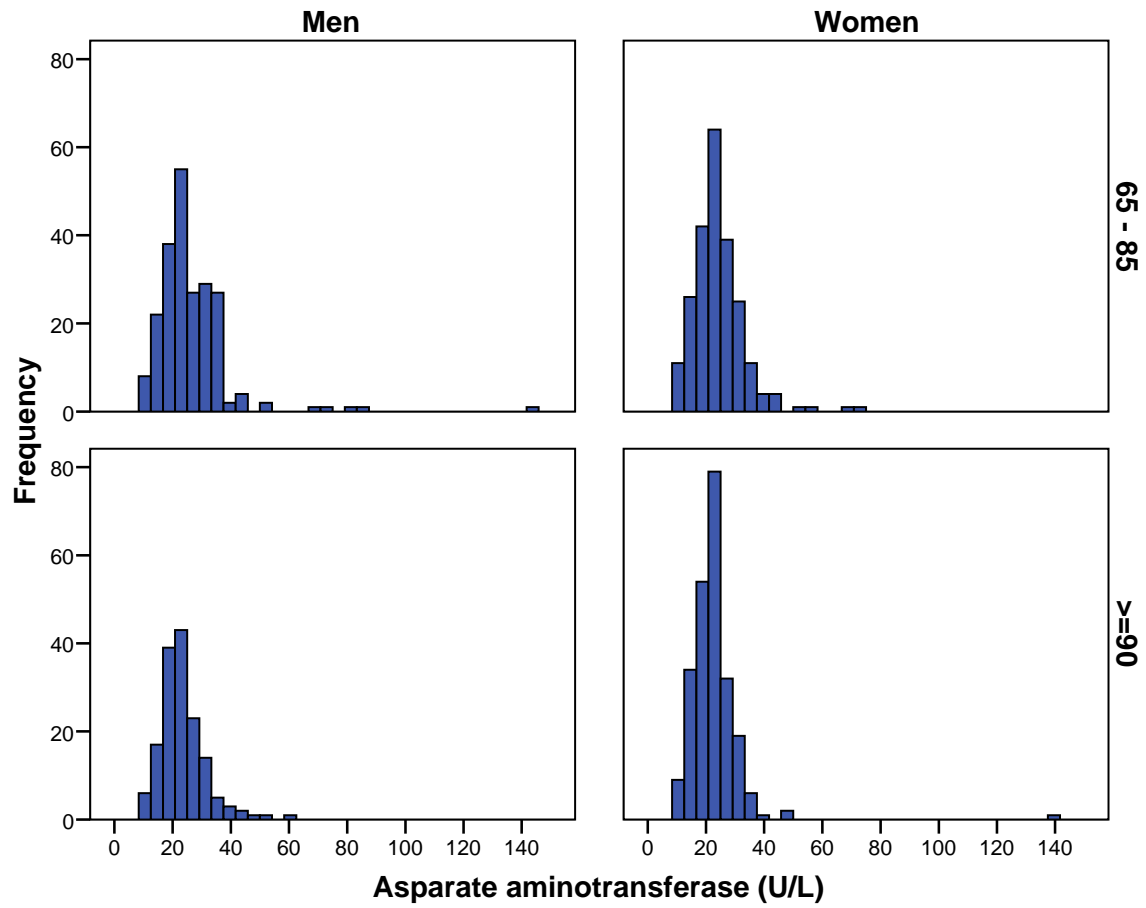


Figure 21: Frequency distribution of the plasma level of alanine aminostransferase (ALT) by age group and by gender.

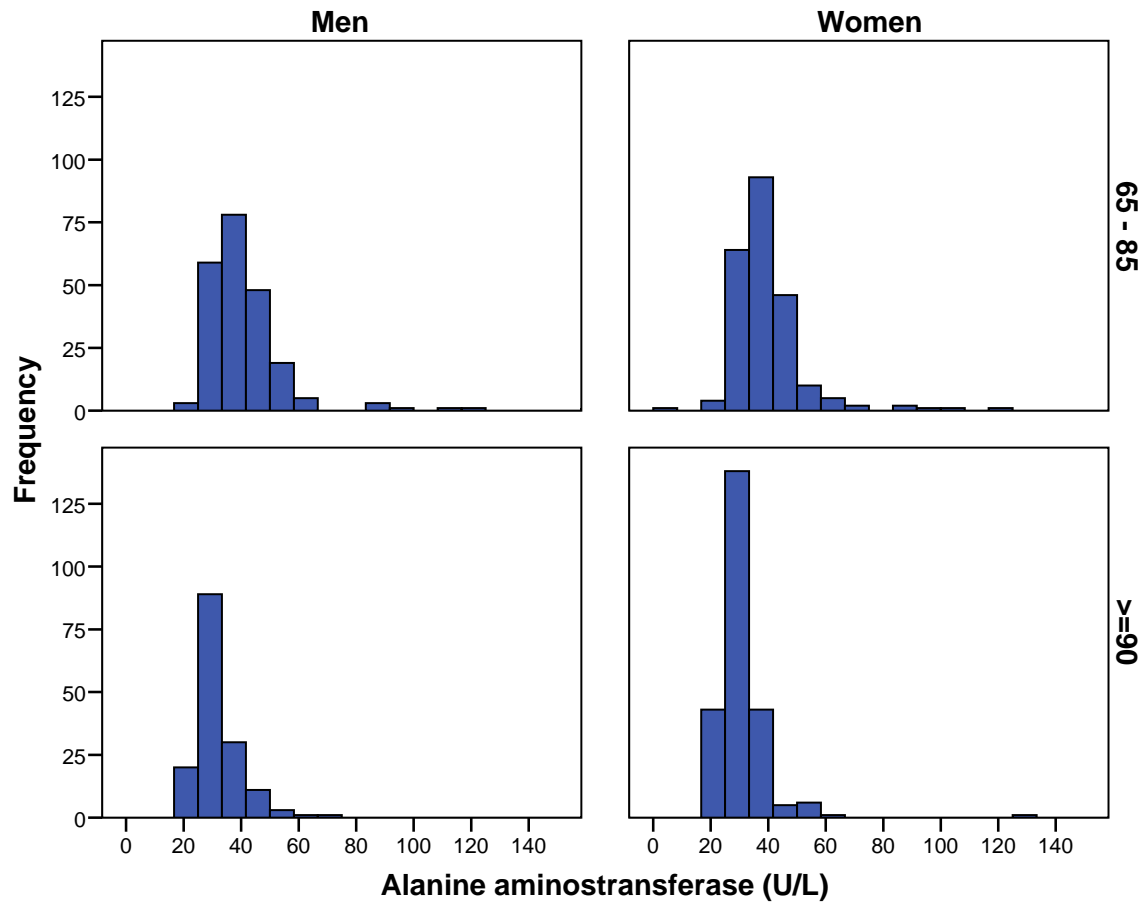


Figure 22: Frequency distribution of the plasma level of alkaline phosphatase by age group and by gender.

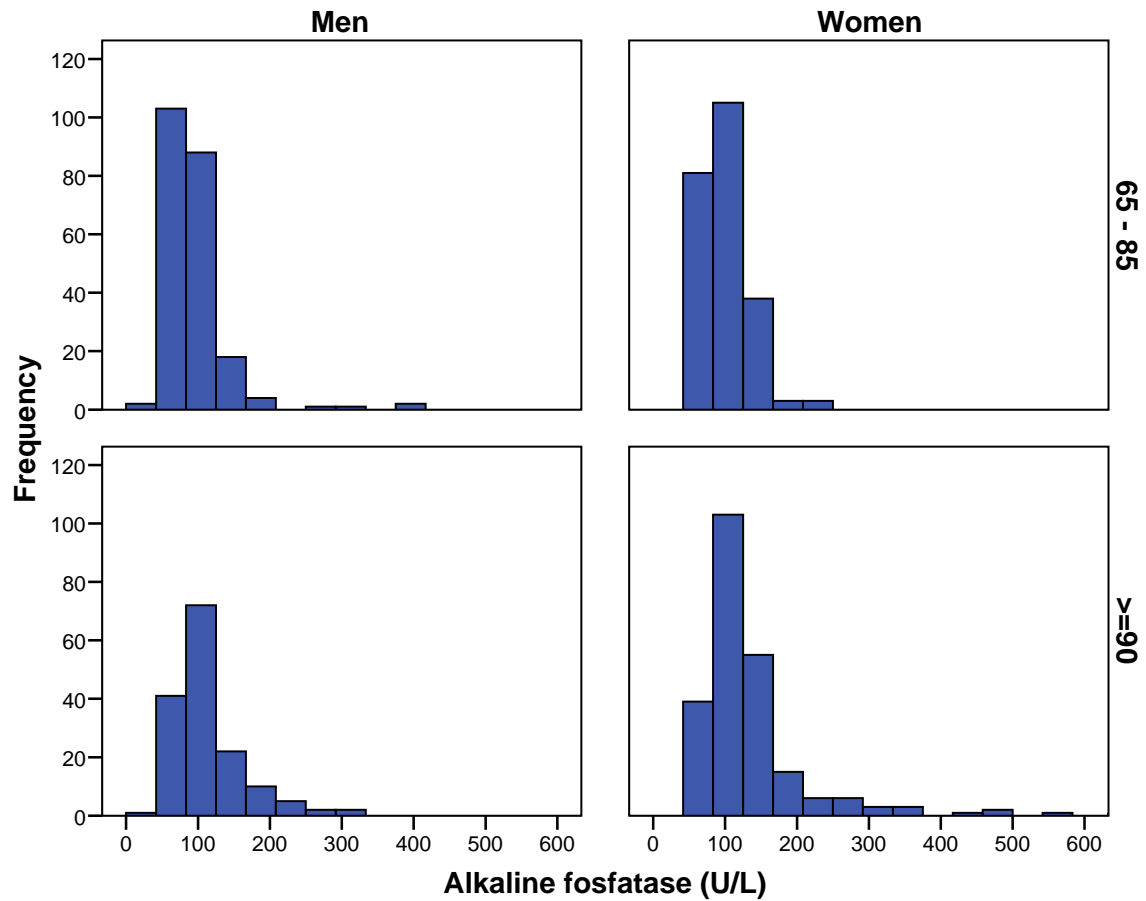


Figure 23: Frequency distribution of the plasma level of Gammaglutamyl transferase by age group and by gender.

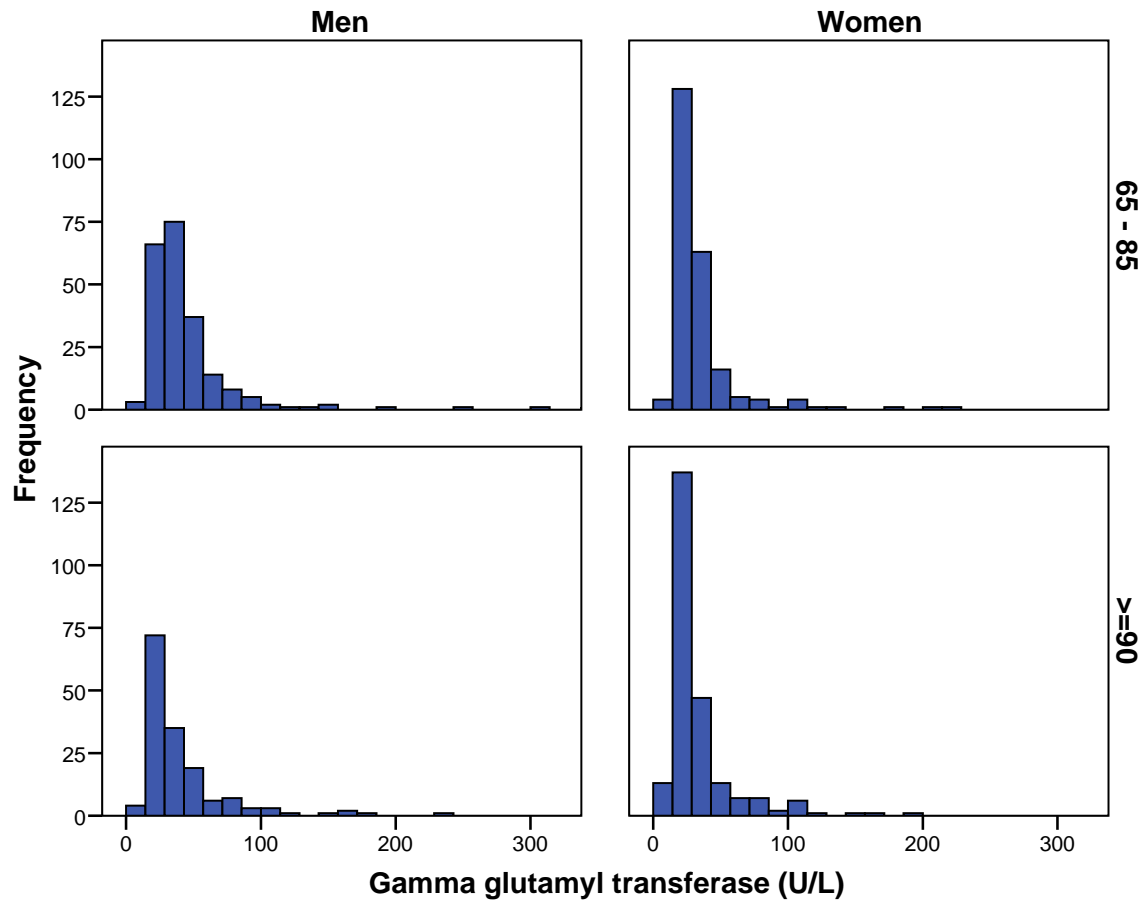


Figure 24: Frequency distribution of the plasma level of total bilirubin by age group and by gender.

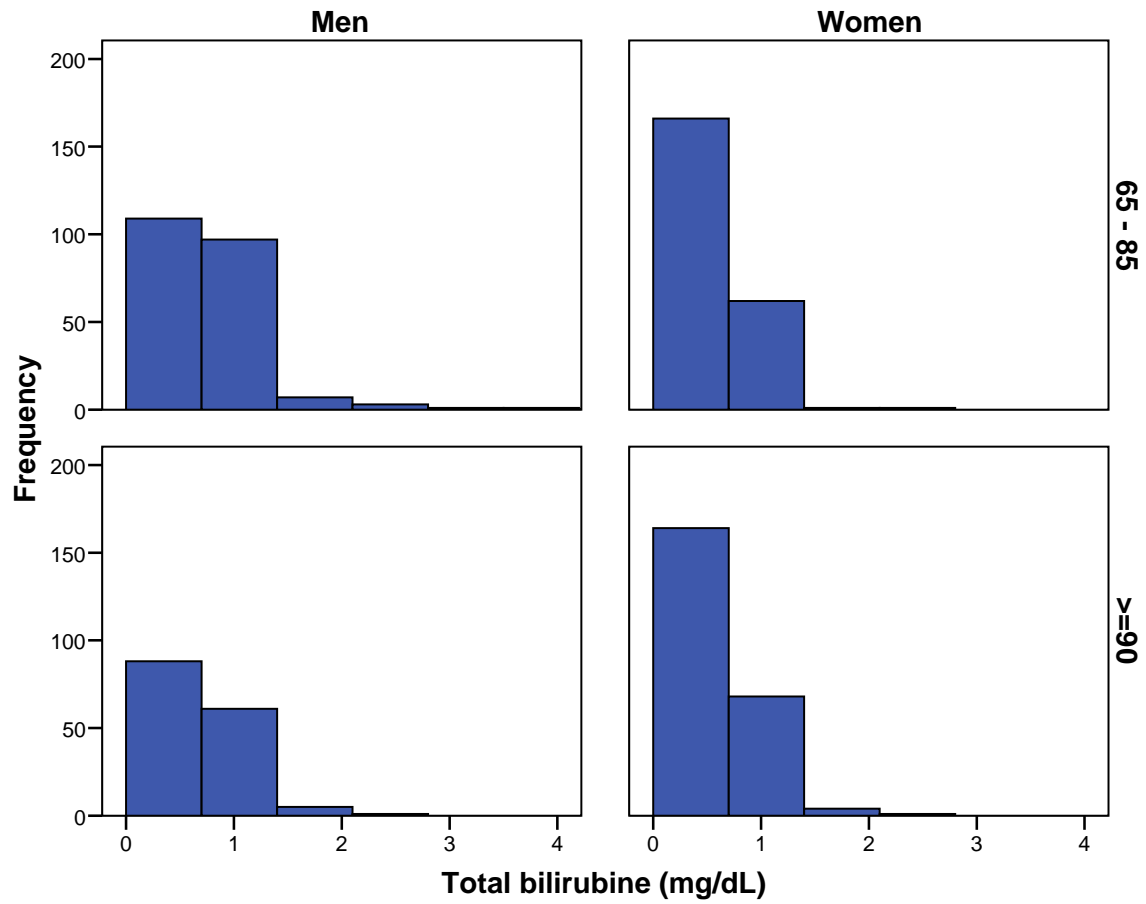


Figure 25: Frequency distribution of the plasma level of direct bilirubin by age group and by gender.

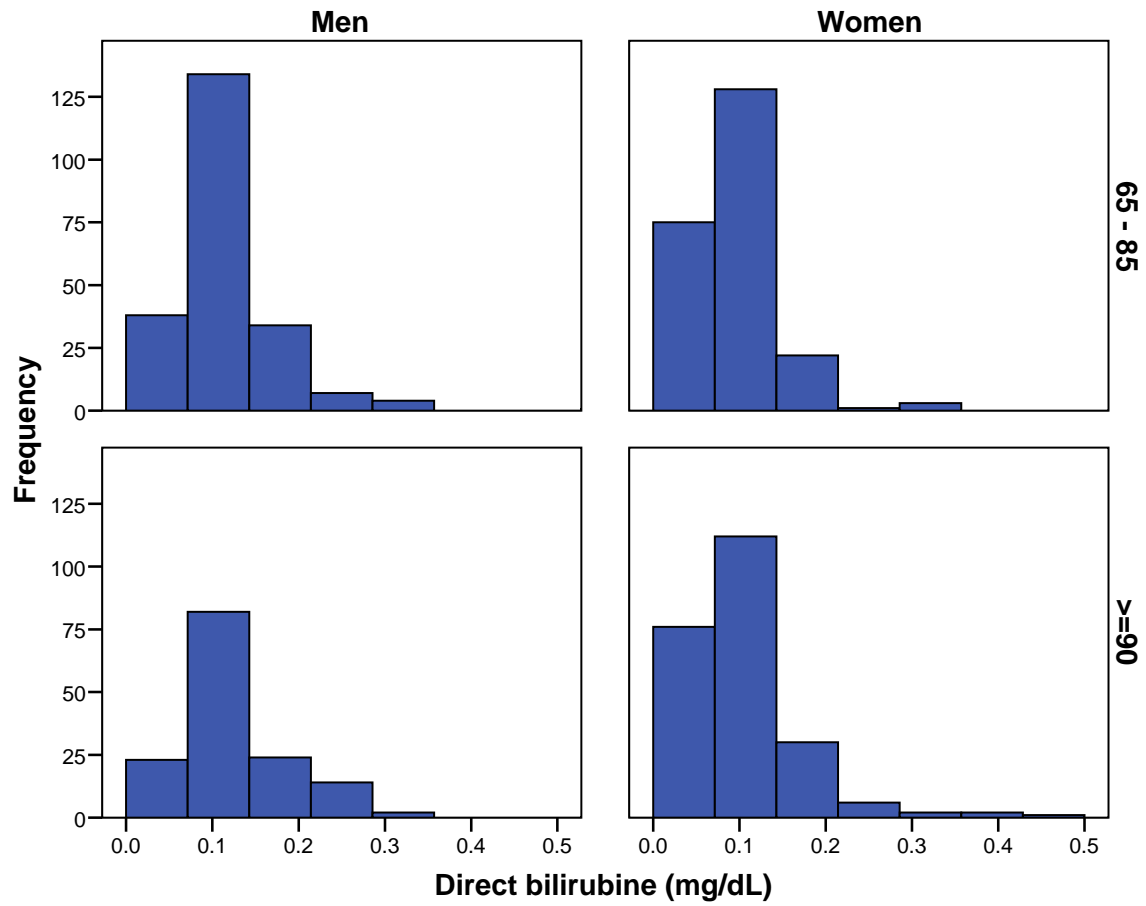


Figure 26: Frequency distribution of the plasma level of indirect bilirubine by age group and by gender.

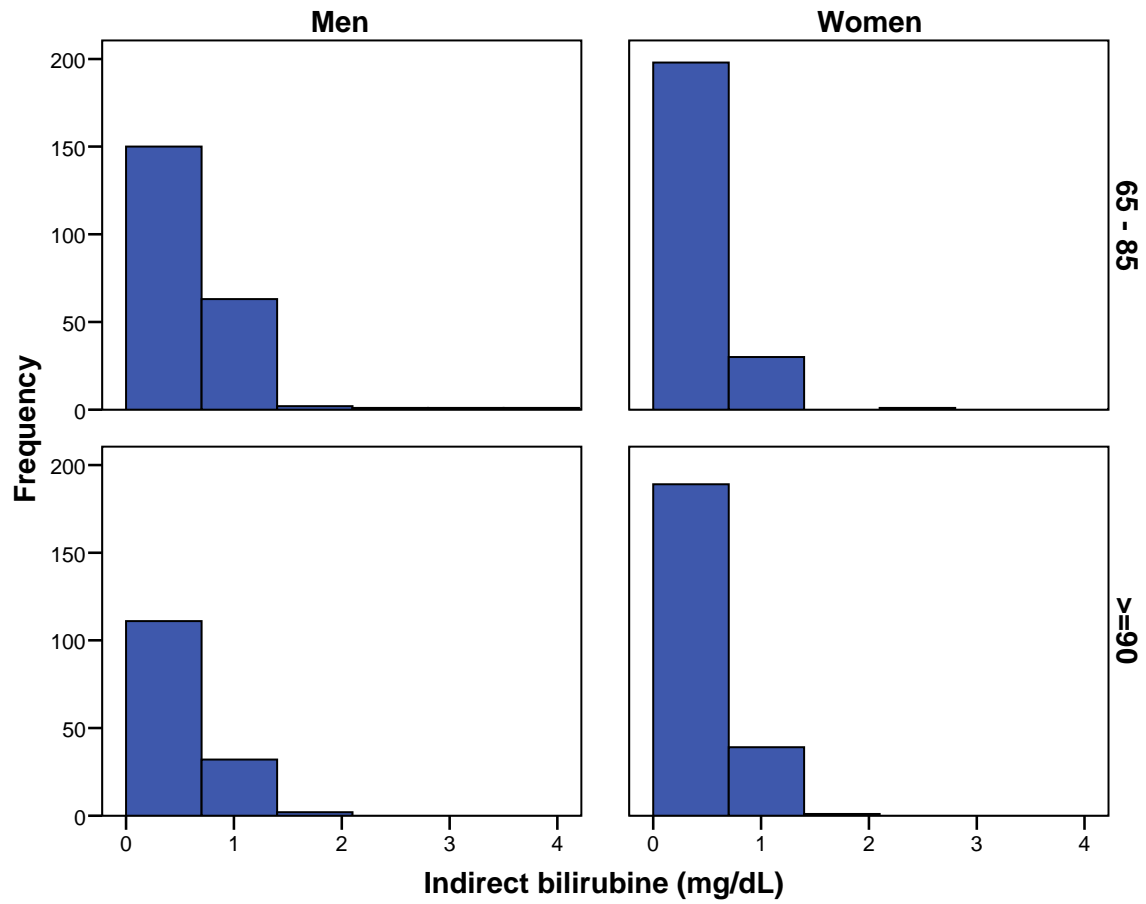


Figure 27: Frequency distribution of the plasma level of total cholesterol by age group and by gender.

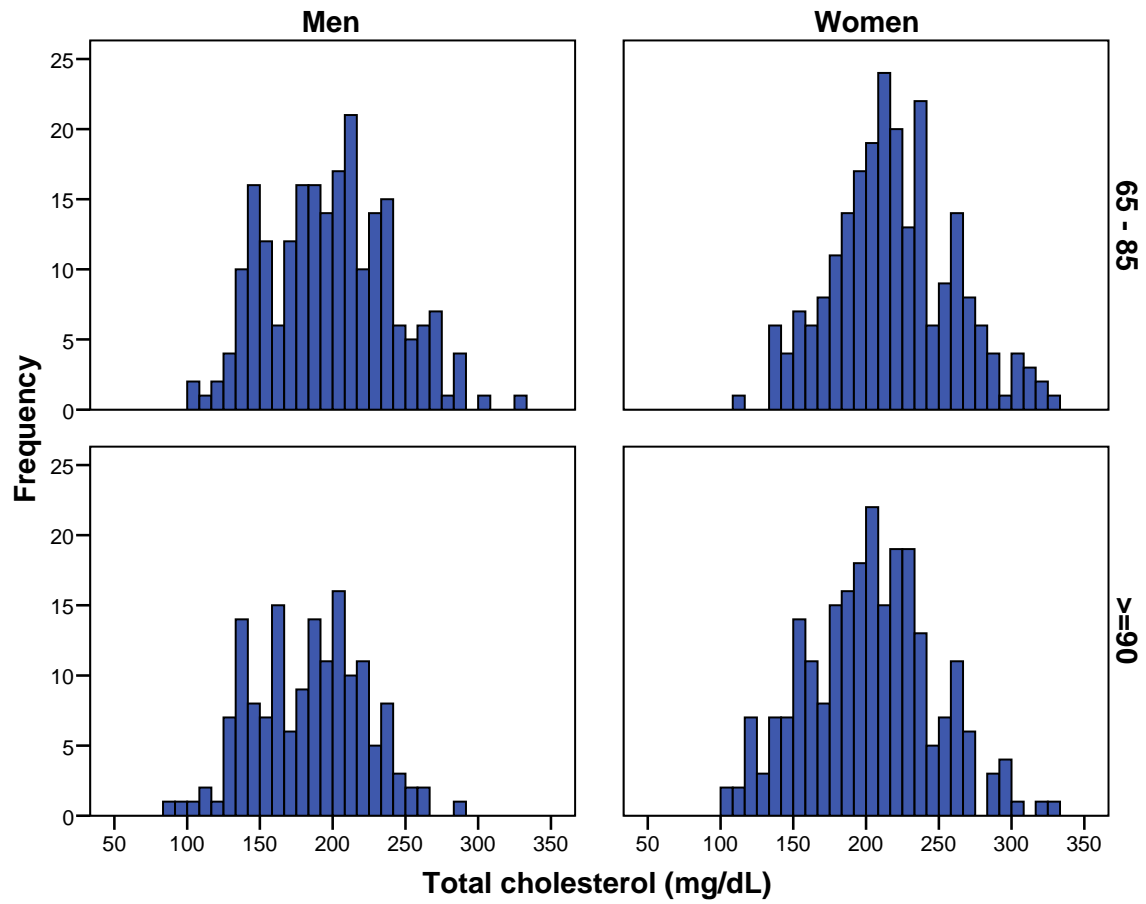


Figure 28: Frequency distribution of the plasma level of tryglicerid by age group and by gender.

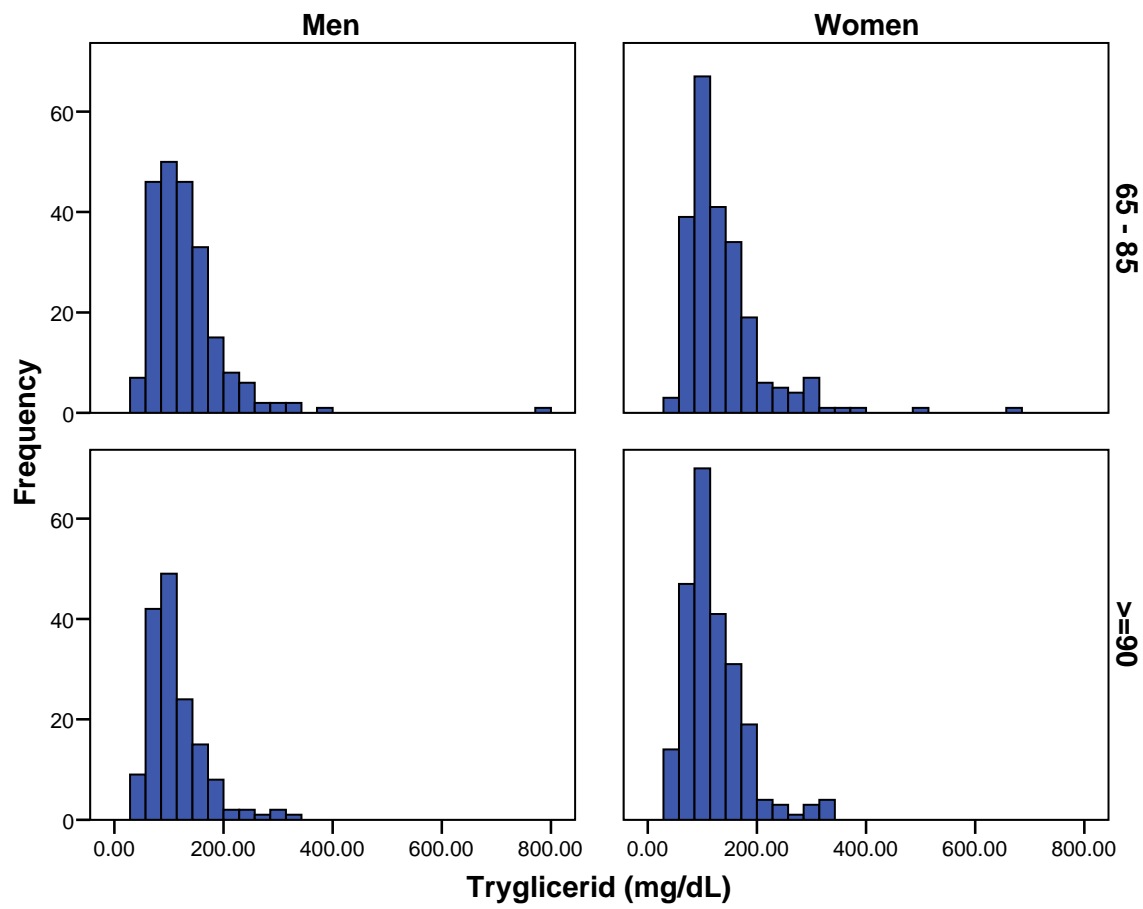


Figure 29: Frequency distribution of the plasma level of HDL cholesterol by age group and by gender.

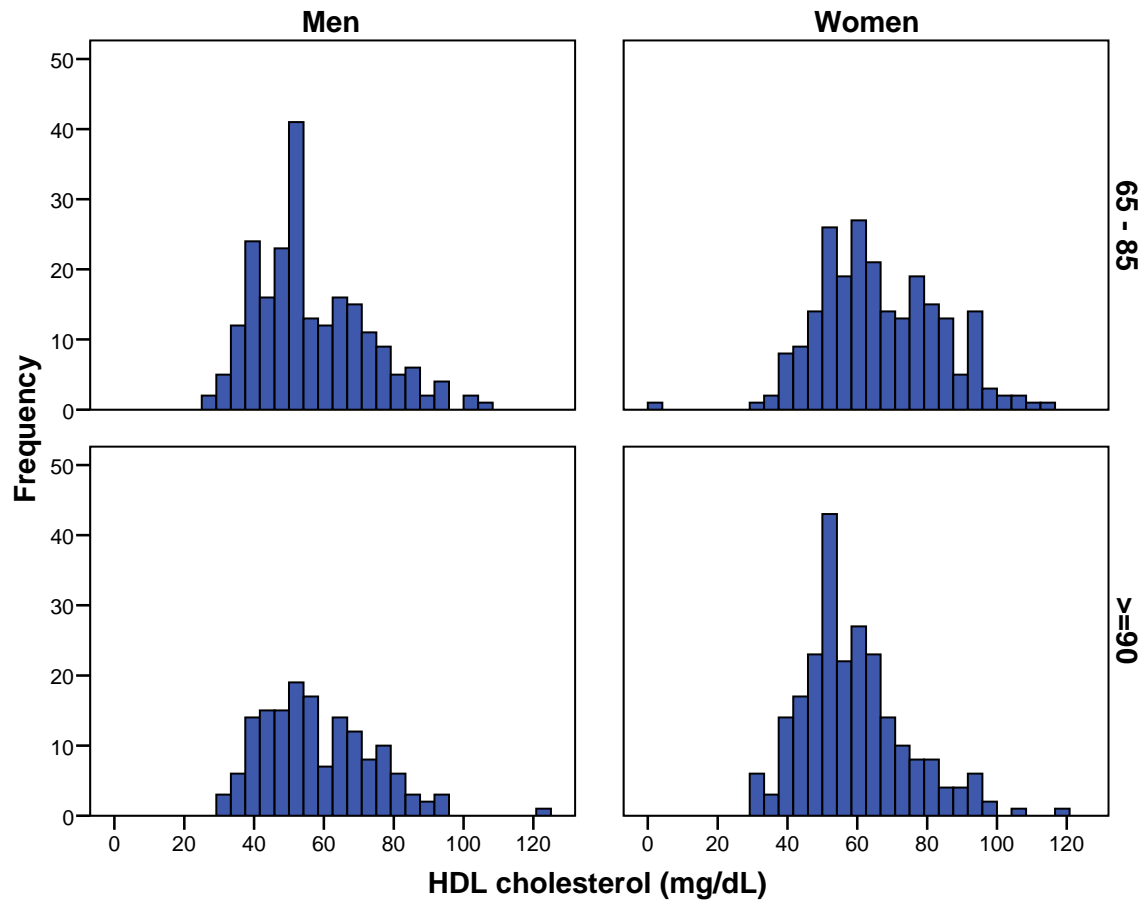


Figure 30: Frequency distribution of the plasma level of LDL cholesterol by age group and by gender.

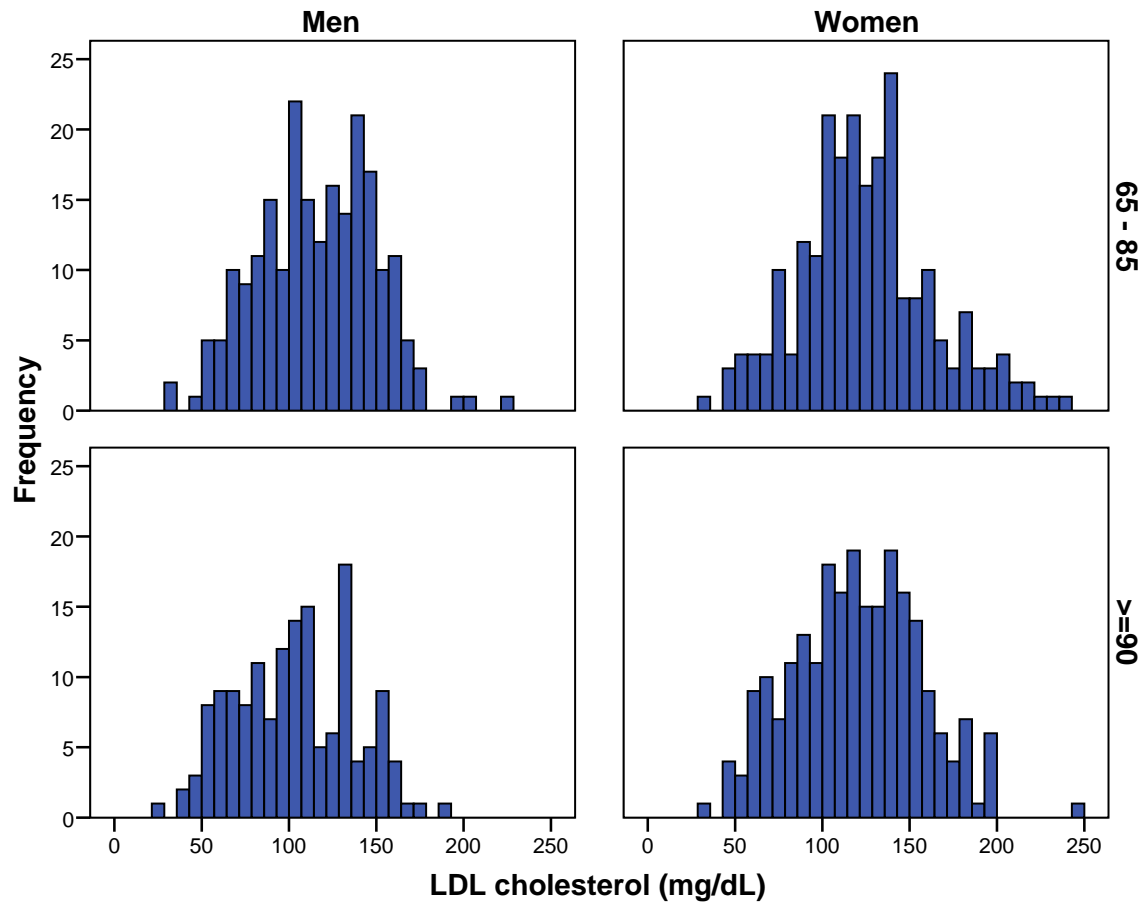


Figure 31: Frequency distribution of the plasma level of iron by age group and by gender.

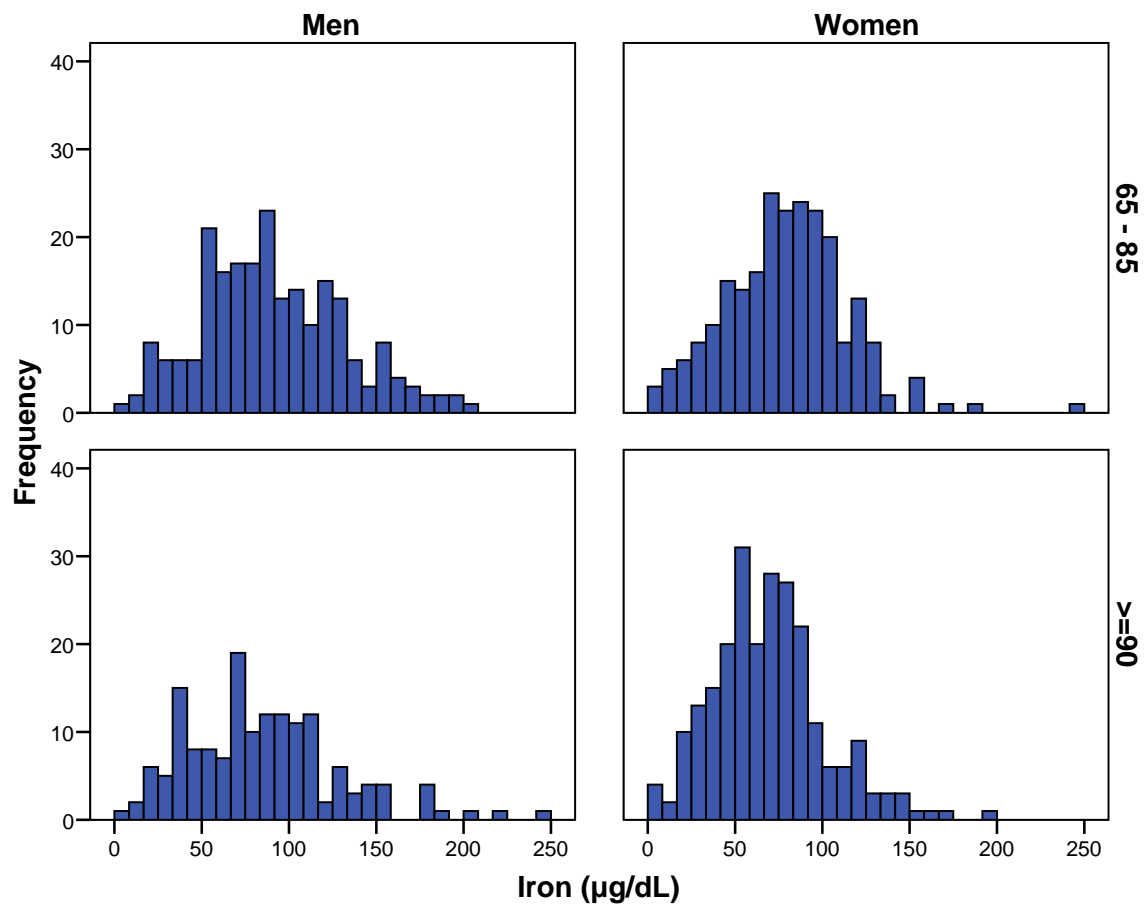


Figure 32: Frequency distribution of the plasma level of ferritin by age group and by gender.

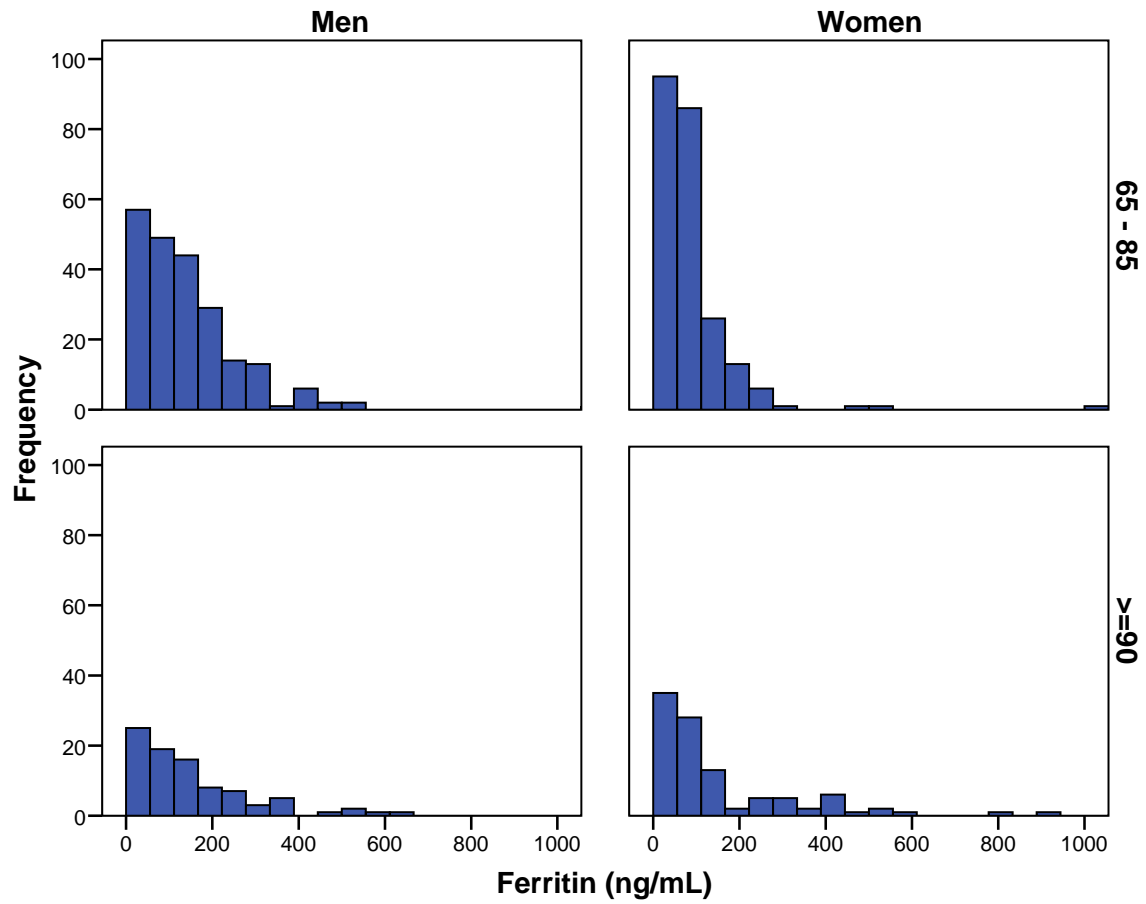


Figure 33: Frequency distribution of the plasma level of total protein by age group and by gender.

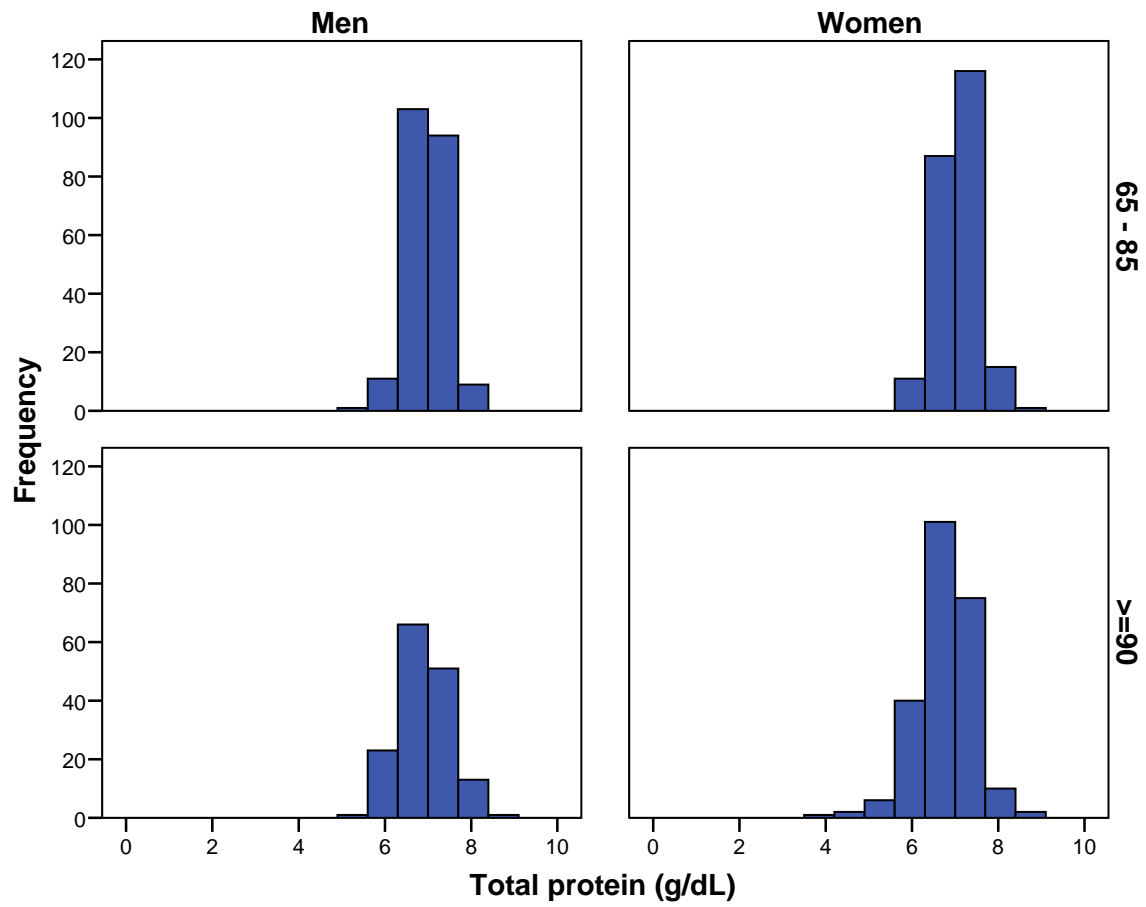


Figure 34: Frequency distribution of the plasma level of albumin by age group and by gender.

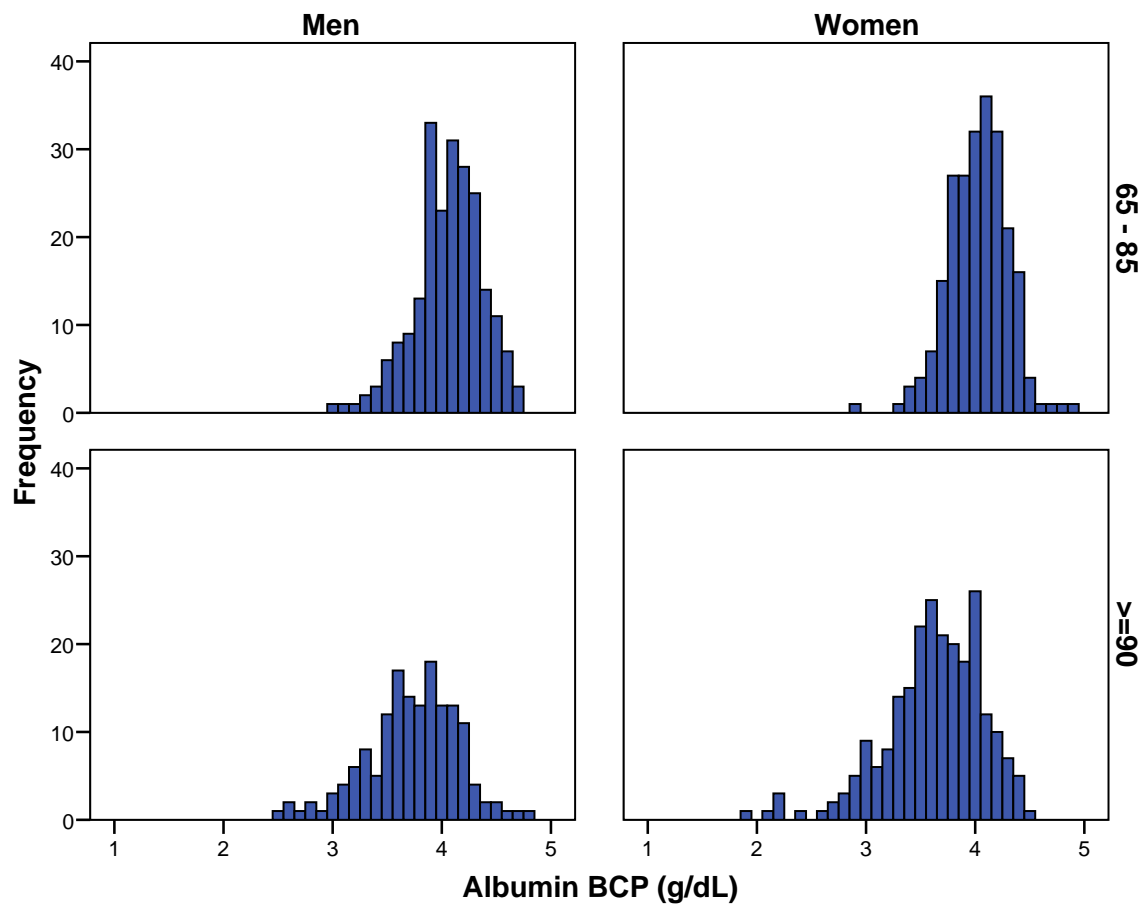


Figure 35: Frequency distribution of the plasma level of C-reactive protein by age group and by gender.

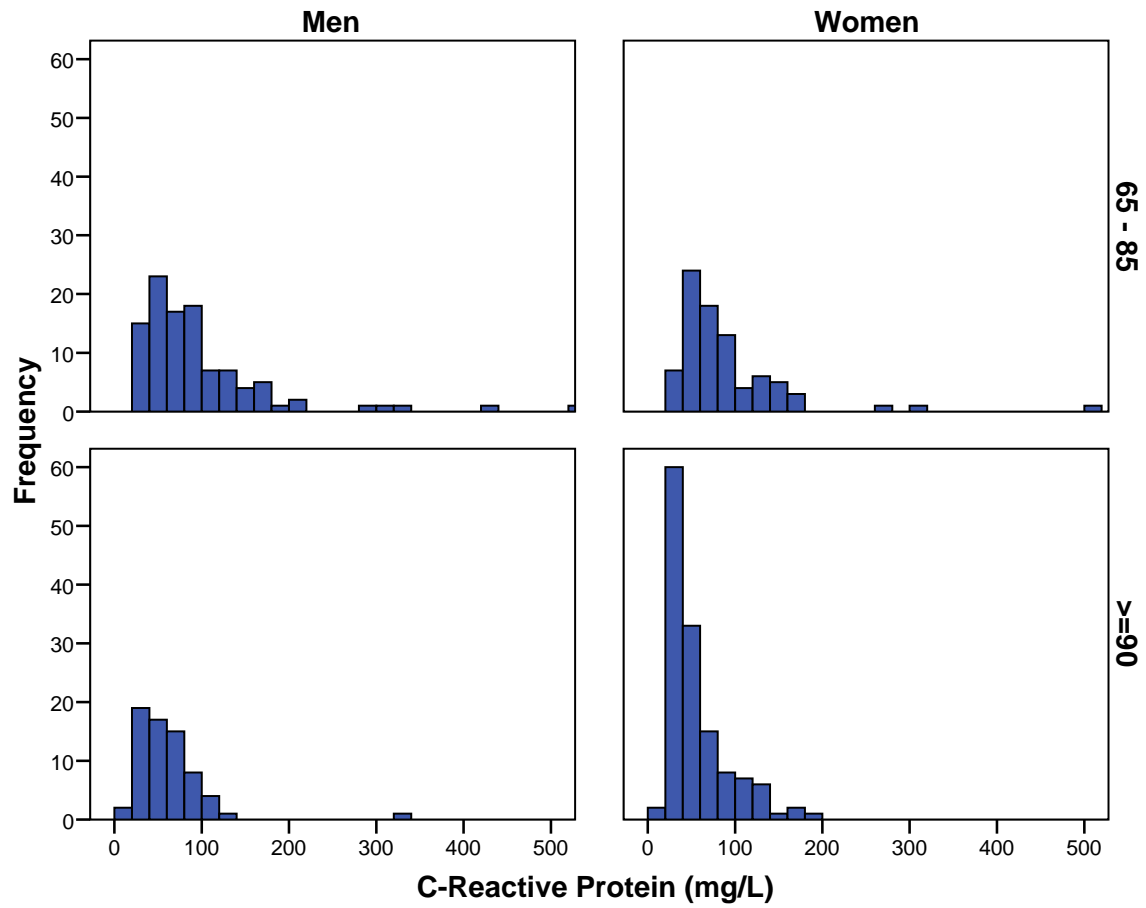


Figure 36: Frequency distribution of the plasma level of thyrotropin by age group and by gender.

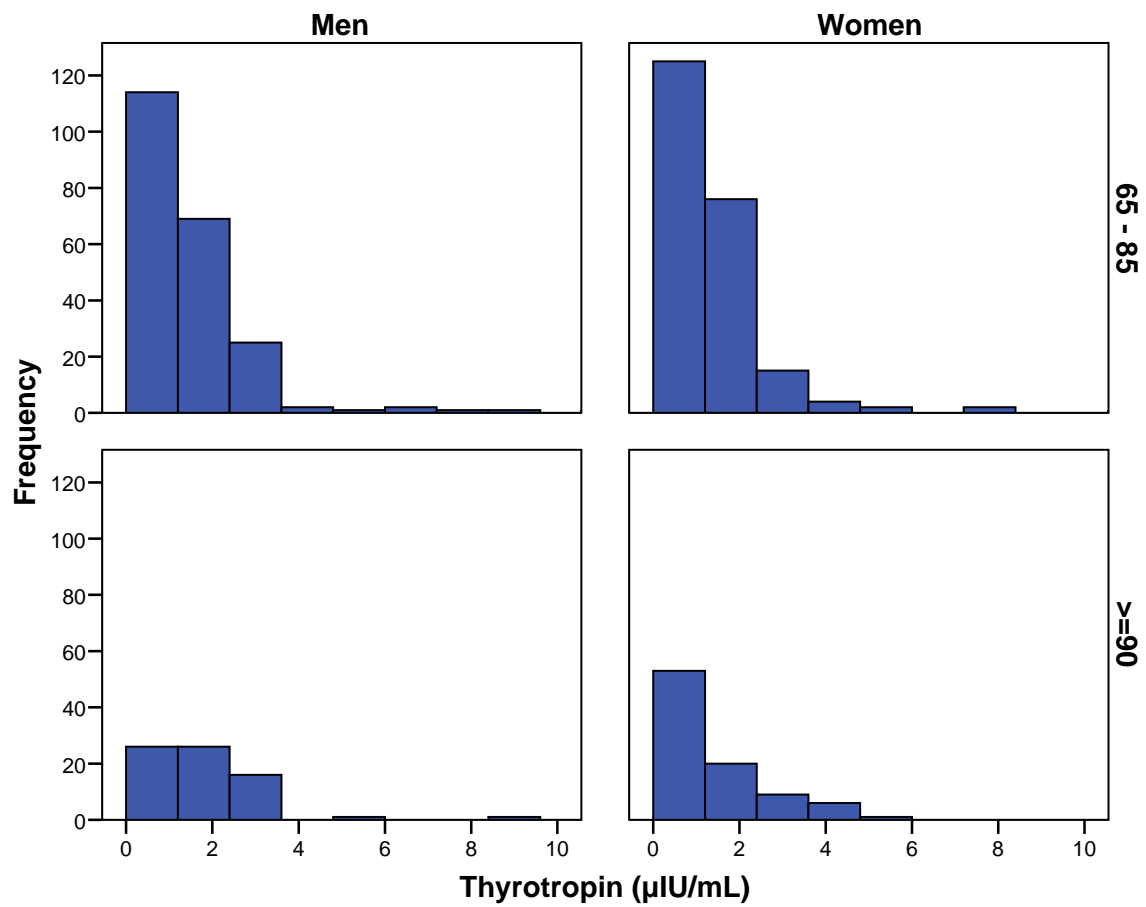


Figure 37: Frequency distribution of the plasma level of thyroxine by age group and by gender.

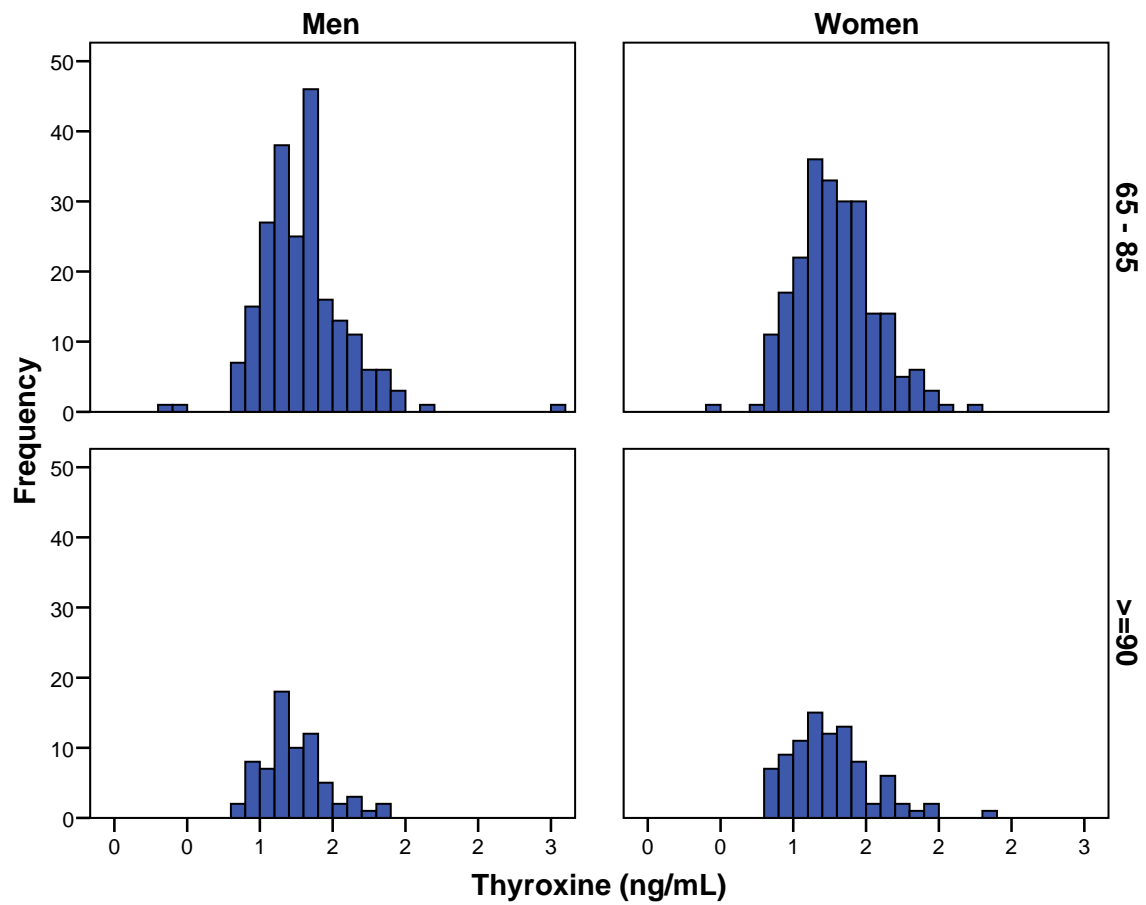


Figure 38: Frequency distribution of the plasma level of triiodothyronine by age group and by gender.

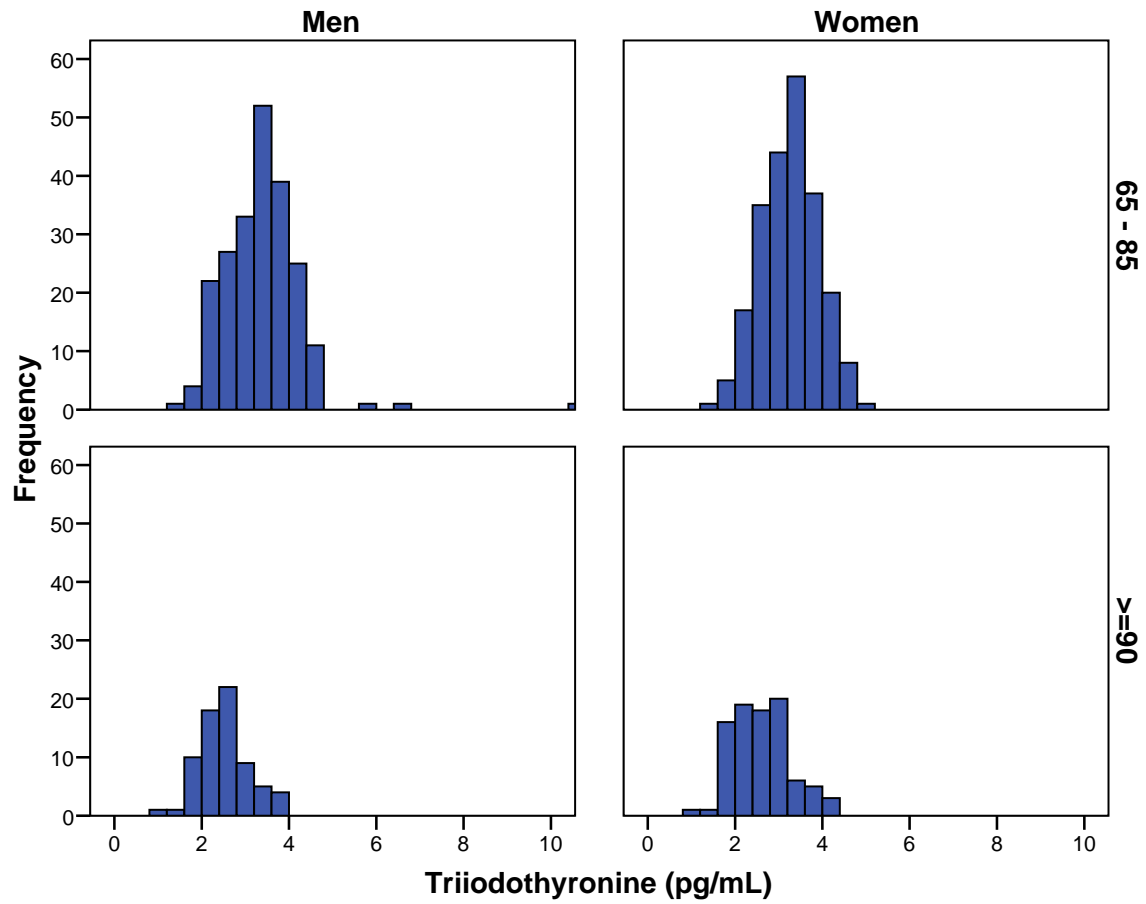


Figure 39: Frequency distribution of the plasma level of alpha 1 separated by electrophoresis by age group and by gender.

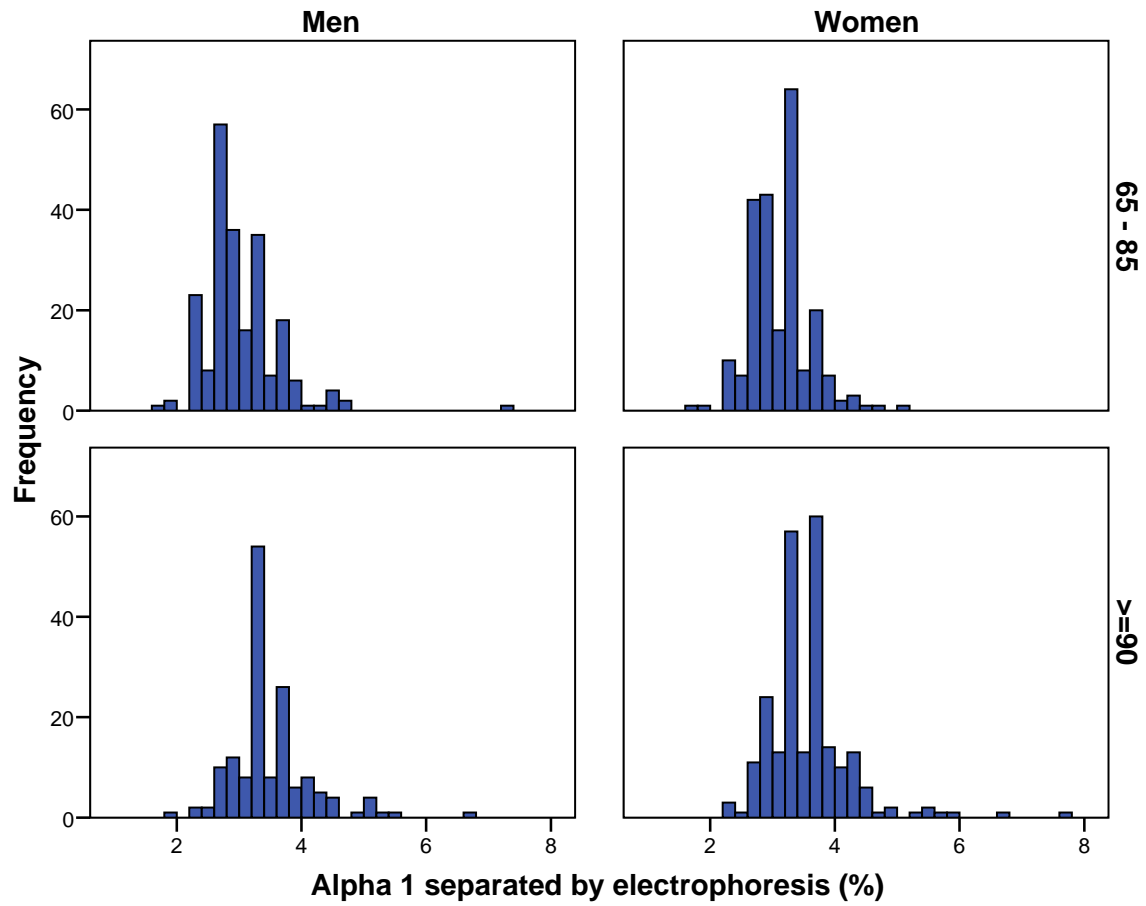


Figure 40: Frequency distribution of the plasma level of Alpha 2 separated by electrophoresis by age group and by gender.

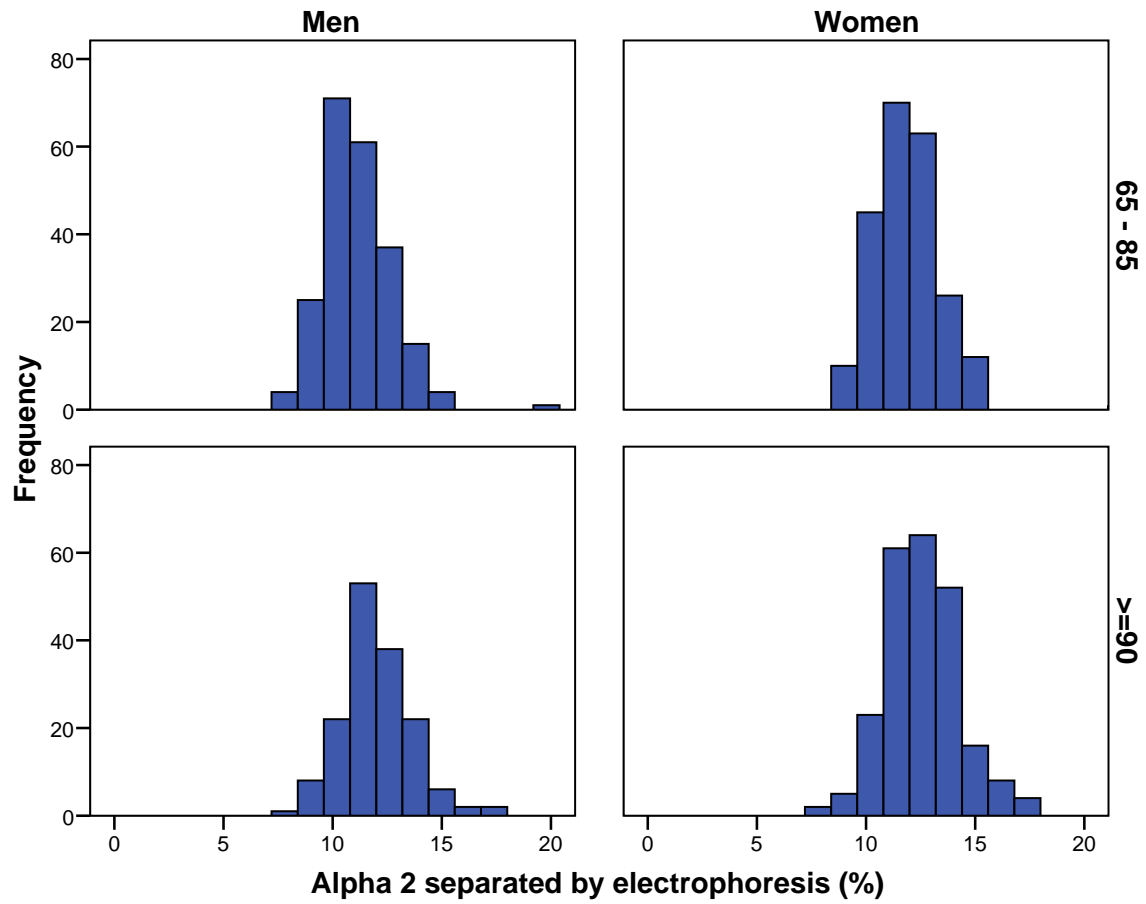


Figure 41: Frequency distribution of the plasma level of beta separated by electrophoresis by age group and by gender.

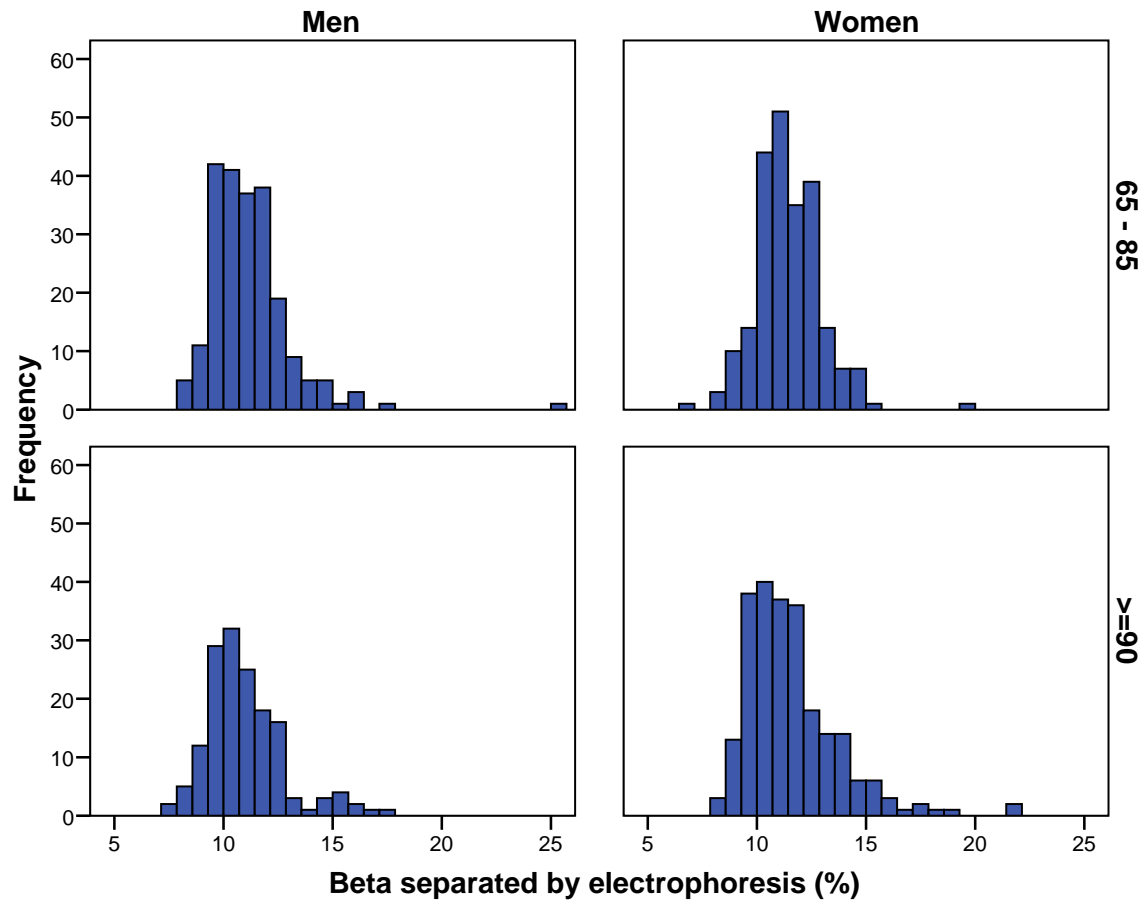


Figure 42: Frequency distribution of the plasma level of gamma separated by electrophoresis by age group and by gender.

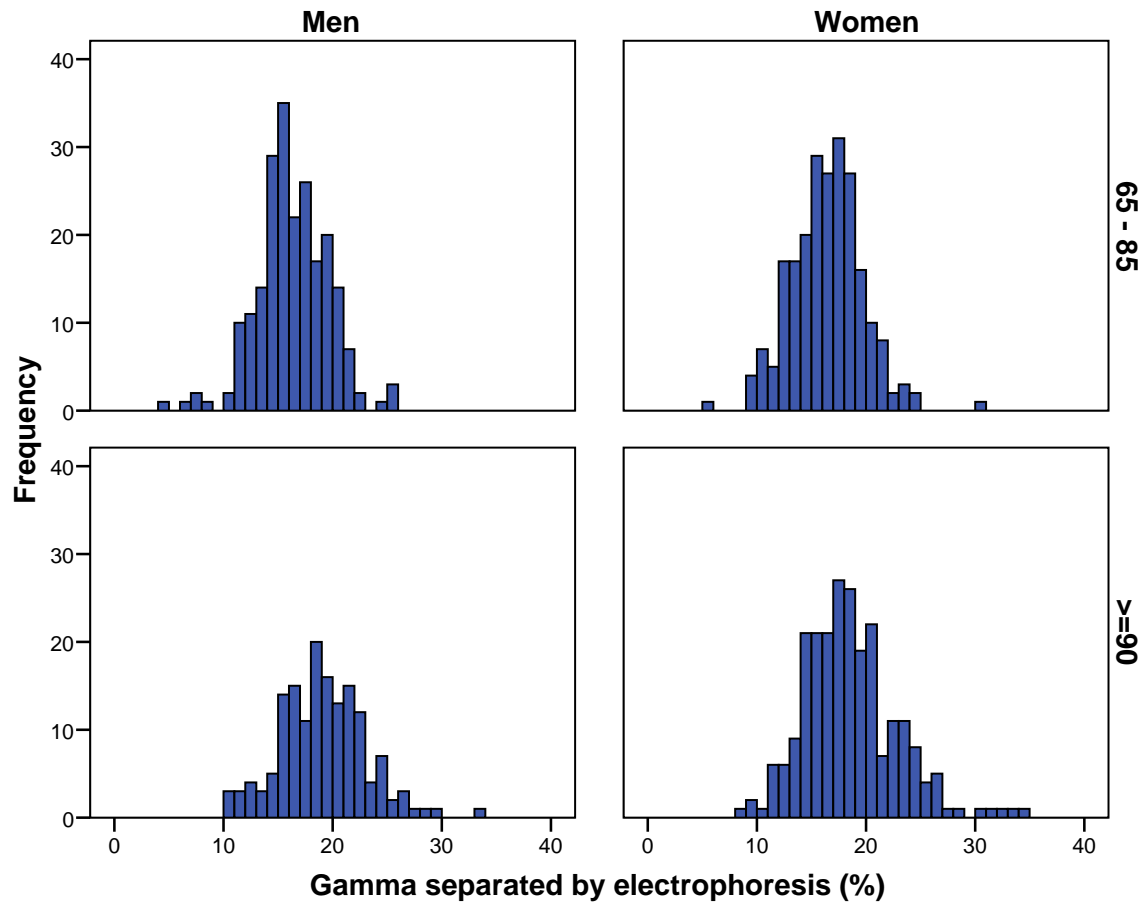


Figure 43: Frequency distribution of the leukocytes white blood cell count by age group and by gender.

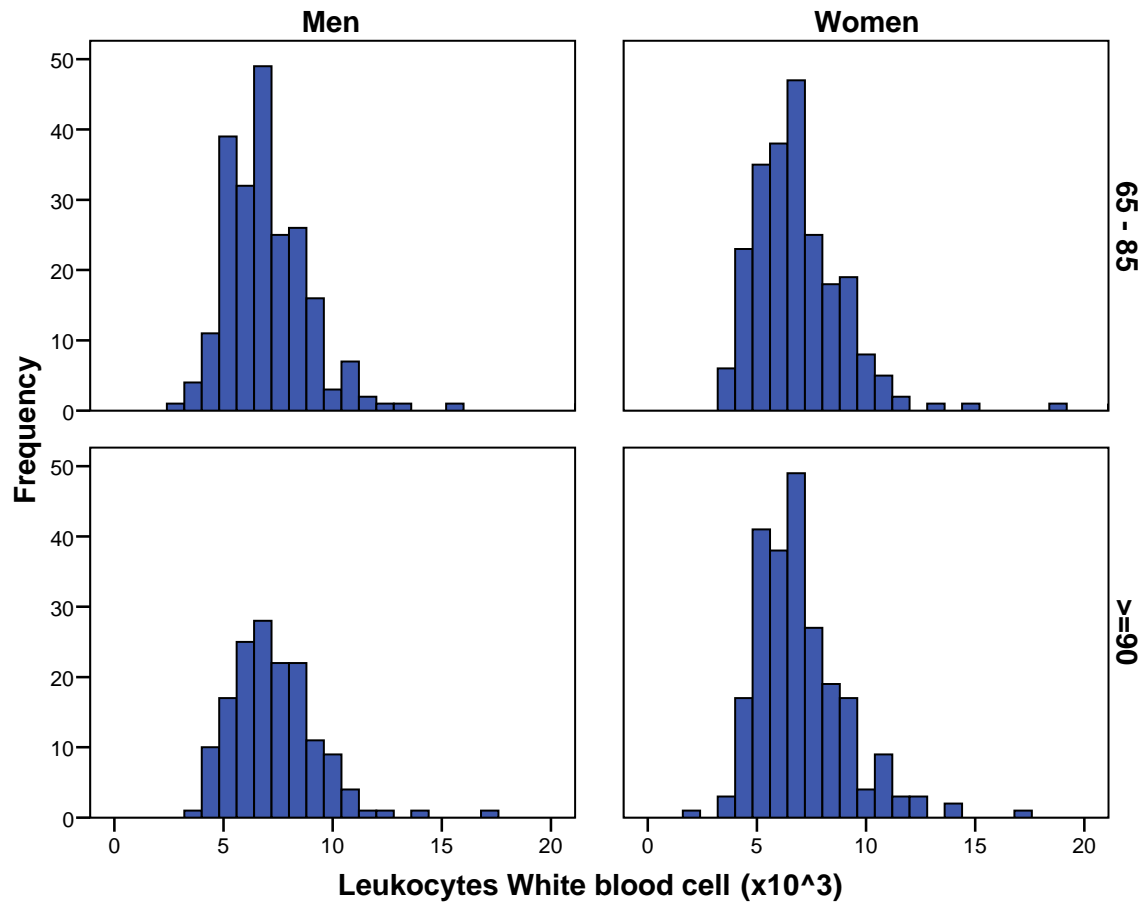


Figure 44: Frequency distribution of the erythrocytes red blood cell count by age group and by gender.

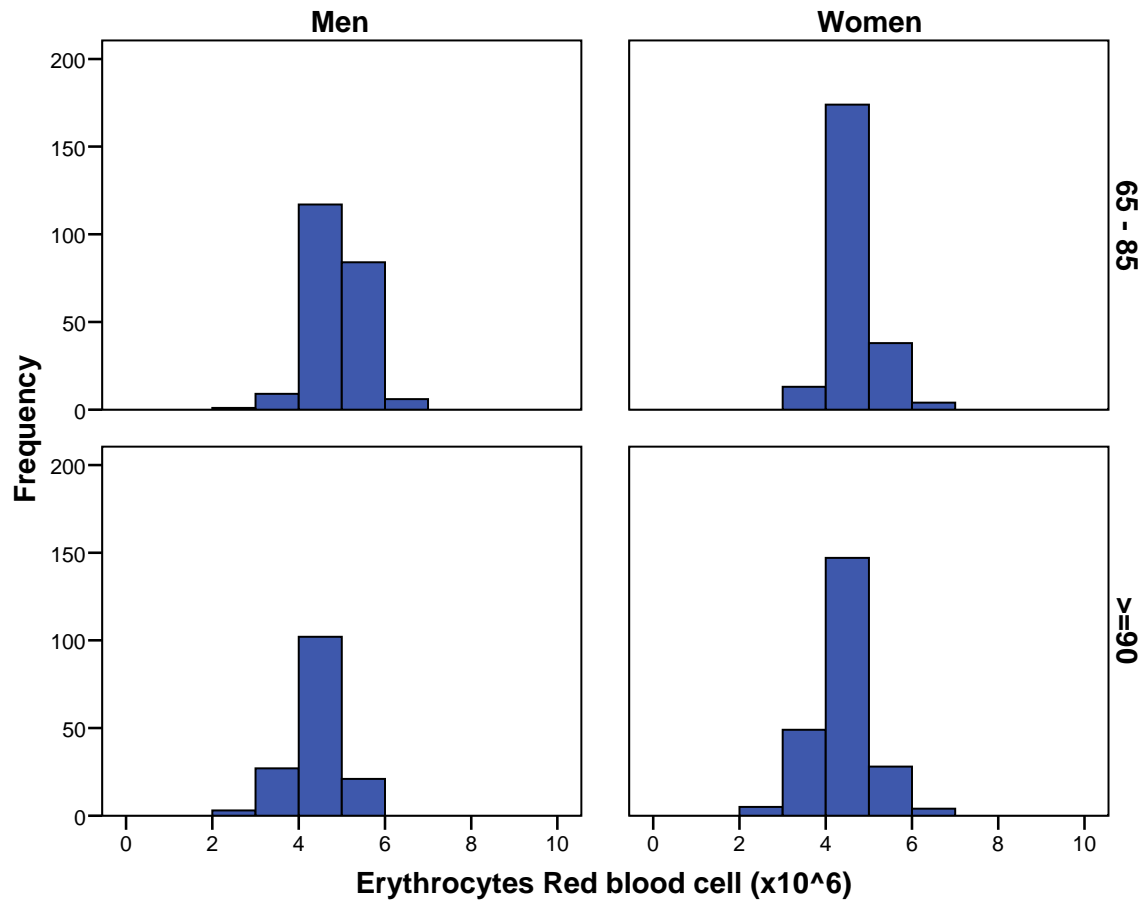


Figure 45: Frequency distribution of the plasma level of hemoglobin by age group and by gender.

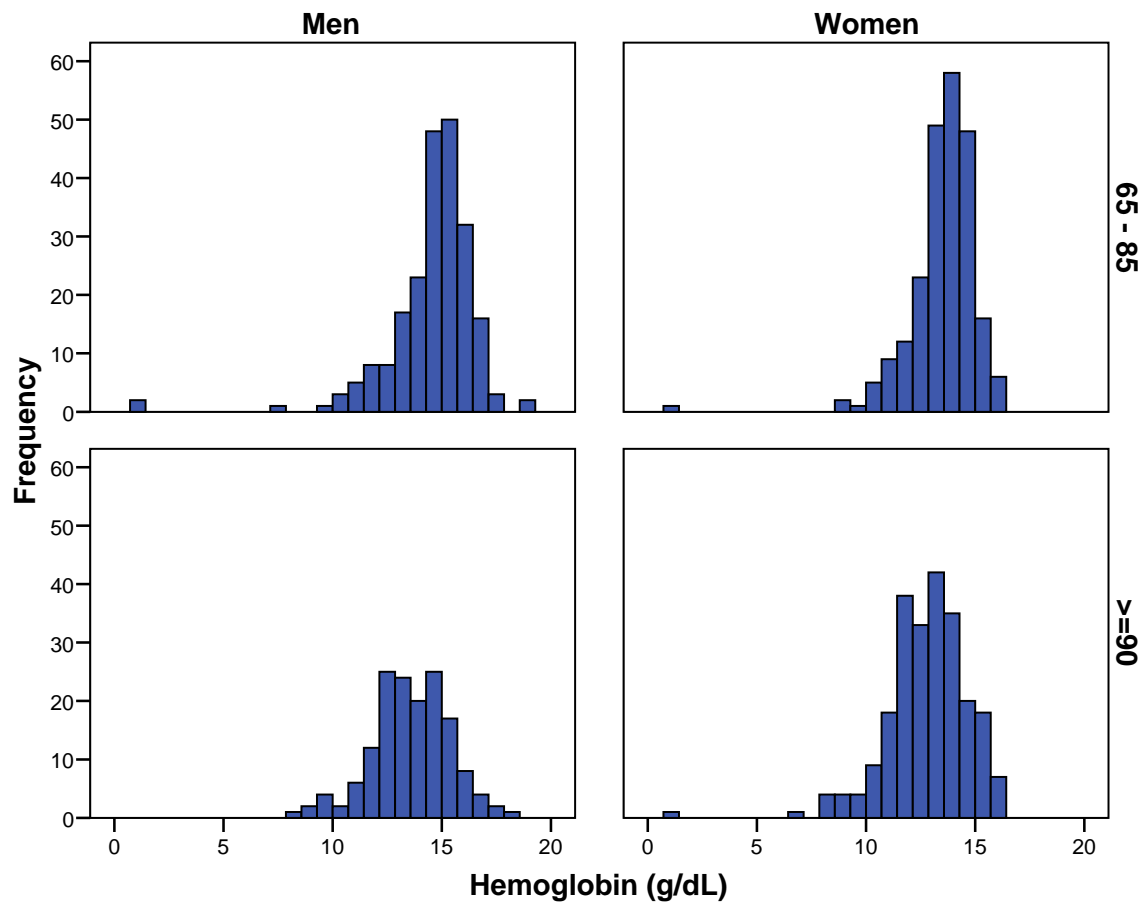


Figure 46: Frequency distribution of the plasma level of hematocrit by age group and by gender.

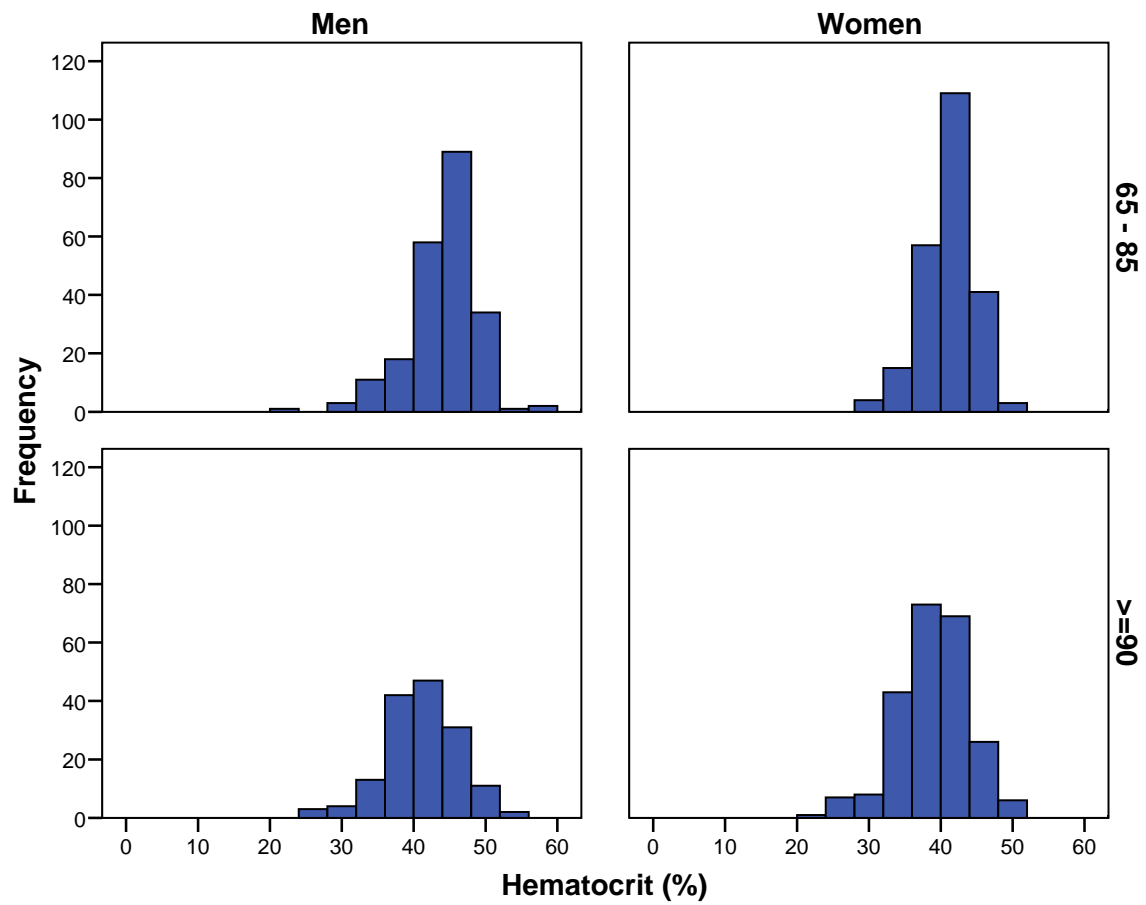


Figure 47: Frequency distribution of the plasma level of mean corpuscular volume by age group and by gender.

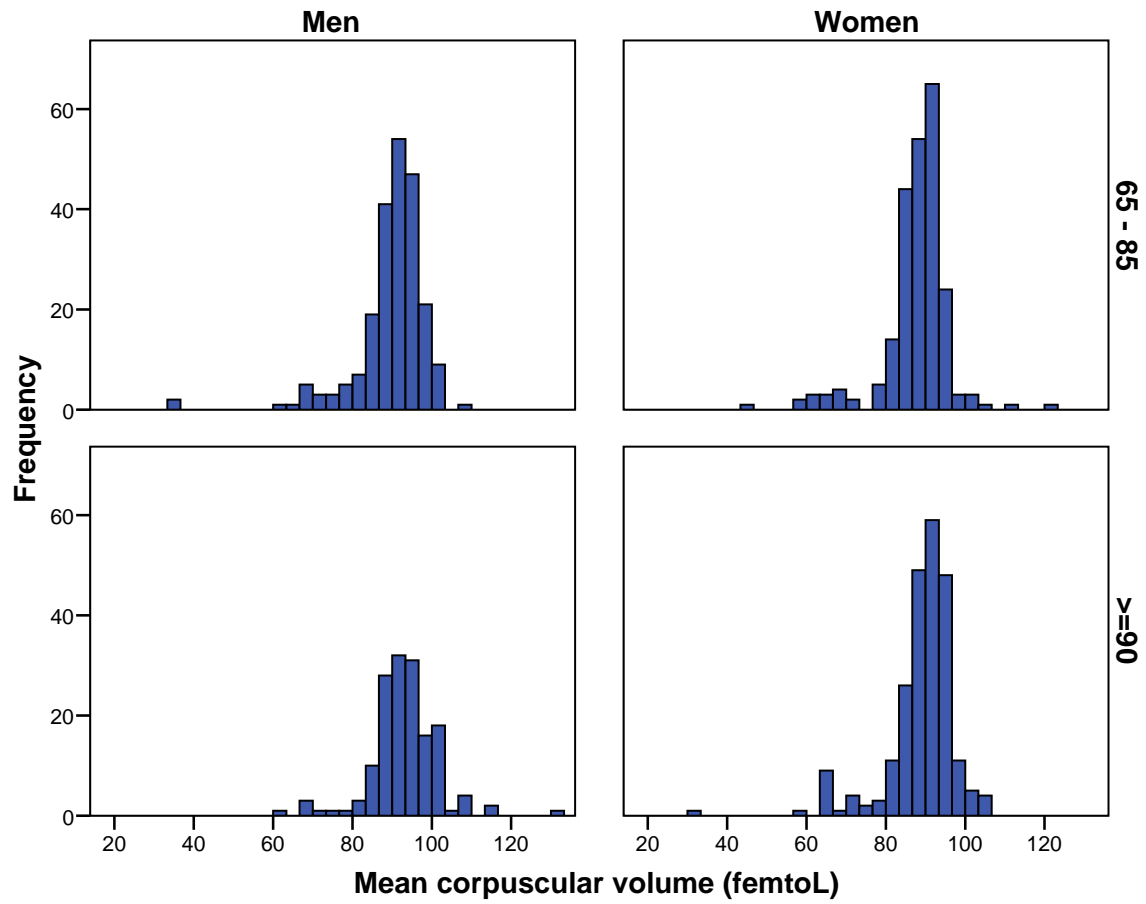


Figure 48: Frequency distribution of the plasma level of mean corpuscular hemoglobin by age group and by gender.

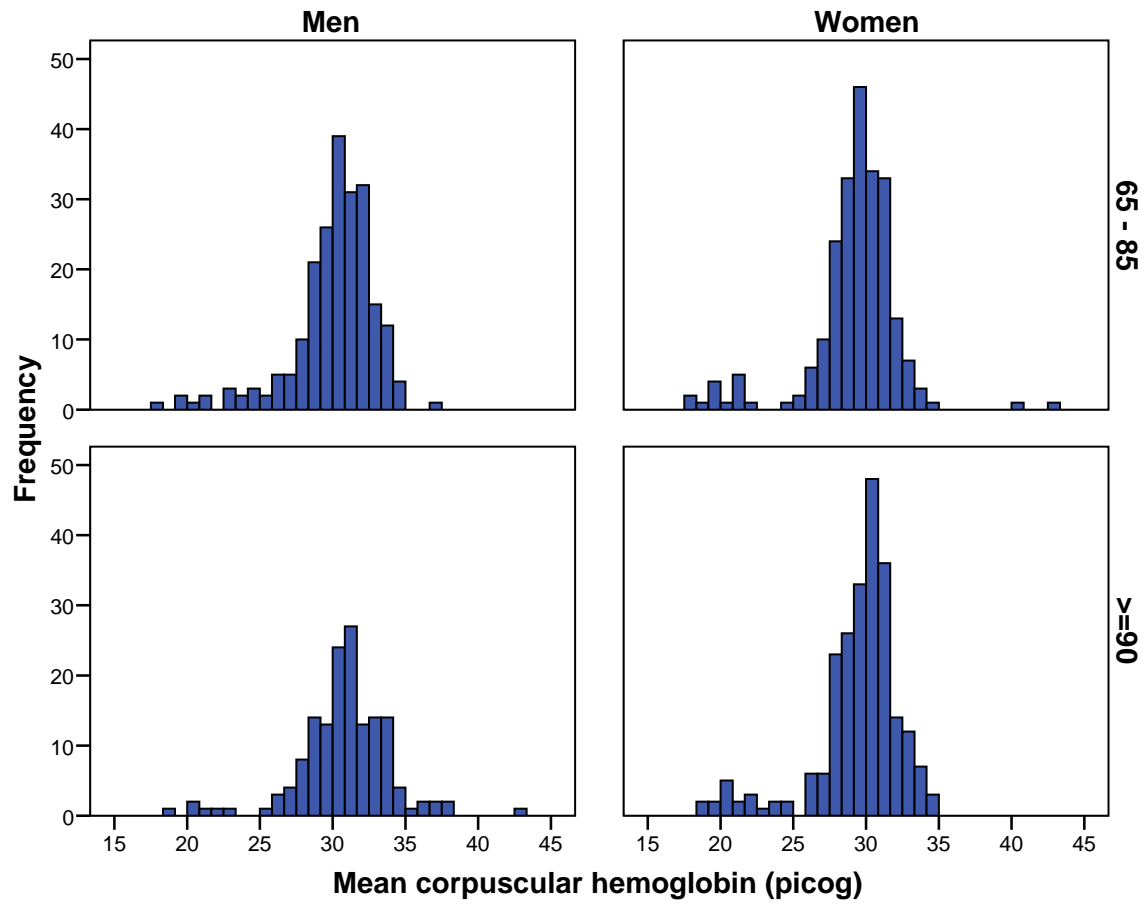


Figure 49: Frequency distribution of the plasma level of mean corpuscular hemoglobin concentration by age group and by gender.

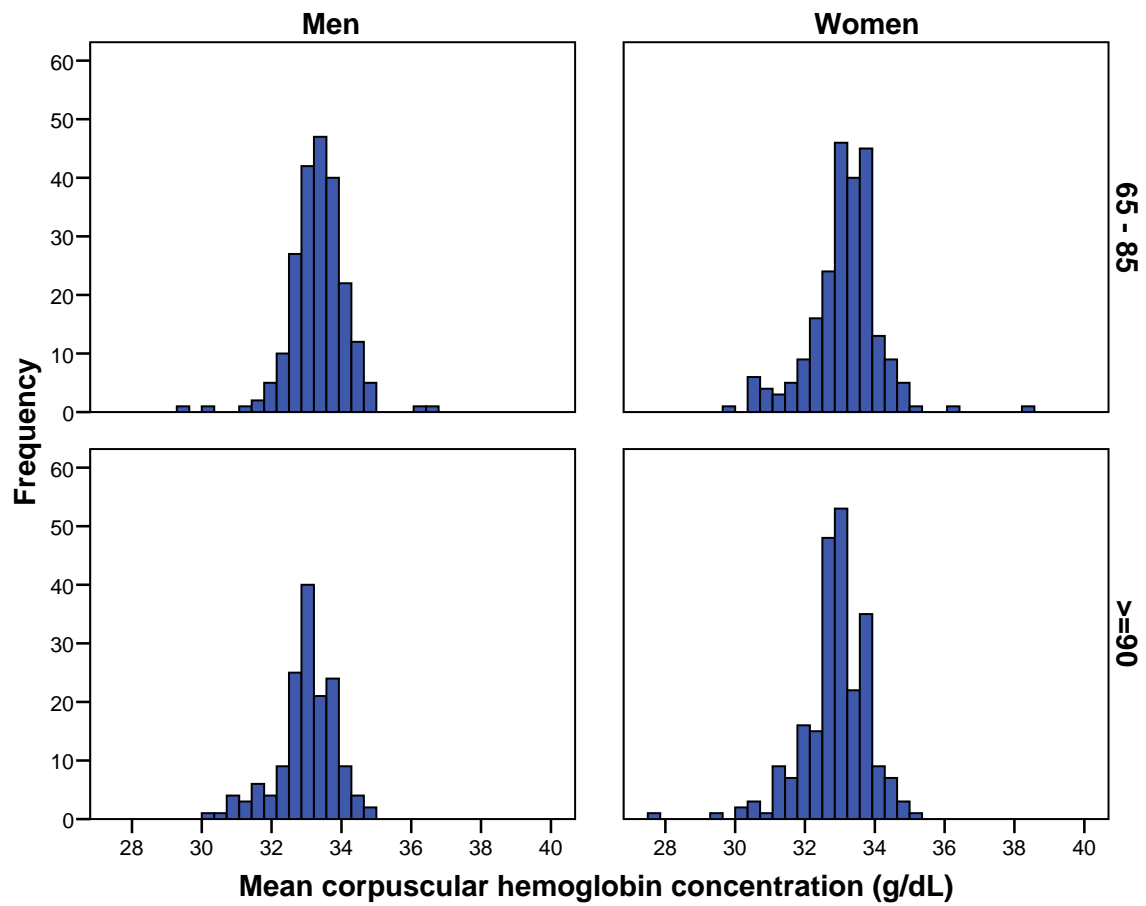


Figure 50: Frequency distribution of red blood cell distribution width count by age group and by gender.

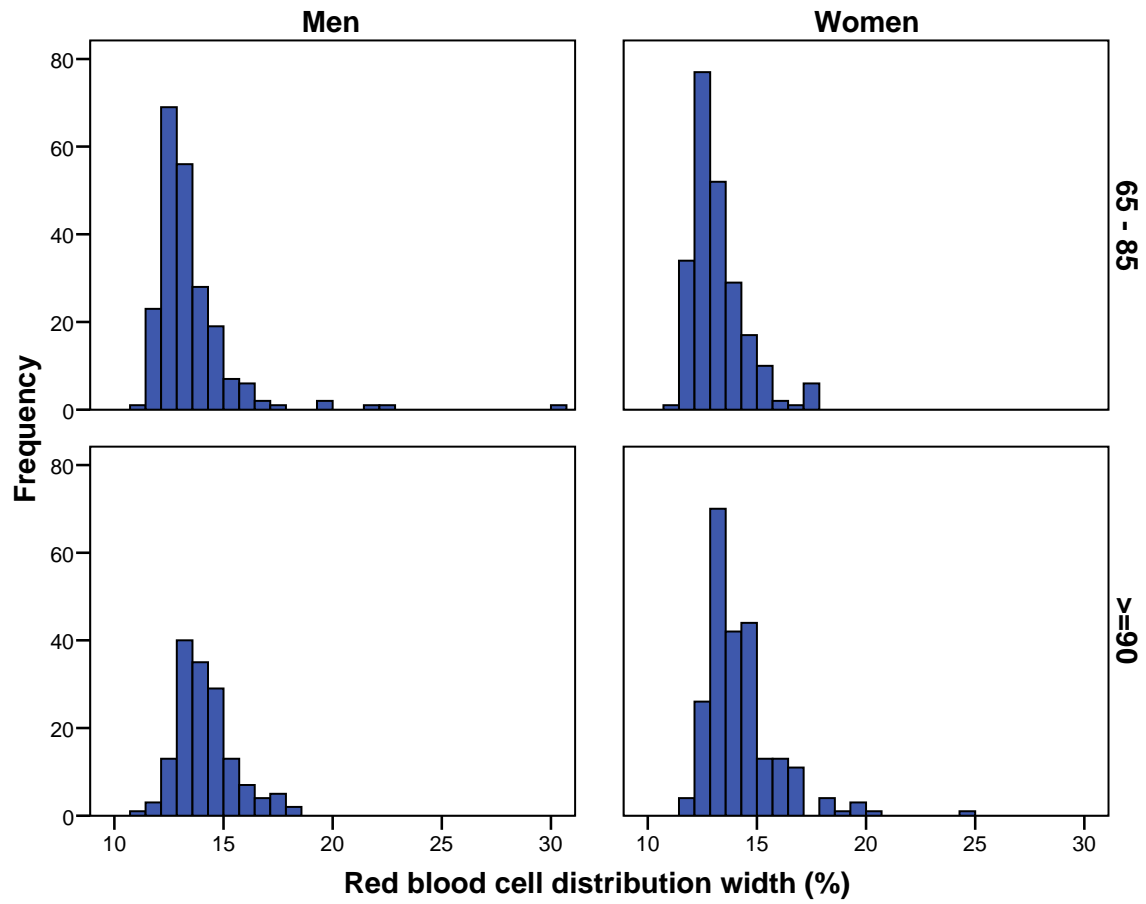


Figure 51: Frequency distribution of platelet count by age group and by gender.

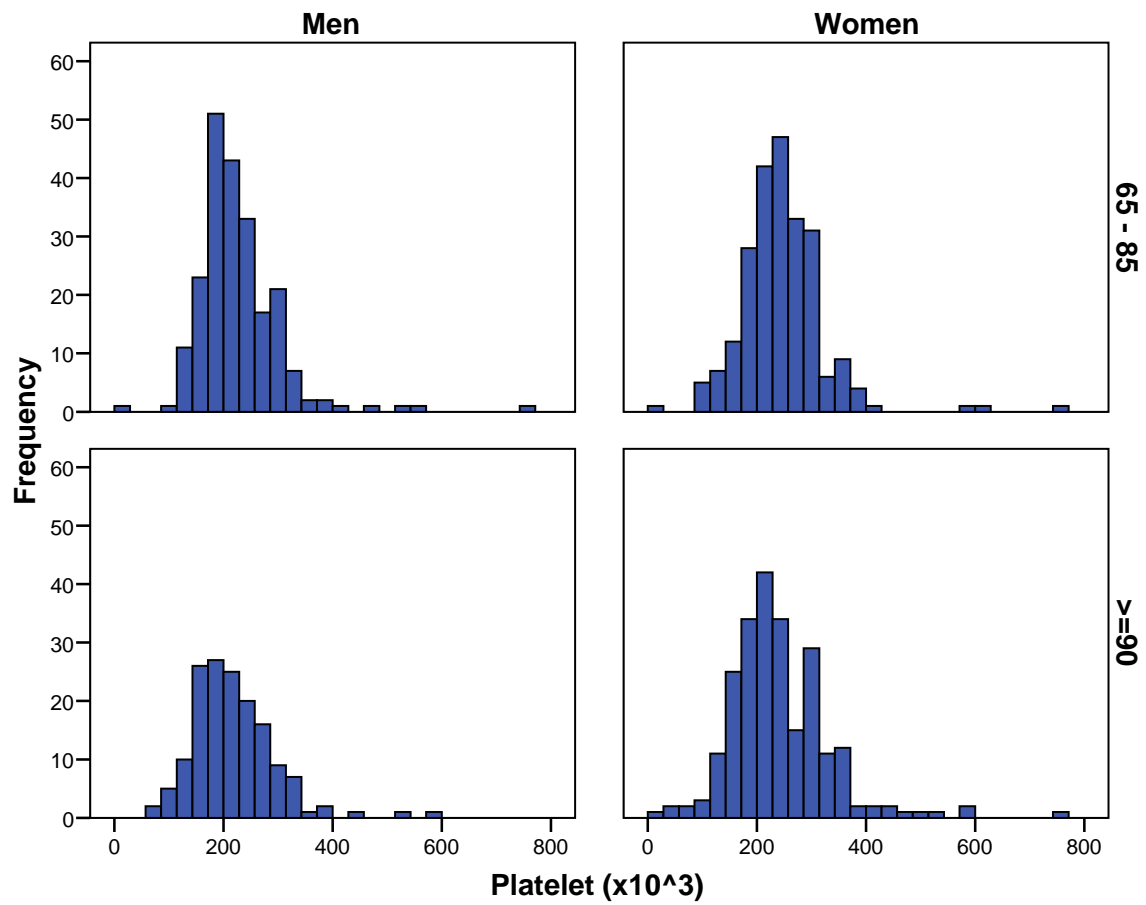


Figure 52: Frequency distribution of mean platelet volume by age group and by gender.

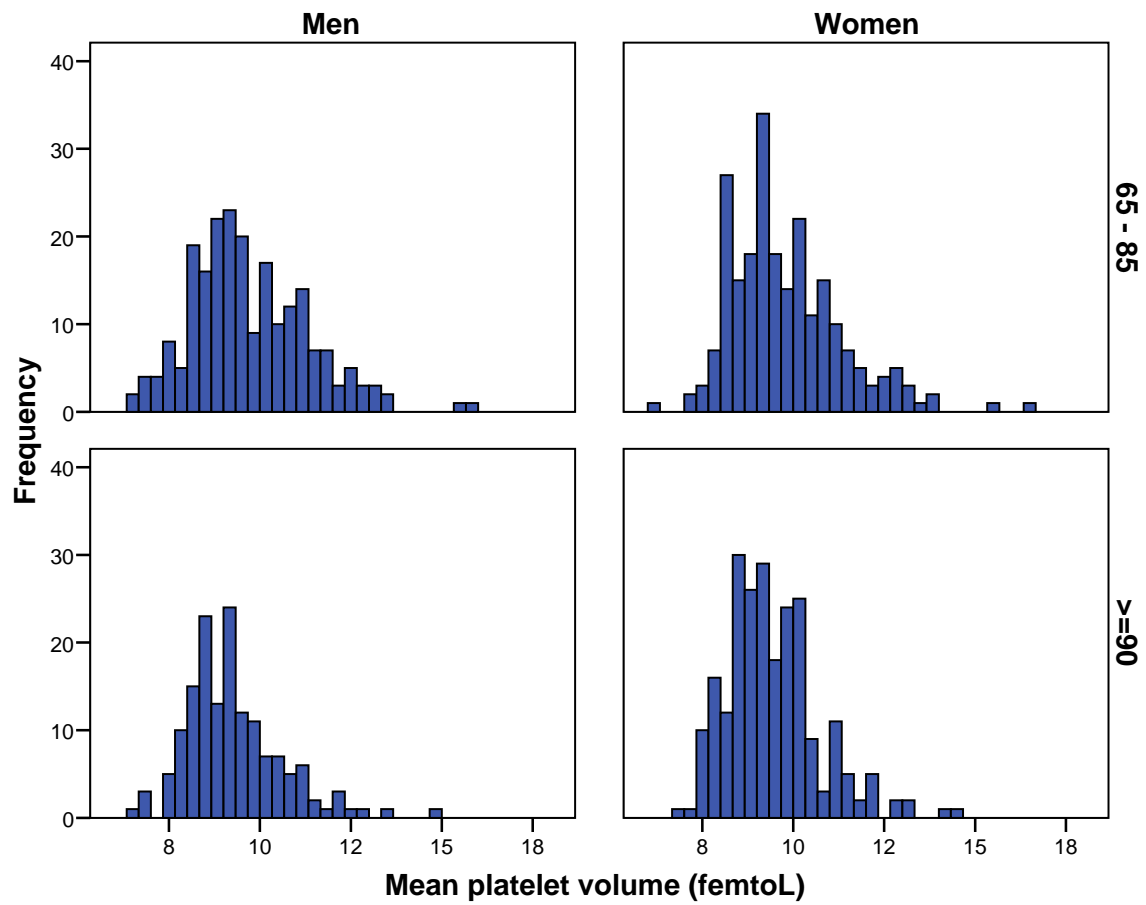


Figure 53: Frequency distribution of neutrophil granulocytes by age group and by gender.

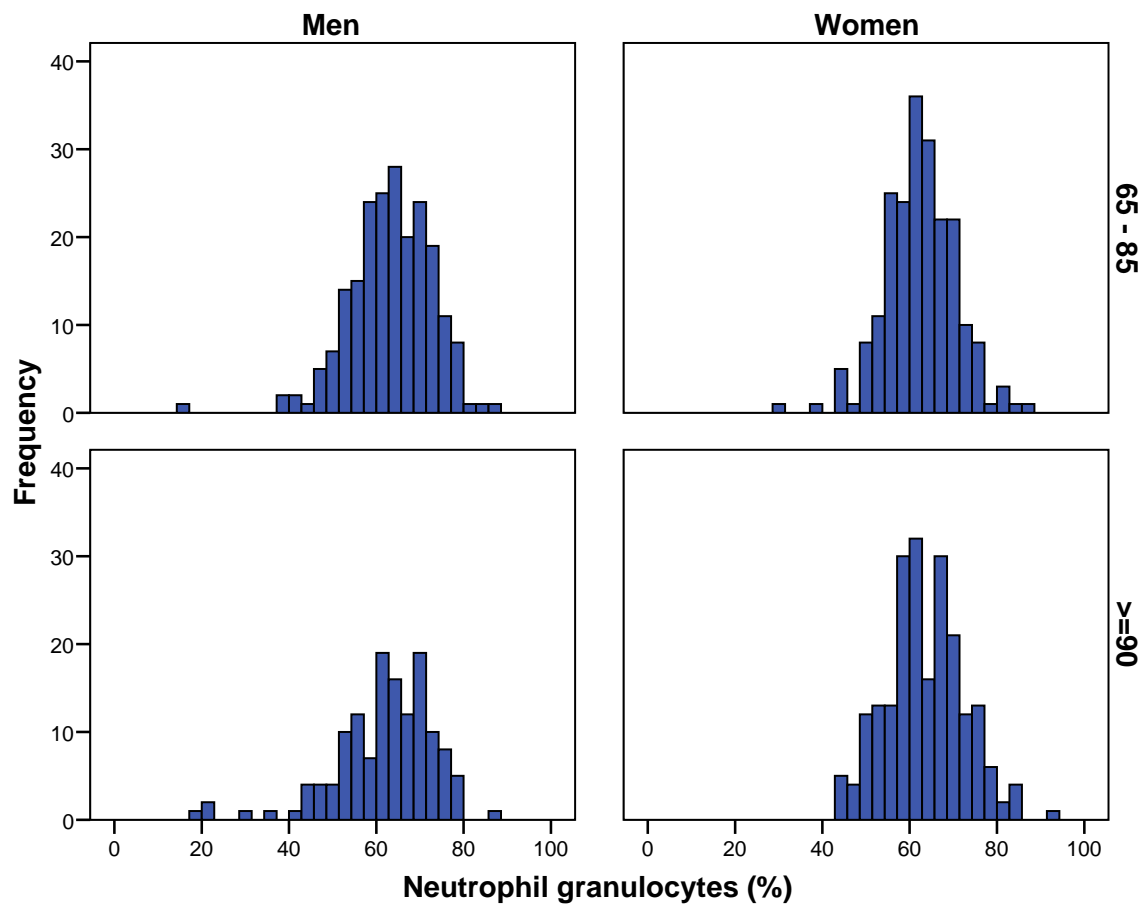


Figure 54: Frequency distribution of lymphocytes by age group and by gender.

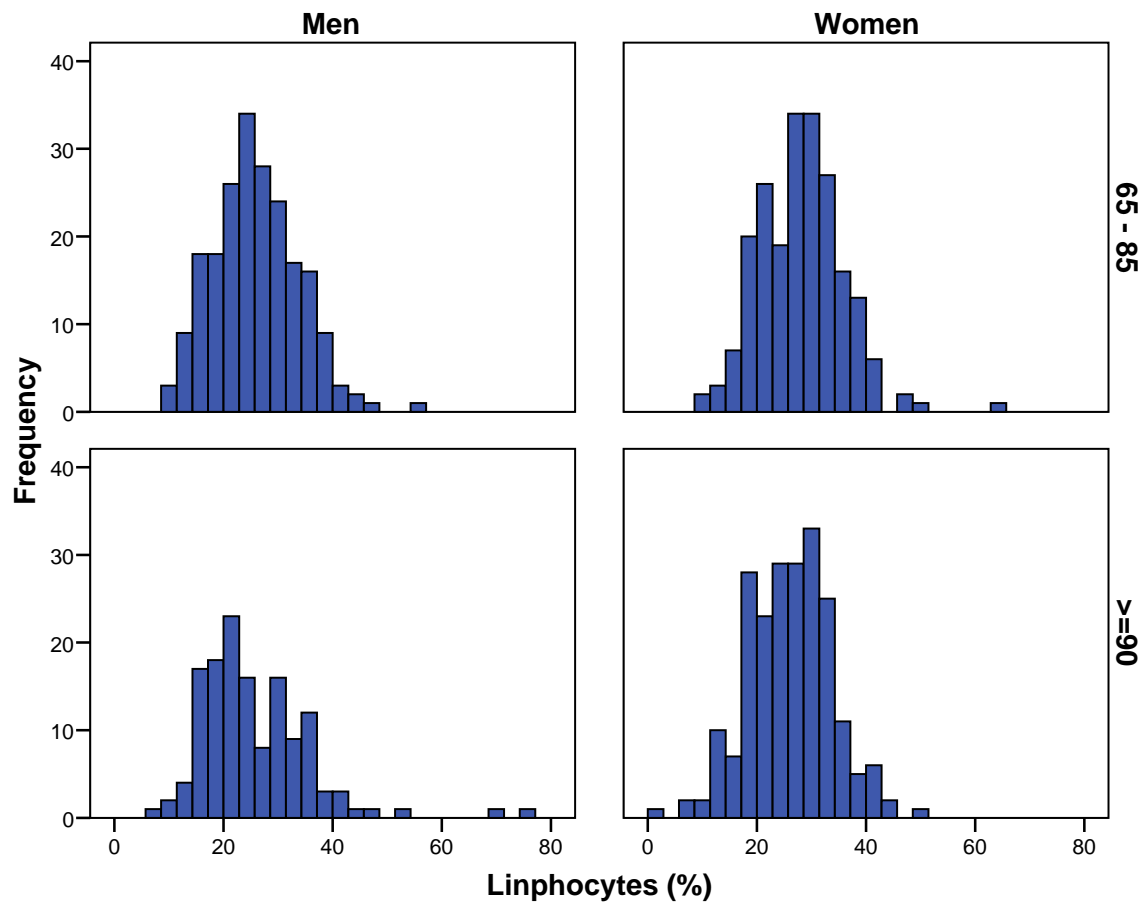


Figure 55: Frequency distribution of monocytes by age group and by gender.

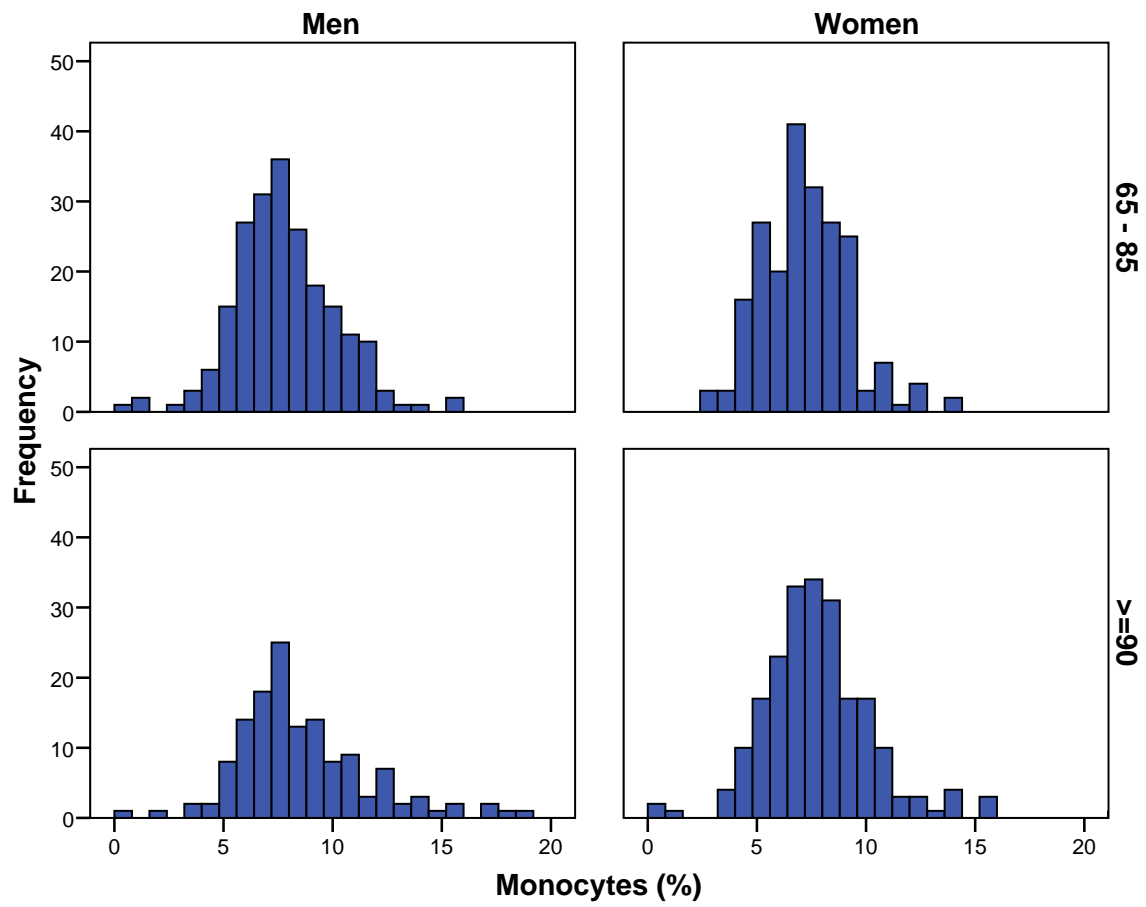


Figure 56: Frequency distribution of eosinophil granulocytes by age group and by gender.

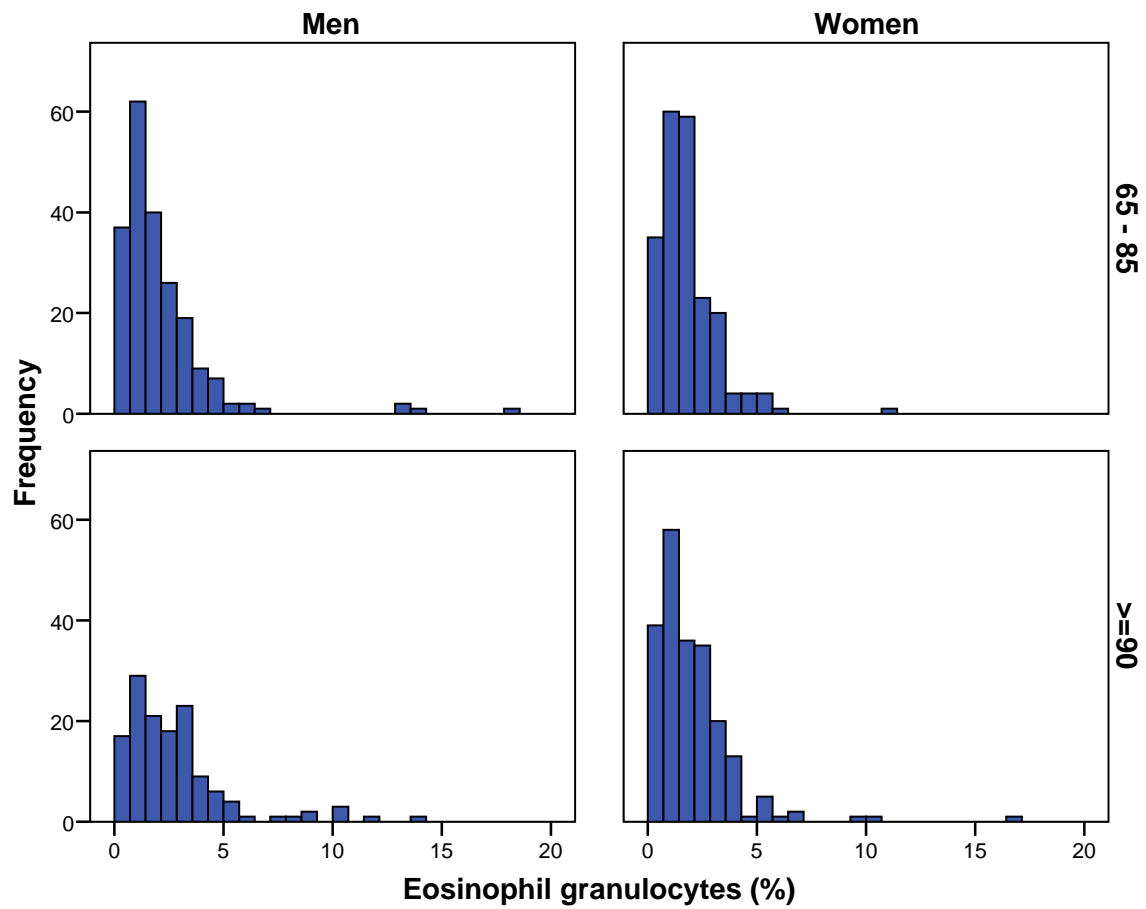


Figure 57: Frequency distribution of basophil granulocytes by age group and by gender.

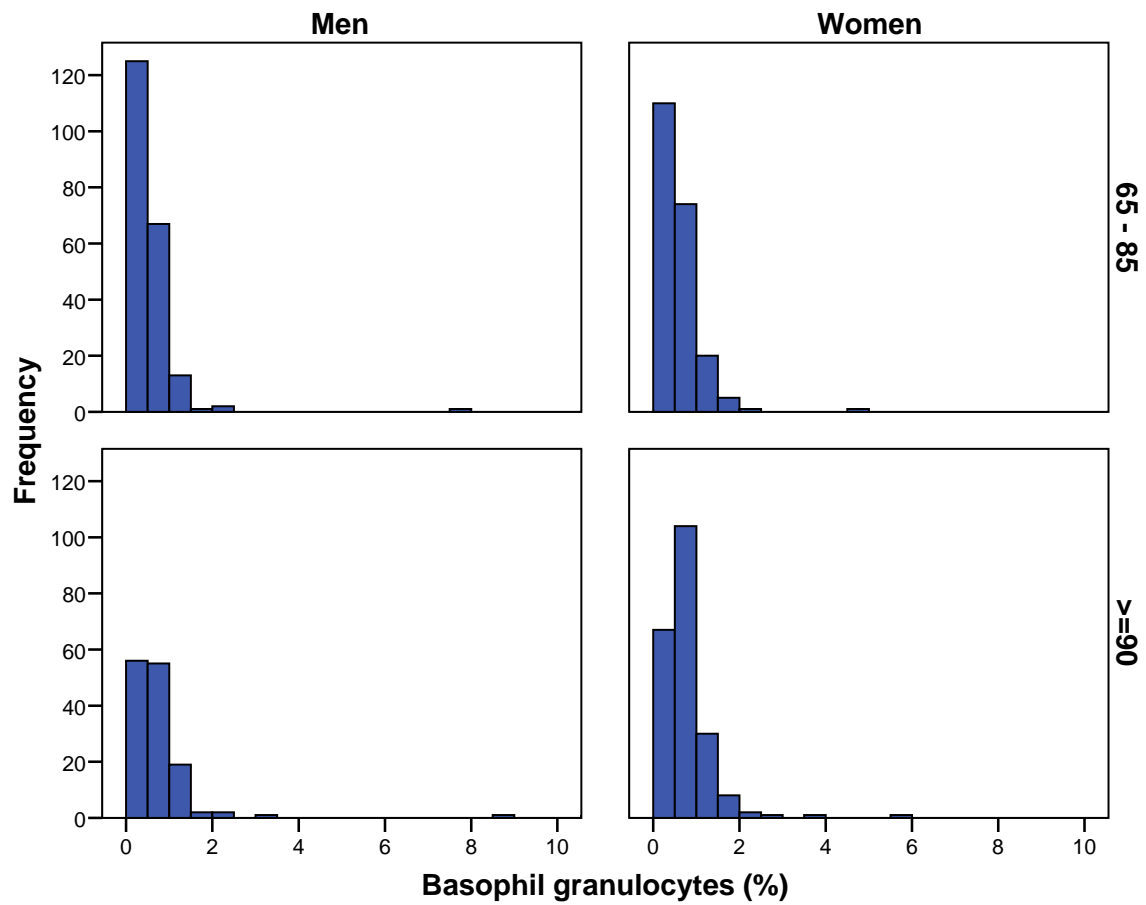


Figure 58: Frequency distribution of the prothrombin time by age group and by gender.

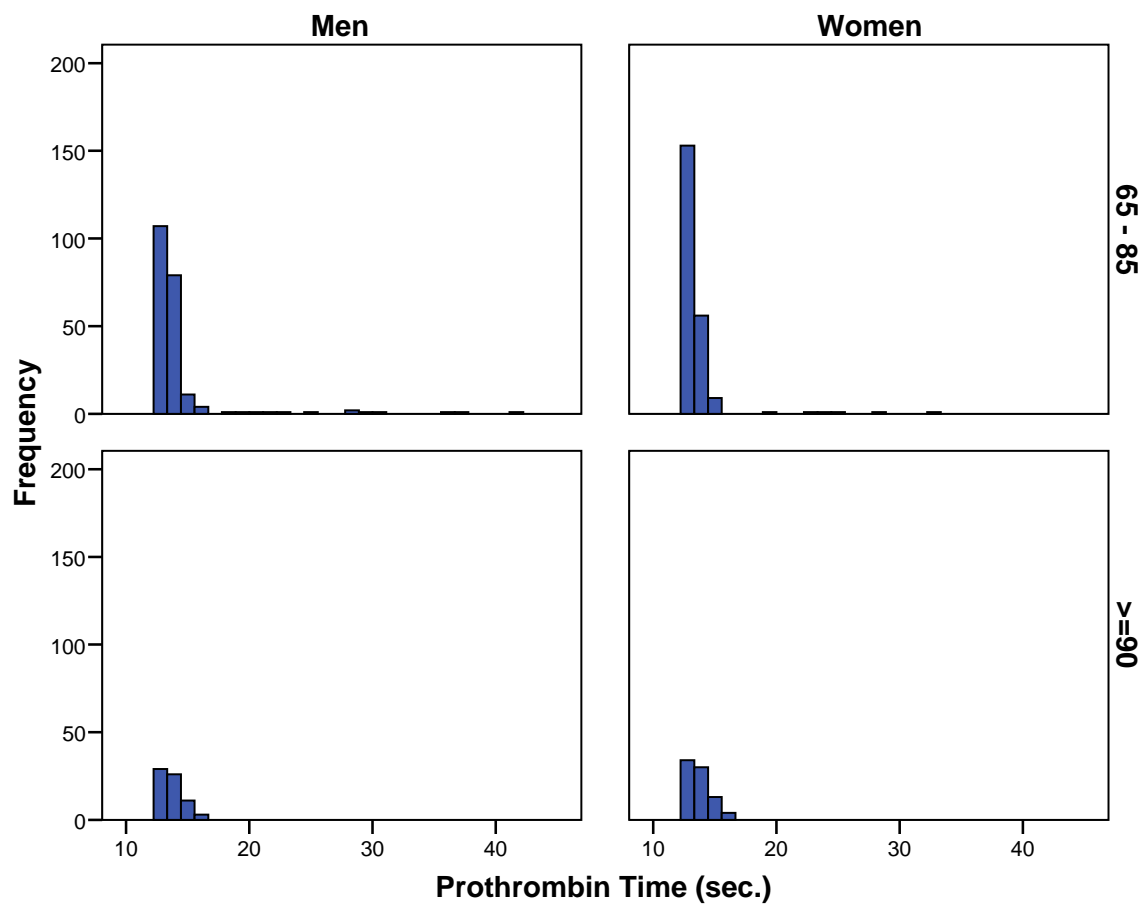


Figure 59: Frequency distribution of the prothrombin activity by age group and by gender.

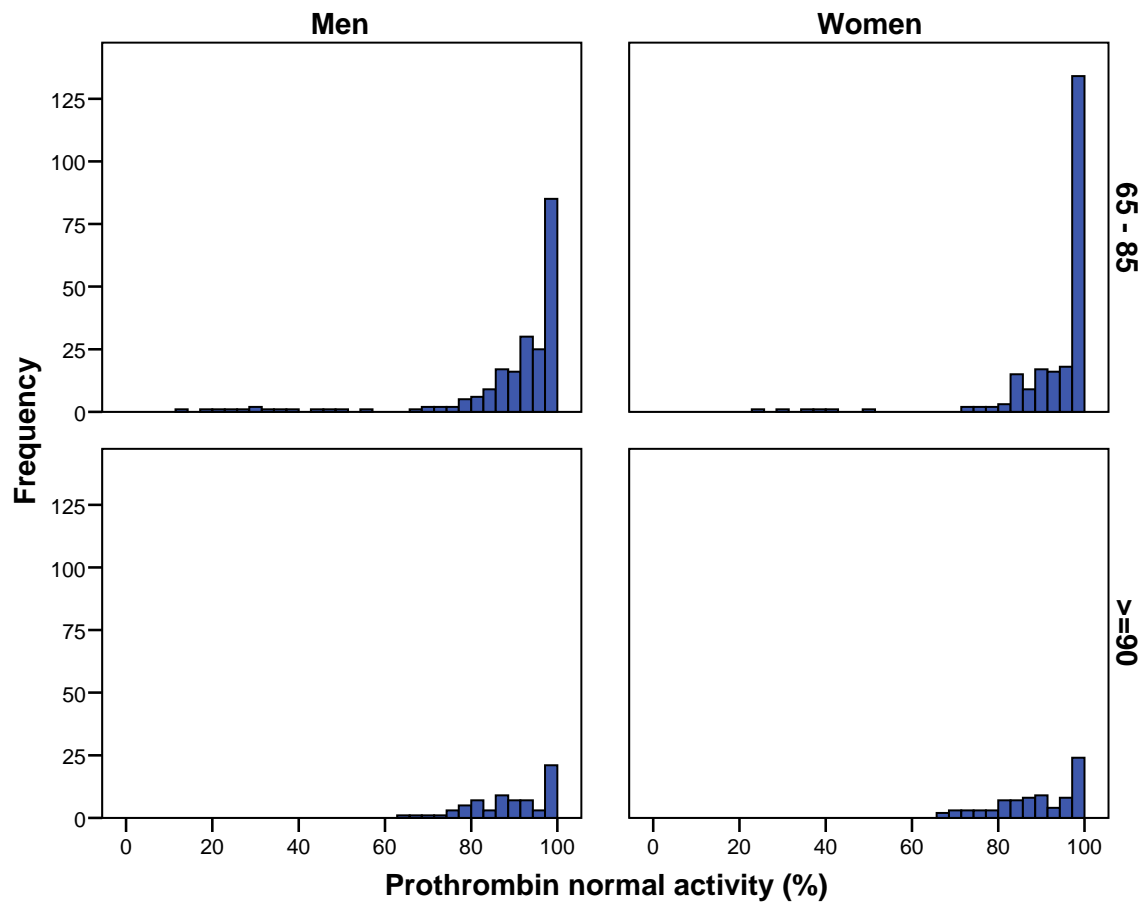


Figure 60: Frequency distribution of the INR by age group and by gender.

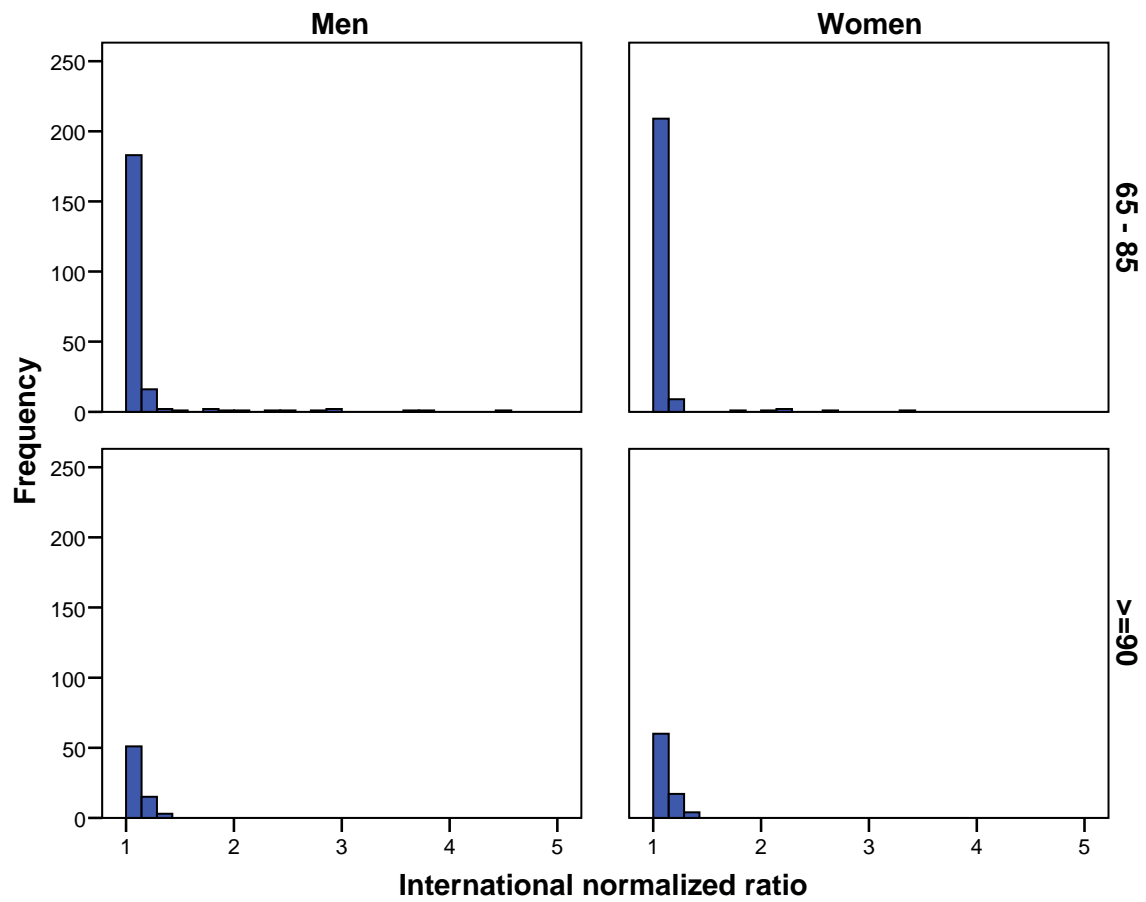


Figure 61: Frequency distribution of the plasma level of phibrinogen by age group and by gender.

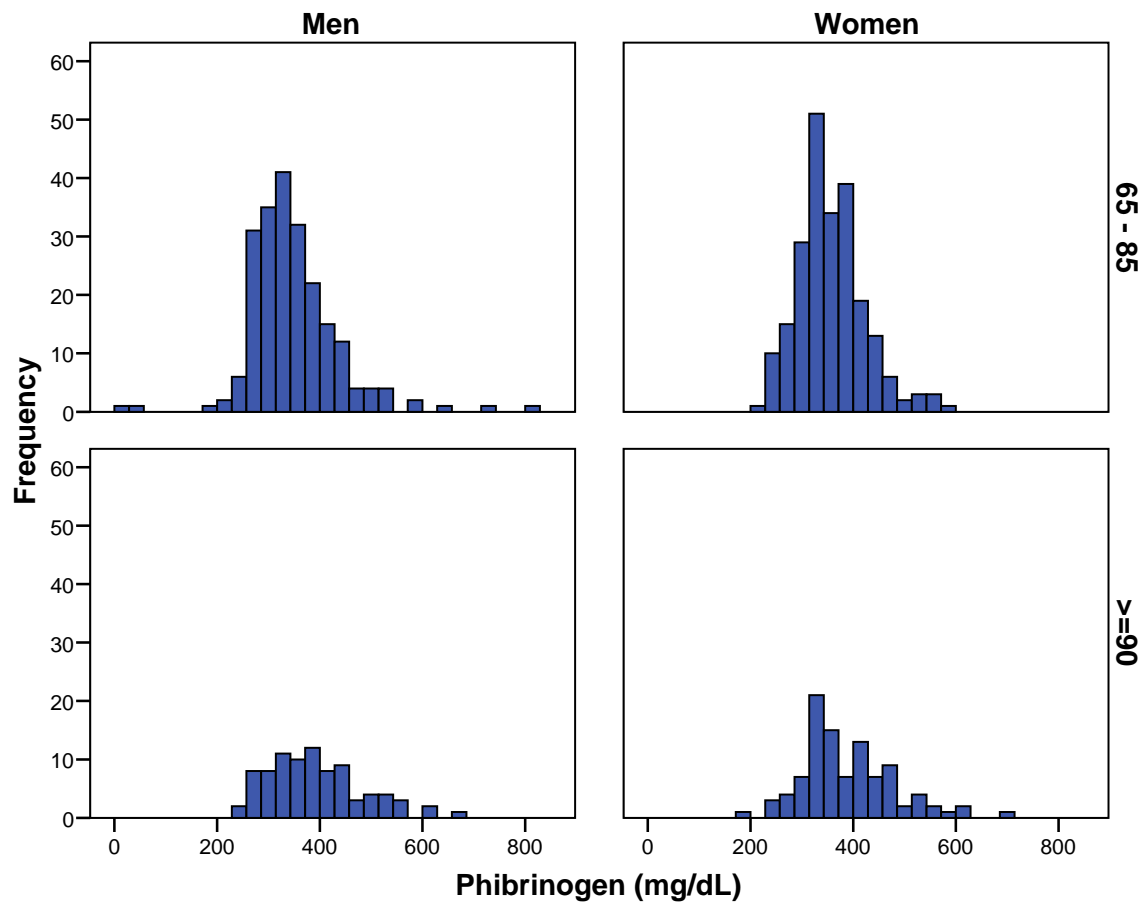


Figure 62: Frequency distribution of the Activated Partial Thromboplastin Time (aPTT) by age group and by gender.

