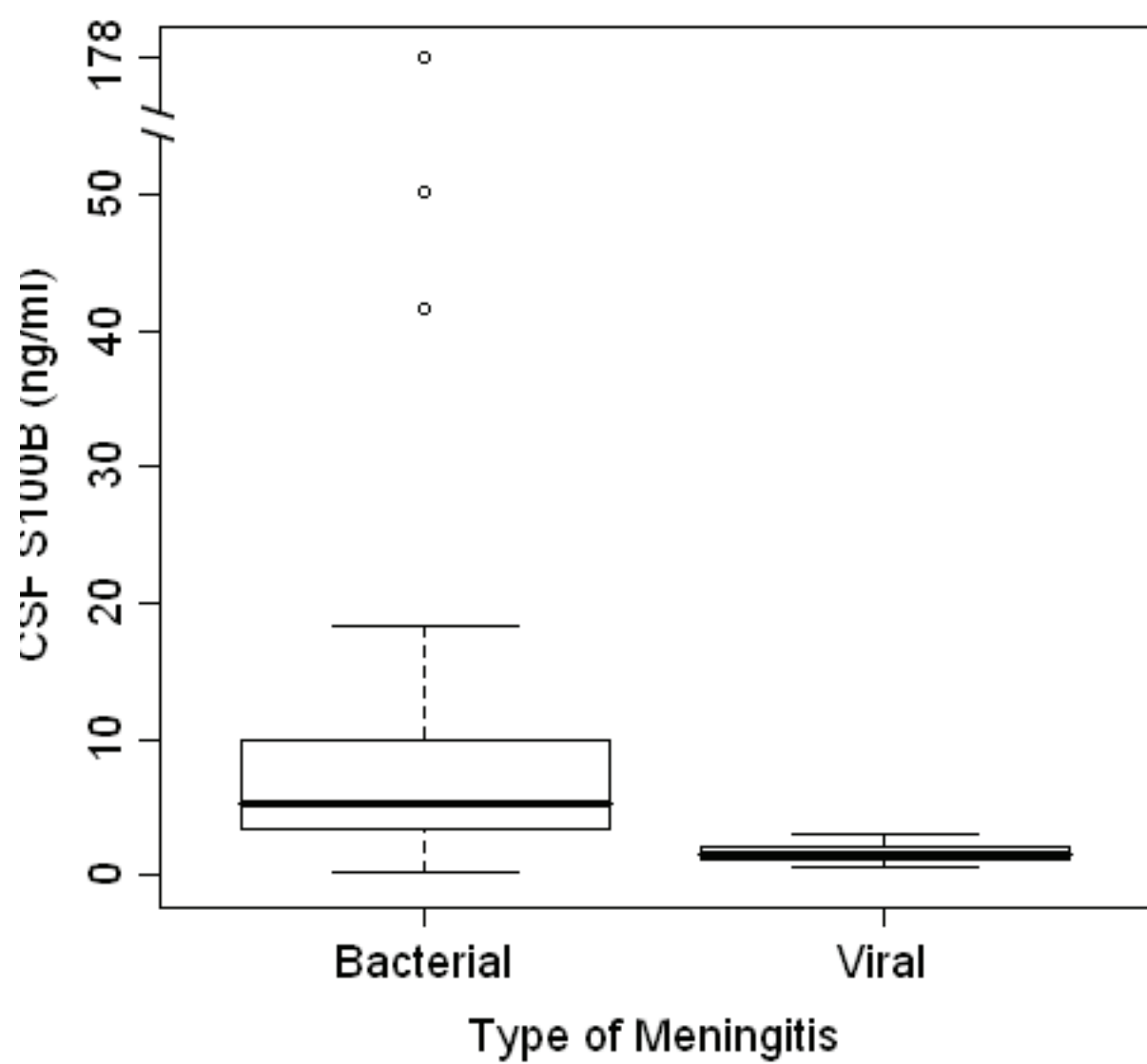


Figure 1 Flow chart of inclusion and exclusion criteria.



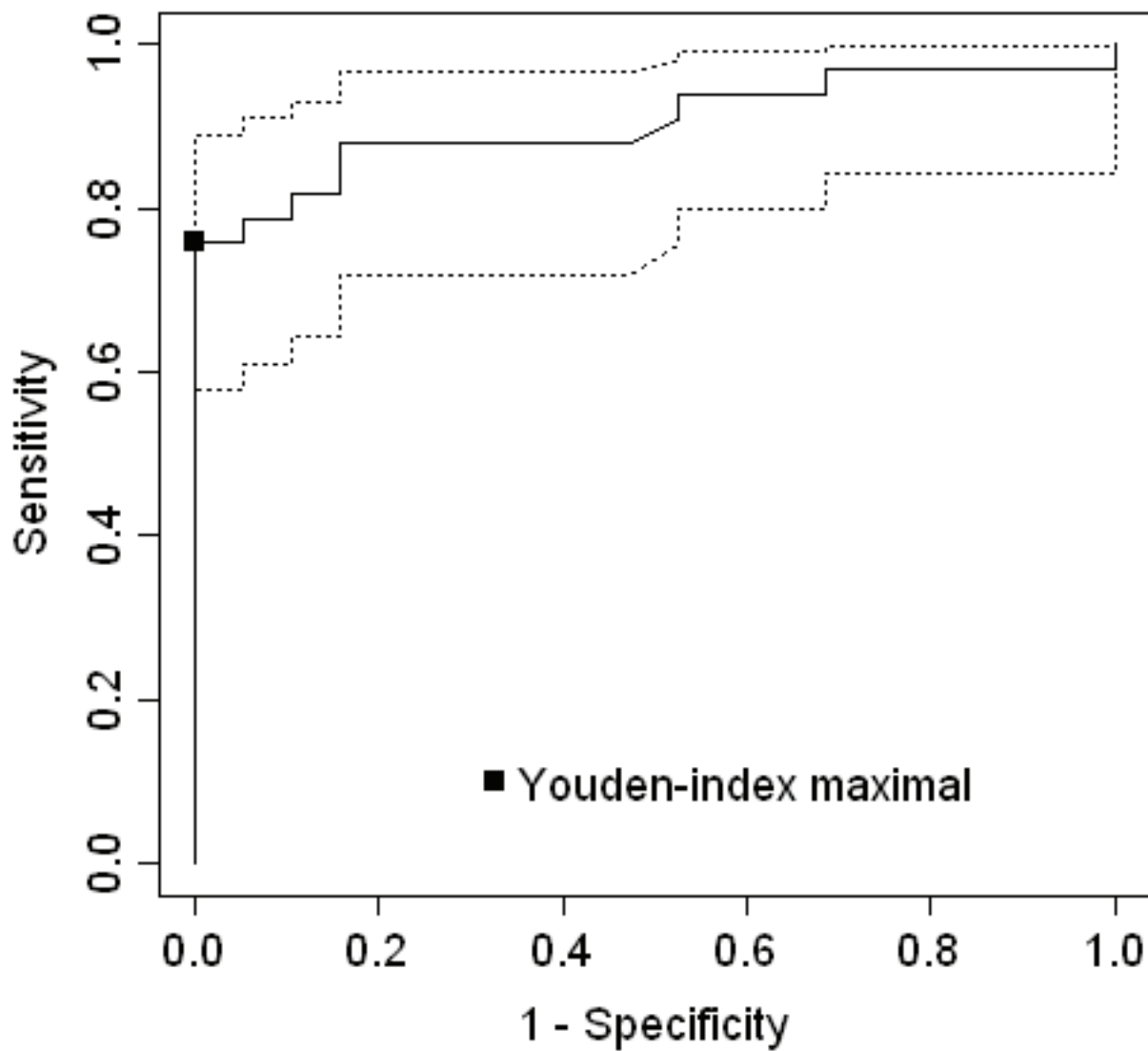


Figure 2 Up: Distribution of S100B concentration in the cerebrospinal fluid of patients with microbiological proven bacterial or viral meningitis. Down: Receiver Operator Characteristic (ROC) curve, representing sensitivity versus 1-specificity for each possible cut-off.