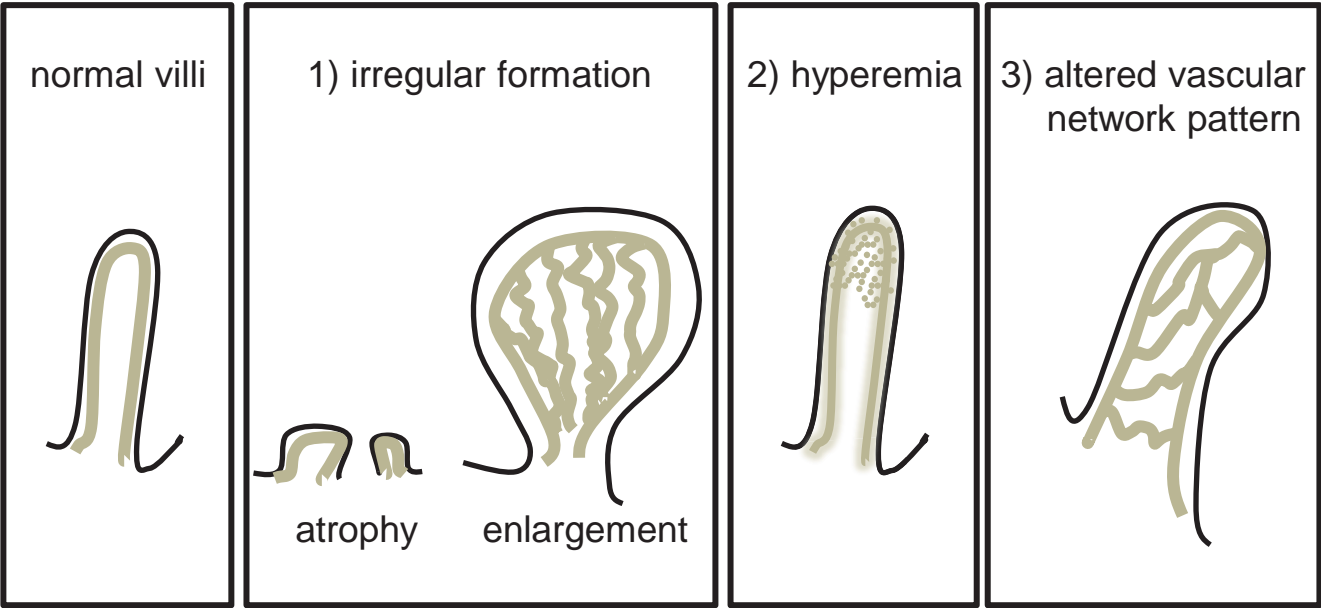
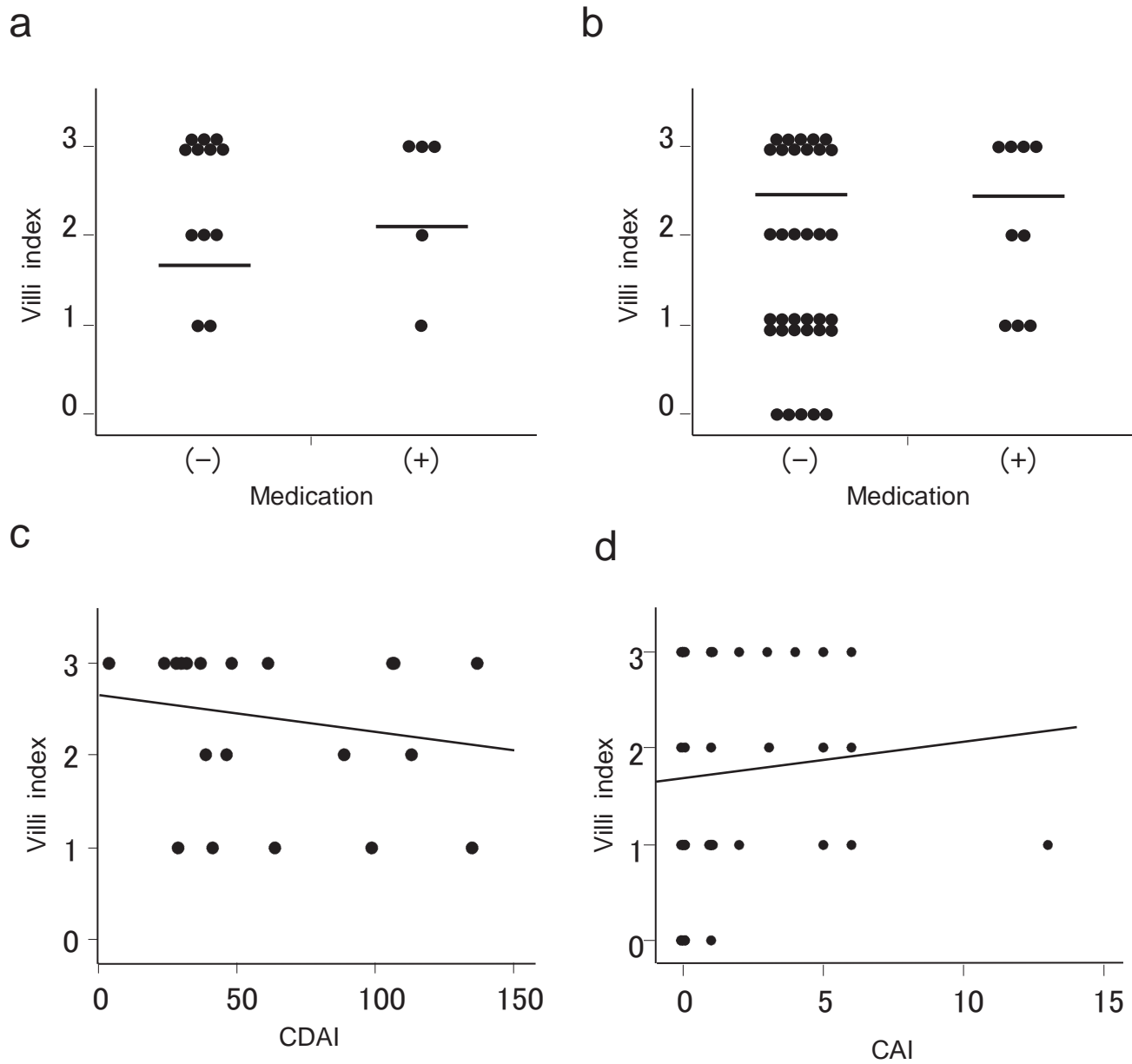


Supplementary Fig.1



Supplementary Fig.2



Supplementary Figure Legends

Supplementary Fig.1 An illustration of the categories of villi index: 1) irregular formation, 2) hyperemia, and 3) altered vascular network pattern.

Supplementary Fig.2 Association of villi indices of PPs with immunosuppressive medications or with clinical activity index. Villi indices were not significantly different between patients with and without immunosuppressive medications including corticosteroids, immunomodulators, and anti-tumor necrosis factor (TNF) therapies in both CD (a) and UC patients (b). The villi index did not correlate with clinical disease activity in both CD (c) and UC patients (d).