

Figure S1. SVCV systemic infection course in zebrafish larvae. A. Relative quantification of SVCV N gene transcripts as a measure of the viral load in the larvae during the course of infection. Three biological replicates were used to calculate the means \pm standard error of the mean. B. Relative quantification of *mxab* gene expression as a measure of the IFN response induced by the virus during the course of infection. Samples were obtained from infected larvae at different times post-infection. To avoid differences due to the larval development stage. The samples were standardized with respect to an uninfected control of the same age. Three biological replicates were used to calculate the means \pm standard error of the mean. Significant differences were displayed as ** ($0.001 < p < 0.01$) or * ($0.01 < p < 0.05$).

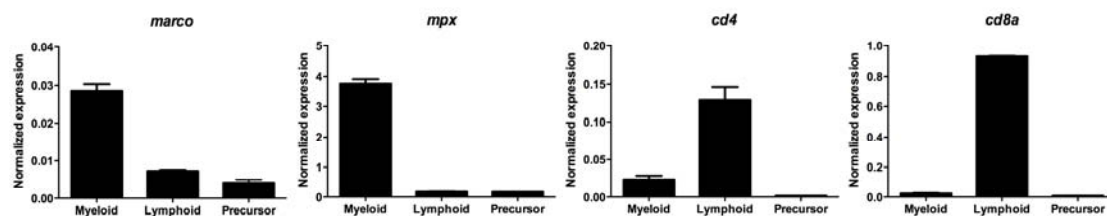


Figure S2. Cell markers analysis of zebrafish kidney populations. Expression level of *marco* (macrophages), *mpx* (neutrophils), *cd4* and *cd8a* (T lymphocytes). Three biological replicates were used to calculate the means \pm standard error of the mean.

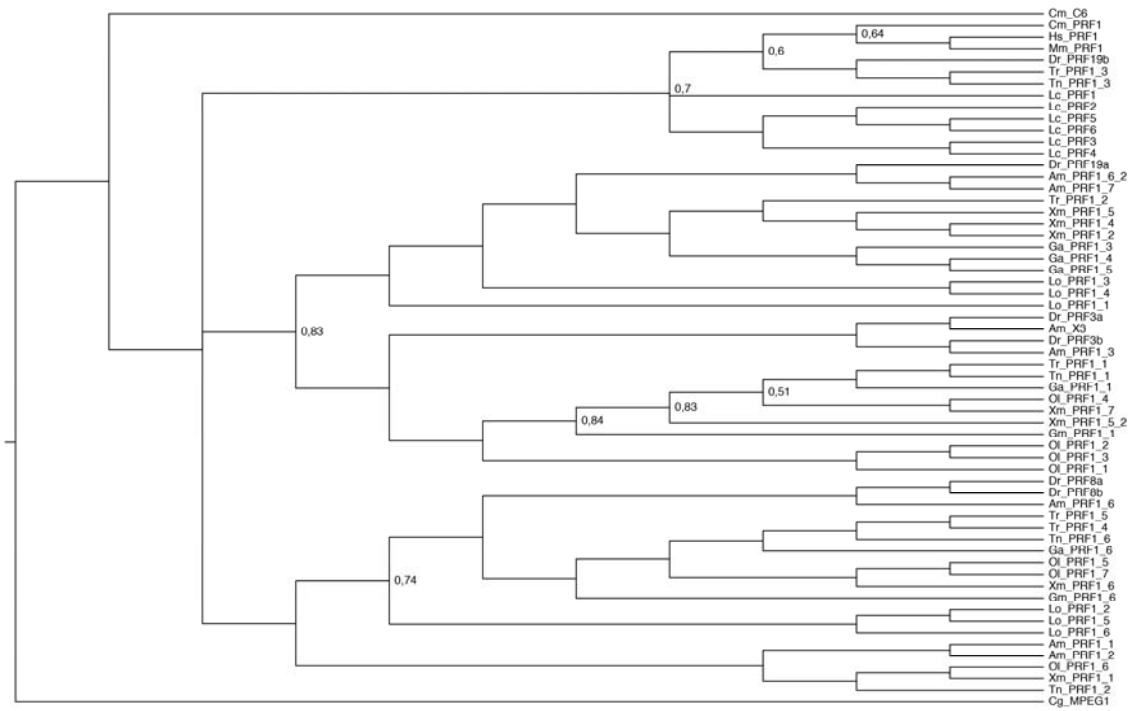


Figure S3. Unreconciled tree.