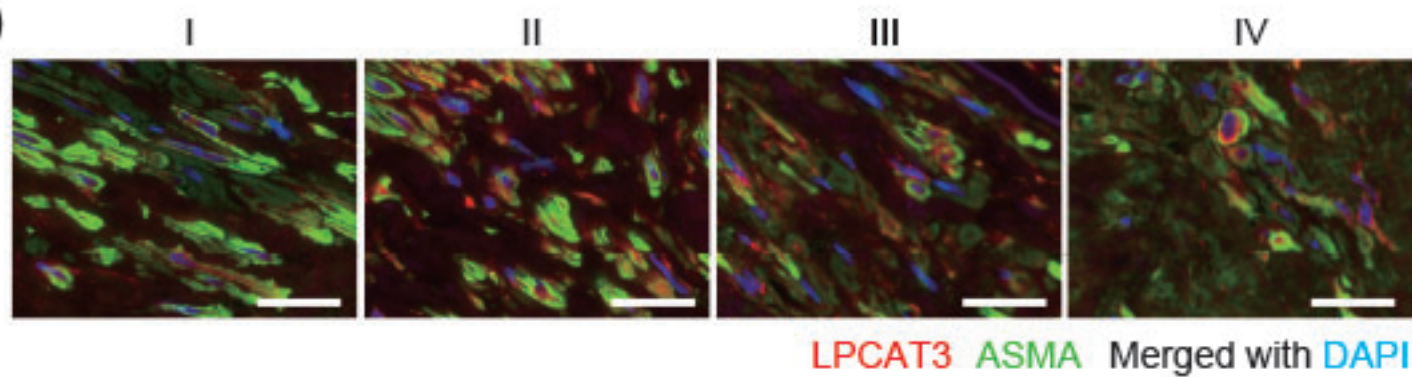
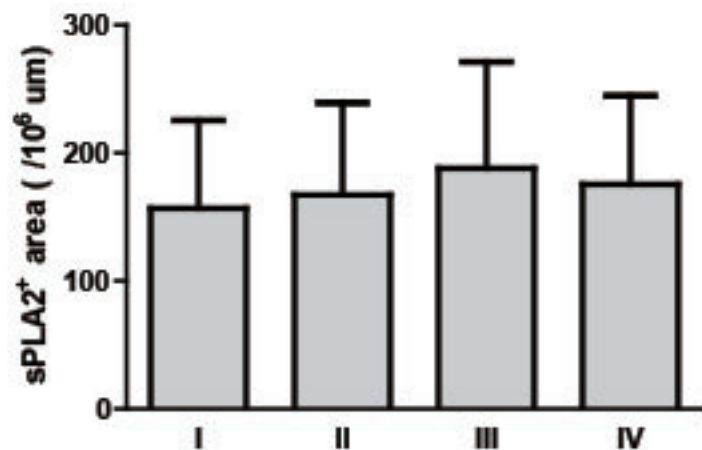


(A)



(B)



Supplementary Fig. 1

Secreted phospholipase A2 (sPLA2) expression in VSMCs from atherosclerotic tissue. (A) sPLA2 (red), alpha-smooth muscle cell actin, ASMA (green), and DAPI (blue) immunostaining (scale bars = 50 μm). (B) The sPLA2-positive area in atherosclerotic tissue was quantitated using BZ-H2C software. Statistical analysis was performed using Dunnet's test.