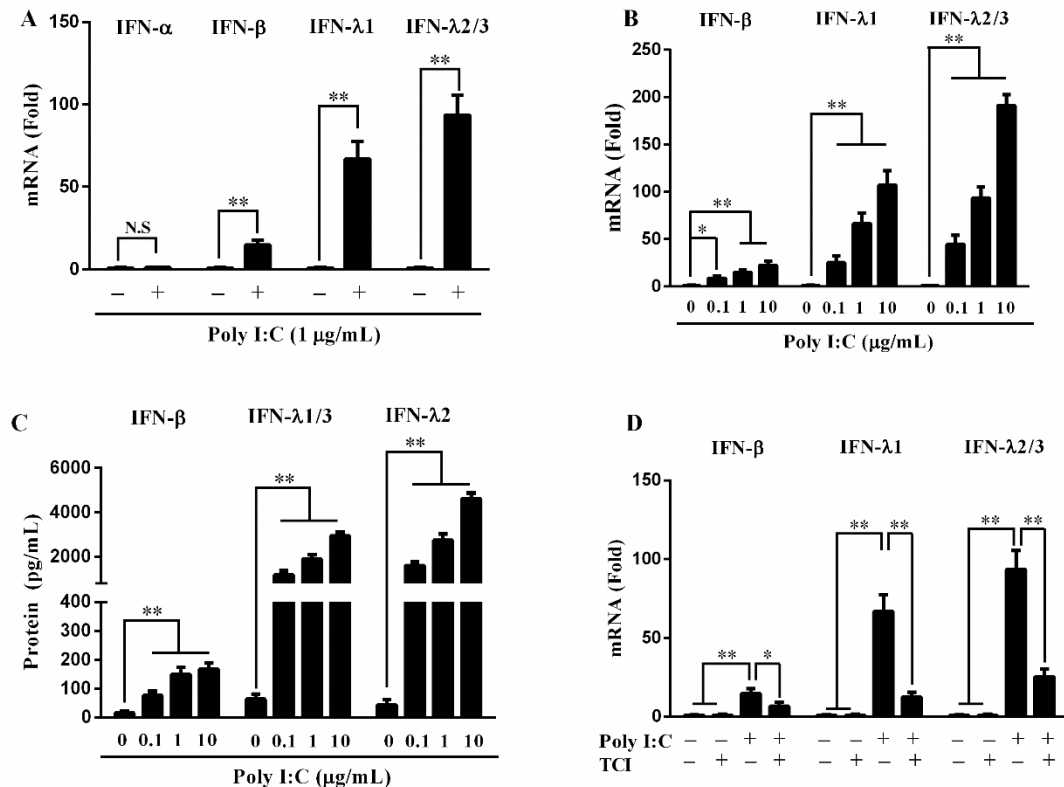


Supplementary Fig. 1

Effect of Poly I:C on the IFNs.



(A) End1/E6E7 cells were transfected with or without Poly I:C (1 µg/mL) for 12 h.

RNA extracted from the cells was subjected to real-time PCR for IFNs as indicated.

(B, C) Dose-dependent effect of Poly I:C on IFN induction of End1/E6E7 cells at

mRNA (B) and protein (C) levels. (D) Effect of TLR3/dsRNA complex inhibitor

(TCI) on the induction of IFNs by Poly I:C. End1/E6E7 cells were pretreated with

TCI (100nM) for 1 h prior to Poly I:C (1 µg/mL) transfection for 12 h. Total cellular

RNA was subjected to the real-time PCR for the mRNA levels detection of IFN-β and

IFN-λs. The results are the mean ± SD of triplicate cultures, representative of three

independent experiments (* $P < 0.05$, ** $P < 0.01$, N.S. as no significance difference).