

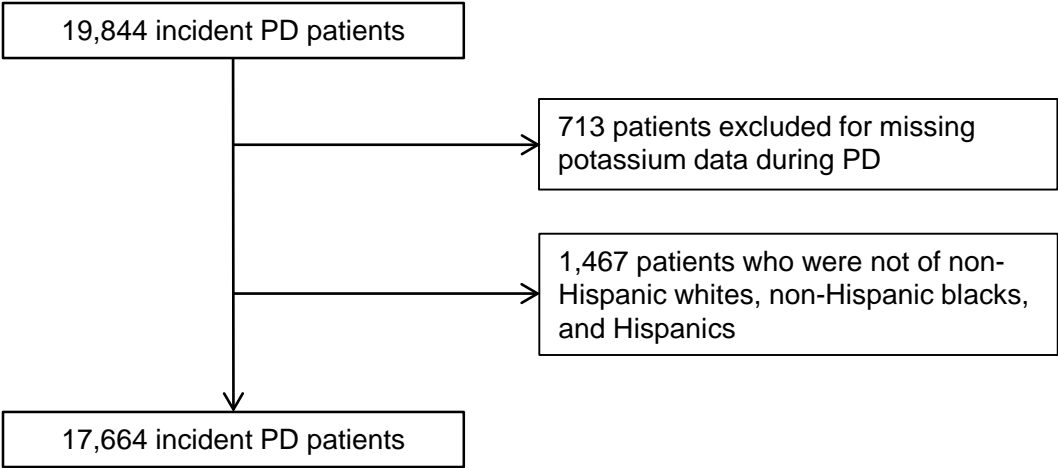
Appendix-Table S1. Baseline characteristics stratified race/ethnicity and serum potassium in 16,004 incident PD patients

	Non-Hispanic white			non-Hispanic black			Hispanic		
	Serum potassium (mEq/L)			Serum potassium (mEq/L)			Serum potassium (mEq/L)		
Variable	<3.5	3.5–5.0	>5.0	<3.5	3.5–5.0	>5.0	<3.5	3.5–5.0	>5.0
Patient number	1,479 (15%)	7,506 (76%)	901 (9%)	779 (20%)	2,840 (73%)	295 (8%)	282 (13%)	1,666 (76%)	256 (12%)
Age (year)	63 ± 14	60 ± 15	54 ± 15	54 ± 14	51 ± 14	47 ± 13	55 ± 16	50 ± 16	47 ± 15
Female (%)	50	39	36	61	50	46	56	43	34
DM (%)	57	61	61	62	63	60	72	69	71
Primary insurance (%)									
Medicare	53	49	45	44	41	46	48	44	43
Medicaid	2	3	4	3	4	6	11	11	13
Others	45	48	51	53	55	48	41	45	44
Comorbidities (%)									
Hypertension	53	49	51	64	62	61	45	46	50
CHF	20	18	24	21	22	29	17	18	23
ASHD	18	19	18	16	14	12	13	13	12
Other cardiac disease	16	16	15	13	12	13	10	12	9
Baseline BMI (kg/m ²)	27 (24–32)	28 (24–32)	27 (23–32)	28 (24–34)	29 (25–34)	27 (24–32)	27 (24–32)	28 (24–32)	28 (24–31)
Baseline laboratory tests									
Potassium (mEq/L)	3.2 ± 0.2	4.2 ± 0.4	5.5 ± 0.4	3.2 ± 0.2	4.1 ± 0.4	5.5 ± 0.4	3.2 ± 0.2	4.2 ± 0.4	5.5 ± 0.5
WBC (× 10 ³ /μL)	7.3 (5.9–9.2)	7.3 (5.9–8.8)	7.2 (5.9–8.7)	6.7 (5.2–8.6)	6.3 (5.1–7.8)	6.4 (5.2–7.9)	7.2 (5.8–9.3)	7.2 (5.9–8.9)	6.9 (5.8–8.3)
Hemoglobin (g/dL)	11.8 ± 1.5	11.7 ± 1.5	11.7 ± 1.5	11.4 ± 1.6	11.4 ± 1.6	11.5 ± 1.7	11.8 ± 1.5	11.7 ± 1.6	11.7 ± 1.7
Albumin (g/dL)	3.5 ± 0.5	3.7 ± 0.5	3.8 ± 0.5	3.6 ± 0.5	3.7 ± 0.5	3.8 ± 0.5	3.4 ± 0.5	3.7 ± 0.5	3.7 ± 0.6
Creatinine (mg/dL)	5.3 ± 2.3	6.3 ± 2.9	8.6 ± 4.1	7.4 ± 3.3	8.6 ± 4.2	11.5 ± 5.4	5.9 ± 2.7	7.6 ± 3.7	9.6 ± 4.3
Calcium (mg/dL)	8.8 ± 0.8	8.9 ± 0.7	8.9 ± 0.8	8.8 ± 0.8	8.8 ± 0.8	8.7 ± 0.8	8.6 ± 0.7	8.6 ± 0.8	8.6 ± 0.8
Phosphorus (mg/dL)	4.2 ± 1.2	5.0 ± 1.5	6.1 ± 1.8	4.4 ± 1.3	5.0 ± 1.4	6.0 ± 1.8	4.3 ± 1.3	5.2 ± 1.5	5.9 ± 1.8
Bicarbonate (mEq/L)	27.2 ± 3.1	25.4 ± 3.4	23.1 ± 3.5	26.8 ± 3.0	24.8 ± 3.4	22.2 ± 3.8	26.6 ± 2.9	24.7 ± 3.4	22.9 ± 4.0

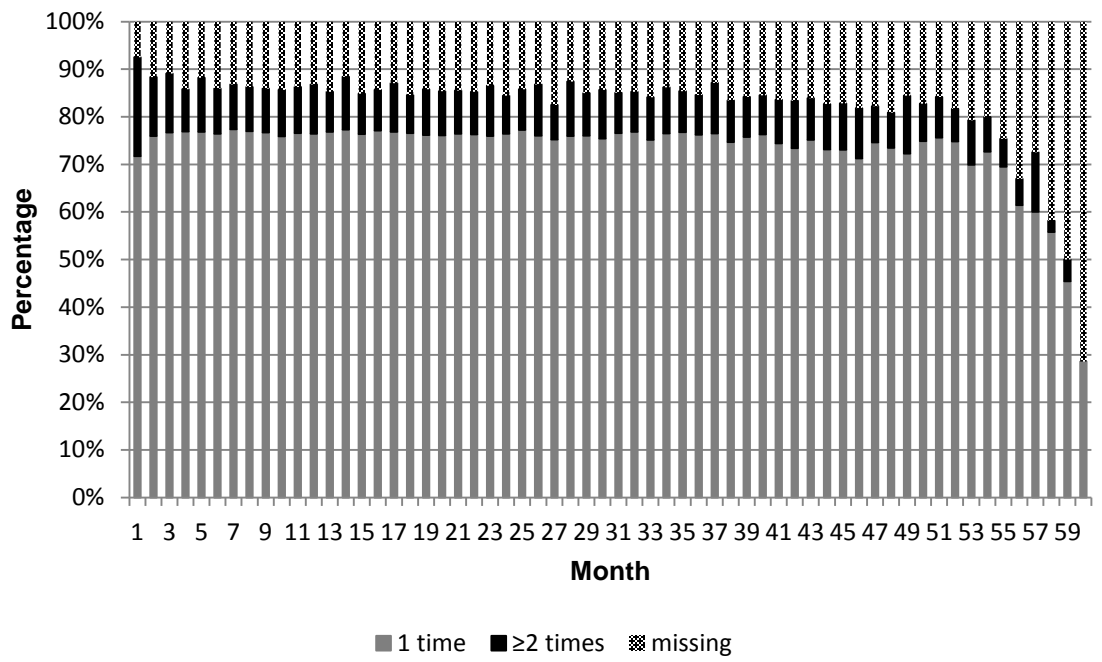
Note: continuous values are expressed as mean \pm SD if normally distributed or median (interquartile range) if skewed.

Abbreviations: DM, diabetes mellitus; CHF, congestive heart failure; ASHD, atherosclerotic heart disease; WBC, white blood cell; BMI, body mass index

Appendix-Figure S1. Cohort construction

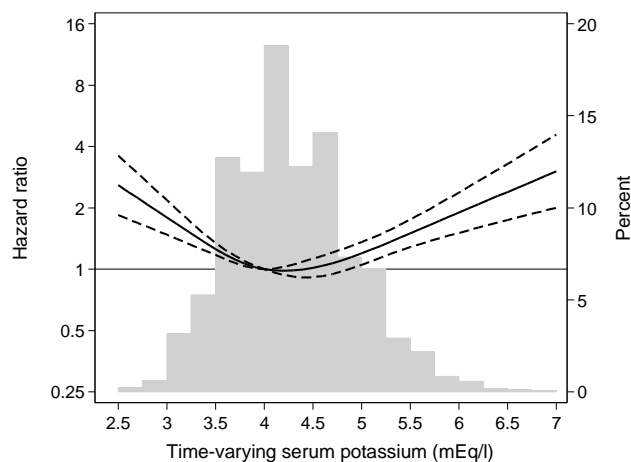


Appendix-Figure S2. Frequency of serum potassium measurement each month from PD start

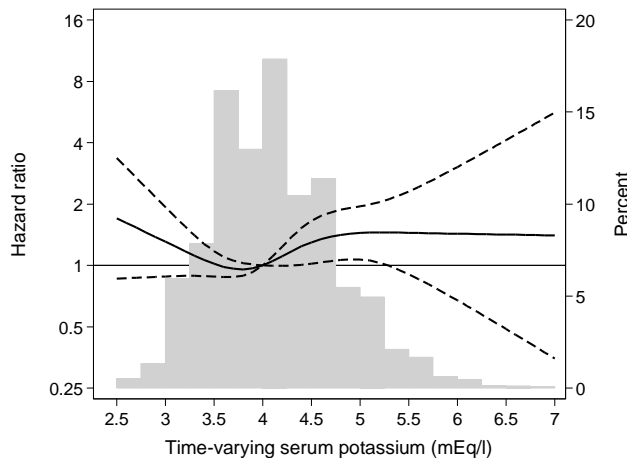


Appendix-Figure S3

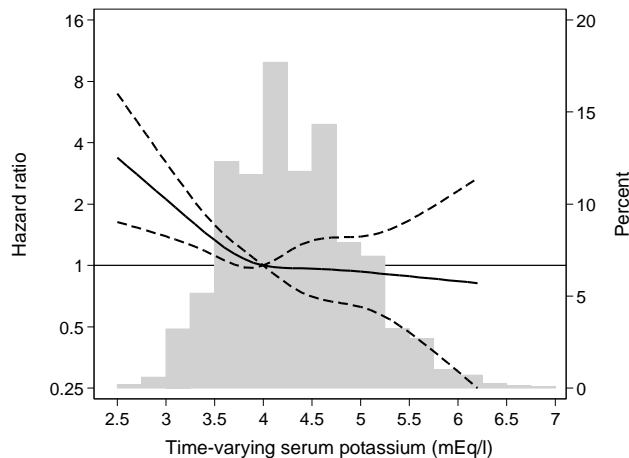
A Non-Hispanic white



B Non-Hispanic black

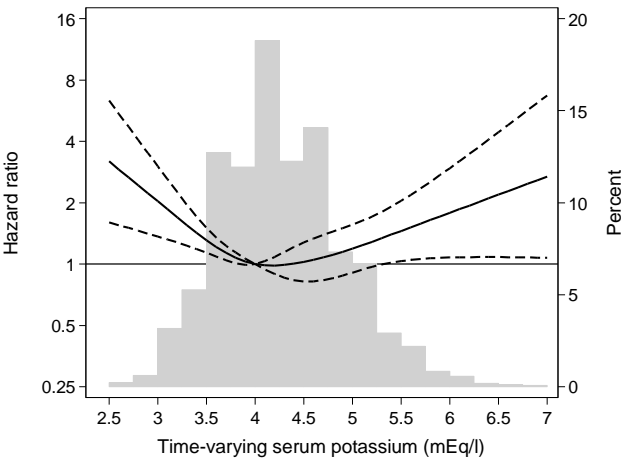


C Hispanic

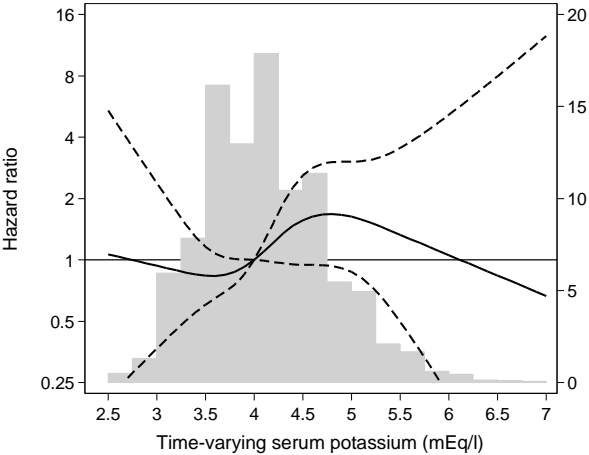


Appendix-Figure S4

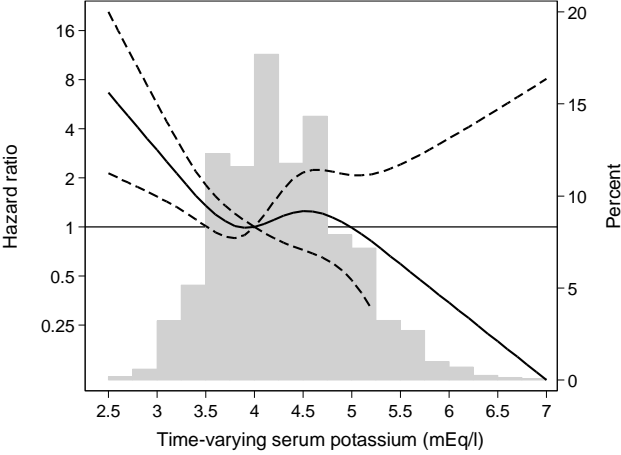
A Non-Hispanic white



B Non-Hispanic black



C Hispanic



Appendix-Figure S5

