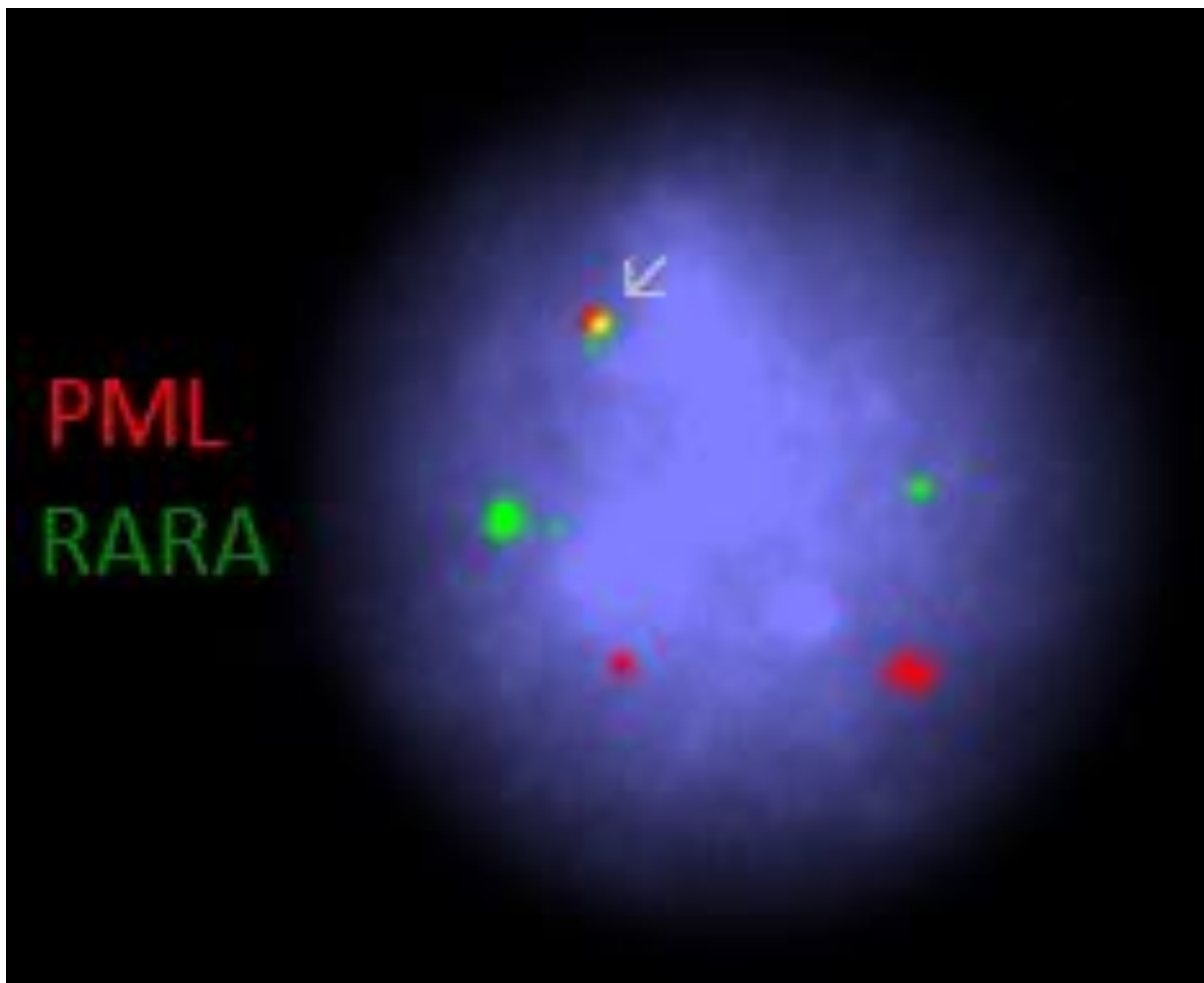
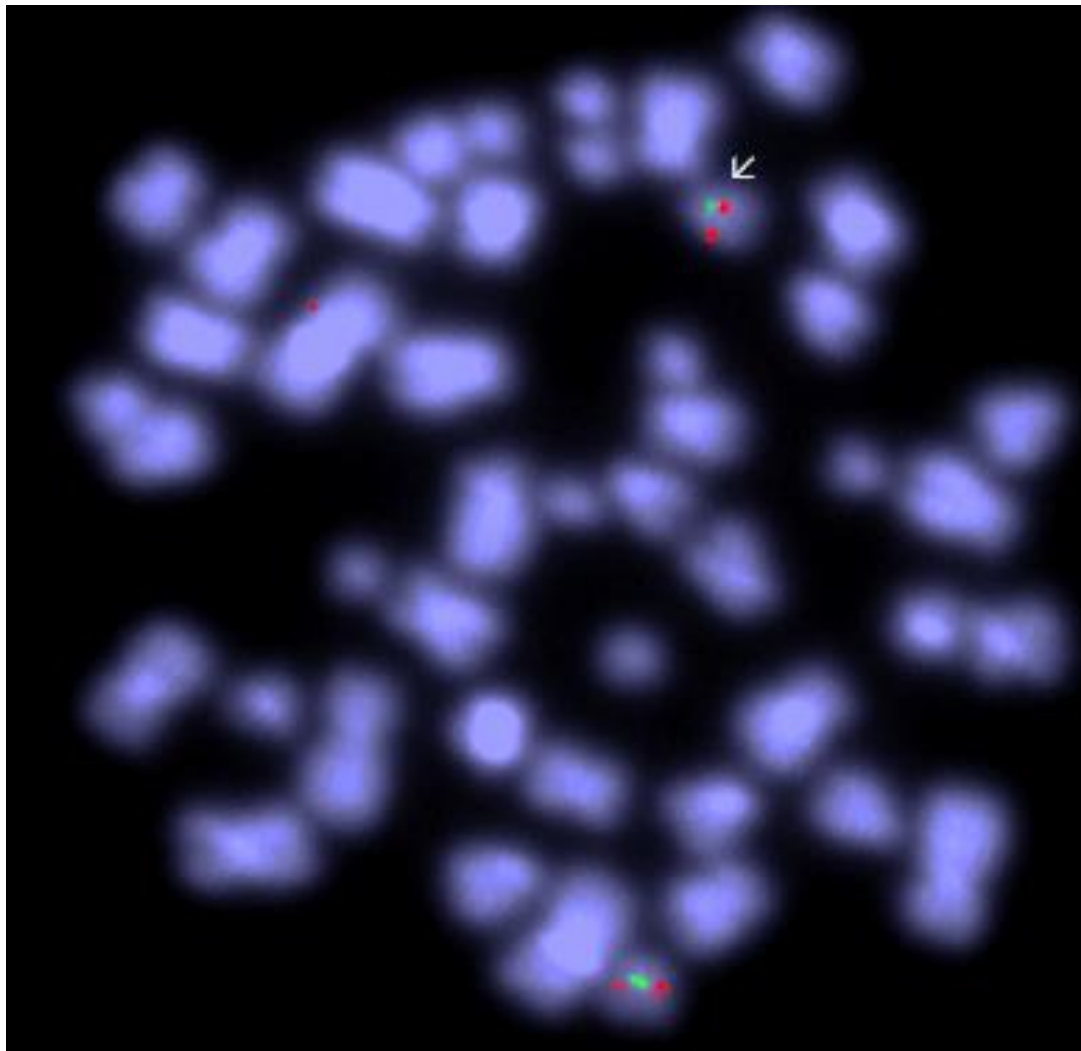


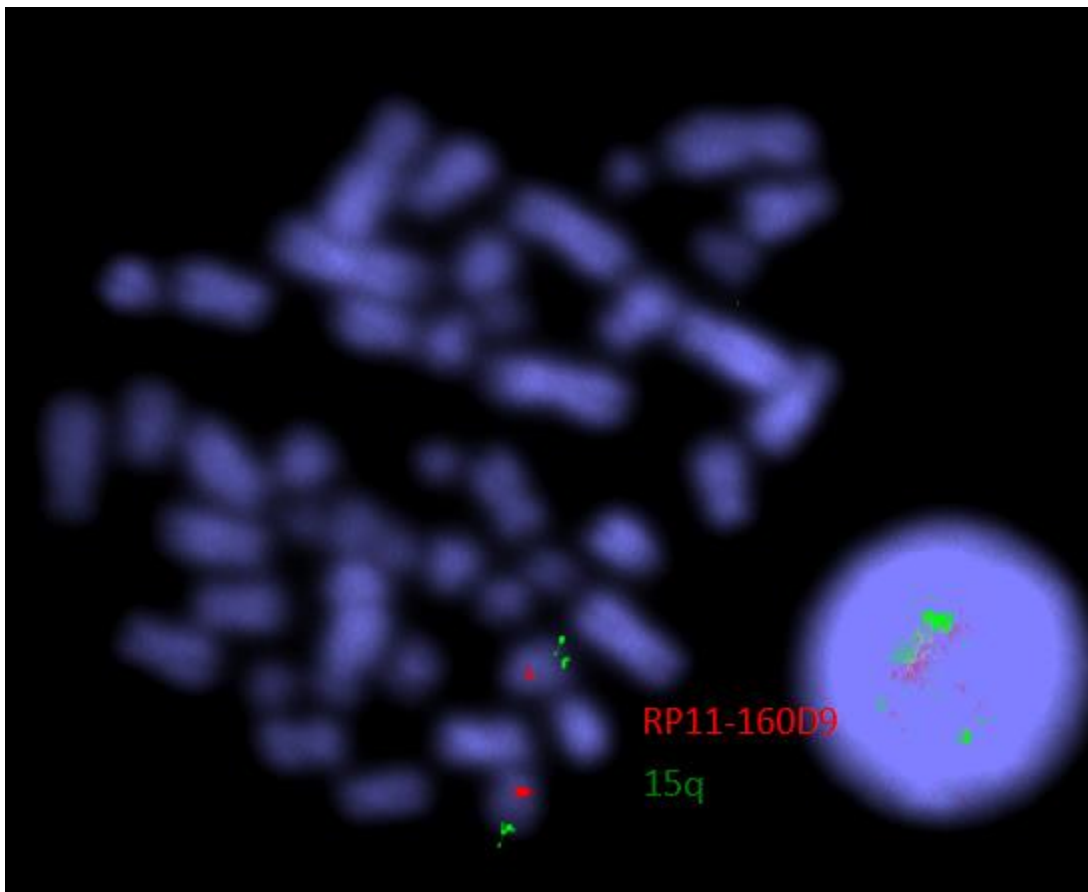
Supplemental Figure A: Bone marrow morphology showing abnormal promyelocytes with large irregularly folded or bilobed nuclei and abnormal granulation.



Supplemental Figure B: Interphase FISH showing two copies of each *PML* (red) and *RARA* (green) probes and PML-*RARA* single fusion signal “arrow”. One each of the *PML* and *RARA* signals was of diminished intensity.



Supplemental Figure C: Metaphase FISH using the NF1 (red) probe and the chromosome 17 centromere (green). The NF1 probe was intact and located at the same position on both the normal and the derivative (arrow) chromosome 17.



Supplemental Figure D: Metaphase FISH revealed that the 15q (green) subtelomere region was intact as well as the RP11-160D9 (red) control probe on both chromosomes