

# **Comparison of Preterm and Term Wharton's Jelly-Derived Mesenchymal Stem Cell Properties in Differing Oxygen Tensions**

Saloni Balgi-Agarwal<sup>a</sup>, Caitlyn Winter<sup>a</sup>, Alexis Corral<sup>a</sup>,  
Shamimunisa B Mustafa<sup>a</sup>, Peter Hornsby<sup>b</sup>, Alvaro Moreira<sup>a</sup>

University of Texas Health-San Antonio, <sup>a</sup>Department of Pediatrics,  
<sup>b</sup>Department of Cellular and Integrative Physiology, 7703 Floyd Curl Drive,  
San Antonio, TX 78229 USA

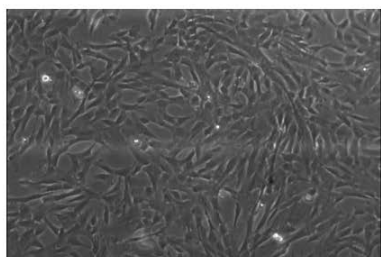
## **Corresponding Author:**

Alvaro Moreira MD, MSc  
University of Texas Health-San Antonio  
Department of Pediatrics  
Division of Neonatology MC-7812  
San Antonio, TX 78229 USA  
Email: [moreiraa@uthscsa.edu](mailto:moreiraa@uthscsa.edu)  
Office: (210) 567-5226 Fax: (210) 567-5169

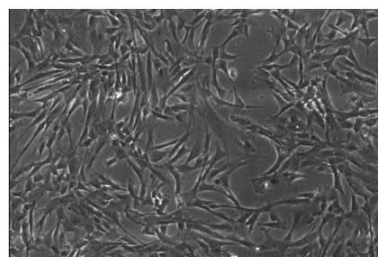
**Running title:** Preterm vs Term Wharton's jelly MSCs

**Keywords:** Mesenchymal stromal cells, umbilical cord, regenerative medicine, neonatology, hyperoxia, hypoxia

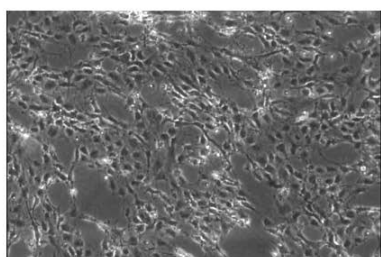
**Supplementary Figure 1 a.** Preterm WJ-MSCs at 16 hours, 24 hours, 44 hours and 48 hours after exposure to 90% oxygen. Cell injury is noted by decreased number and presence of detached cells with increasing duration of injury.



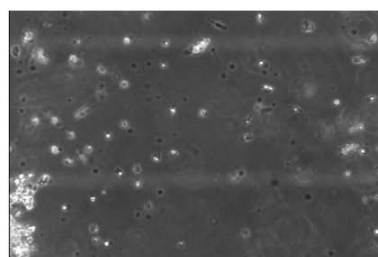
Preterm WJ-MSCs - 16 hours after 90% oxygen exposure



Preterm WJ-MSCs - 24 hours after 90% oxygen exposure

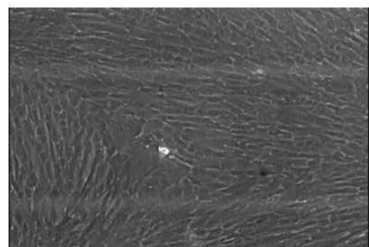


Preterm WJ-MSCs - 44 hours after 90% oxygen exposure

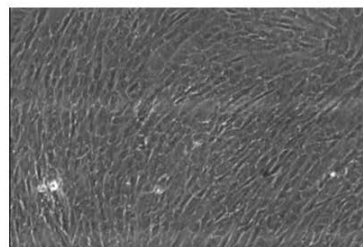


Preterm WJ-MSCs - 48 hours after 90% oxygen exposure

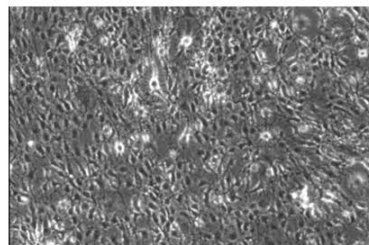
**Supplementary Figure 1 b.** Term WJ-MSCs at 16 hours, 24 hours, 44 hours and 48 hours after exposure to 90% oxygen. Cell injury is noted by decreased number and presence of detached cells with increasing duration of injury.



Term WJ-MSCs - 16 hours after 90% oxygen exposure



Term WJ-MSCs - 24 hours after 90% oxygen exposure



Term WJ-MSCs - 44 hours after 90% oxygen exposure



Term WJ-MSCs - 48 hours after 90% oxygen exposure