

# Online supplementary appendix

## Favourable response to treatment with avelumab in a HIV-positive patient with advanced Merkel cell carcinoma previously refractory to chemotherapy

Mohammed U Al Homsy,<sup>1</sup> Mai Mostafa,<sup>1</sup> Khaled Fahim<sup>2</sup>

1. National Center for Cancer Care and Research, Doha, Qatar; 2. Merck Serono Middle East FZ-LLC.

### Contents

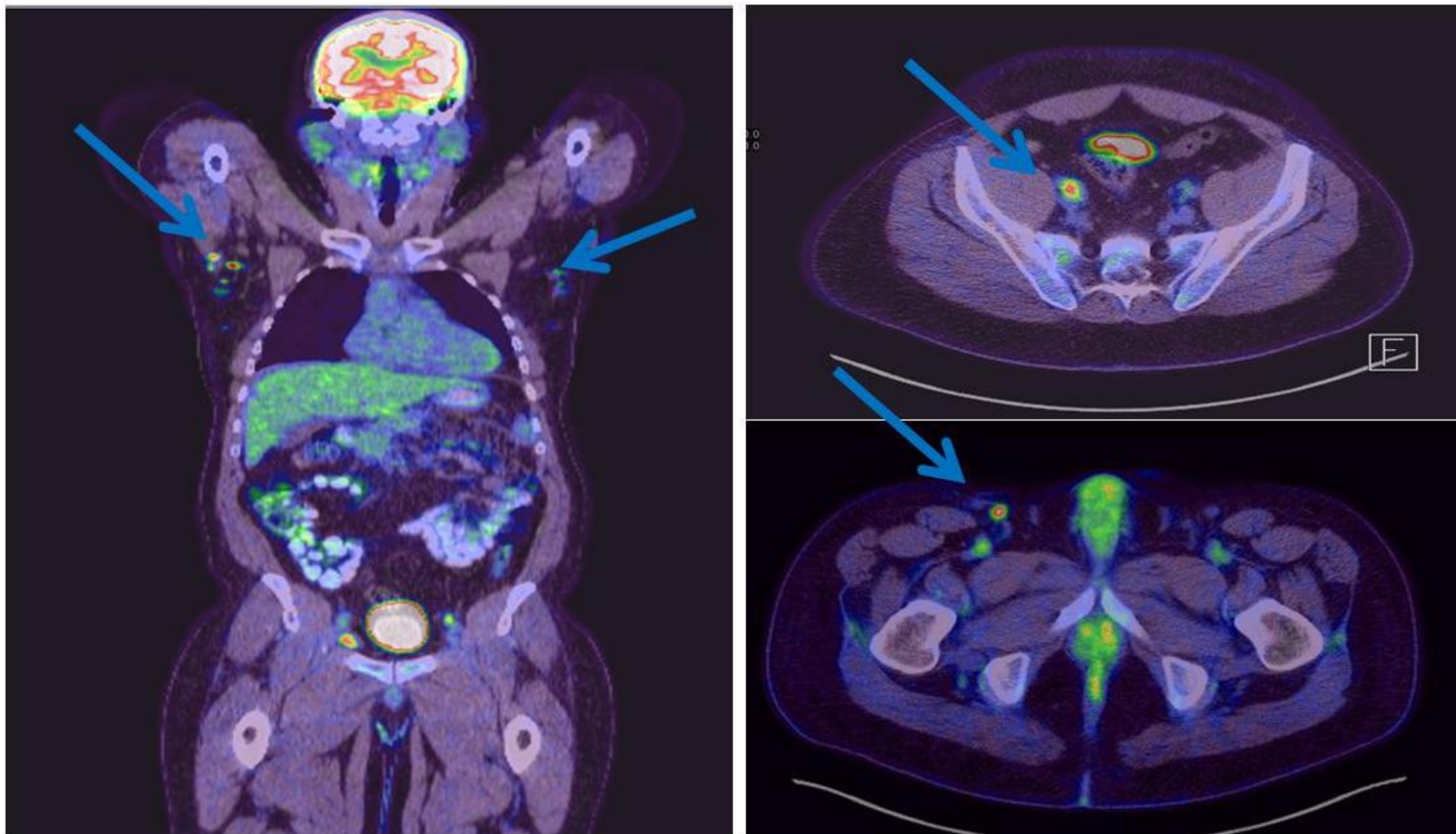
<b>Table S1.</b> Dosage and location of radiotherapy. ....	2
<b>Fig. S1.</b> PET-CT images used for initial tumour staging. ....	3
<b>Fig. S2.</b> Radiation fields for radiotherapy. ....	4
<b>Fig. S3.</b> Thyroid function tests during treatment with avelumab. ....	5
<b>Fig. S4.</b> Haematology profile during treatment with avelumab. ....	6
<b>Fig S5.</b> Liver function tests during treatment with avelumab. ....	7
<b>Fig S6.</b> Blood pressures during treatment with avelumab. ....	7

**Table S1.** Dosage and location of radiotherapy.

**Radiotherapy duration 6½ weeks (15 March 2017 to 30 April 2017)**

<b>Treated Site</b>	<b>Dose per fraction</b>	<b>Total Dose</b>
Phase I: pelvis + lower para-aortic and right inguinal regions	1.8 Gy	45 Gy
Phase I: Simultaneous boost to gross nodes	2 Gy	50 Gy
Phase II: boost to gross nodes	2 Gy	16 Gy
Total dose to gross nodes		66 Gy

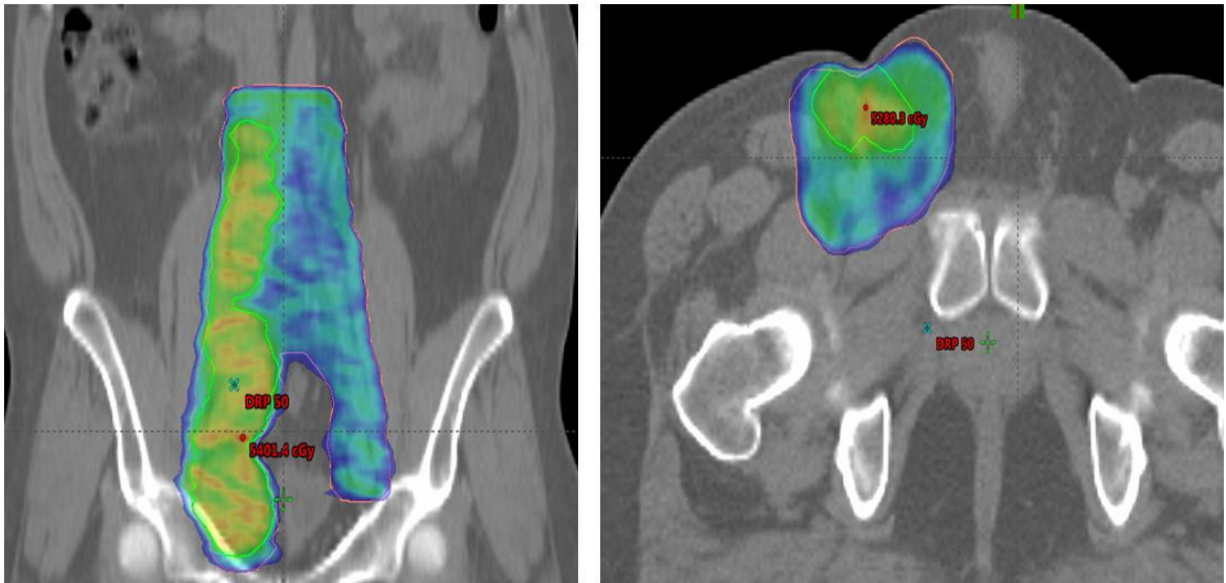
**Fig. S1.** PET-CT images used for initial tumour staging.



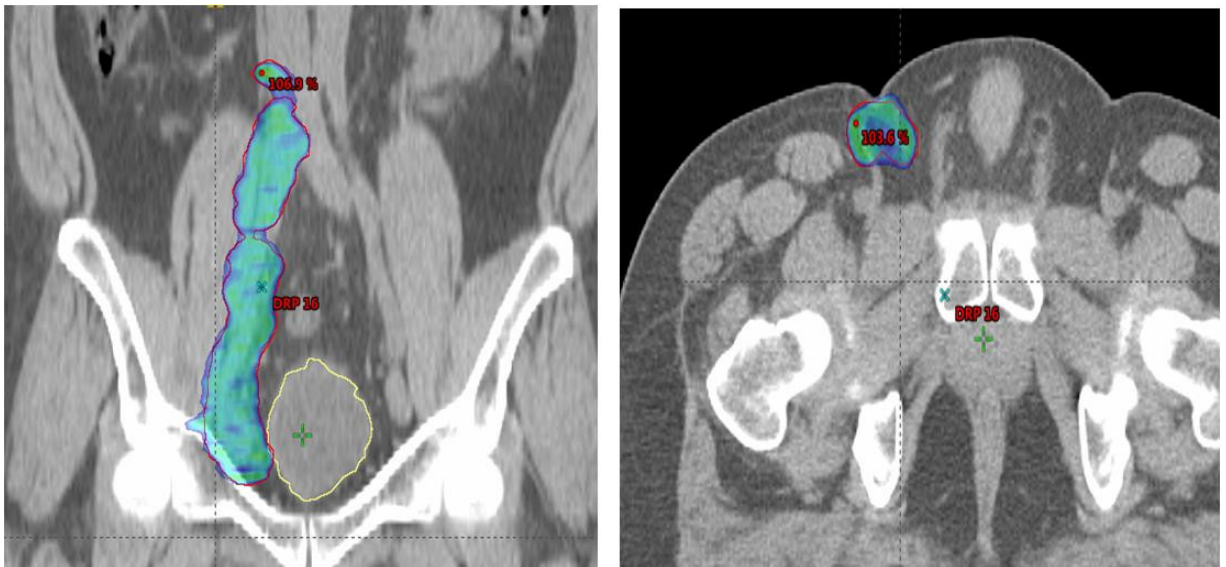
See additional images in the main text for before and after treatment with avelumab

**Fig. S2.** Radiation fields for radiotherapy.

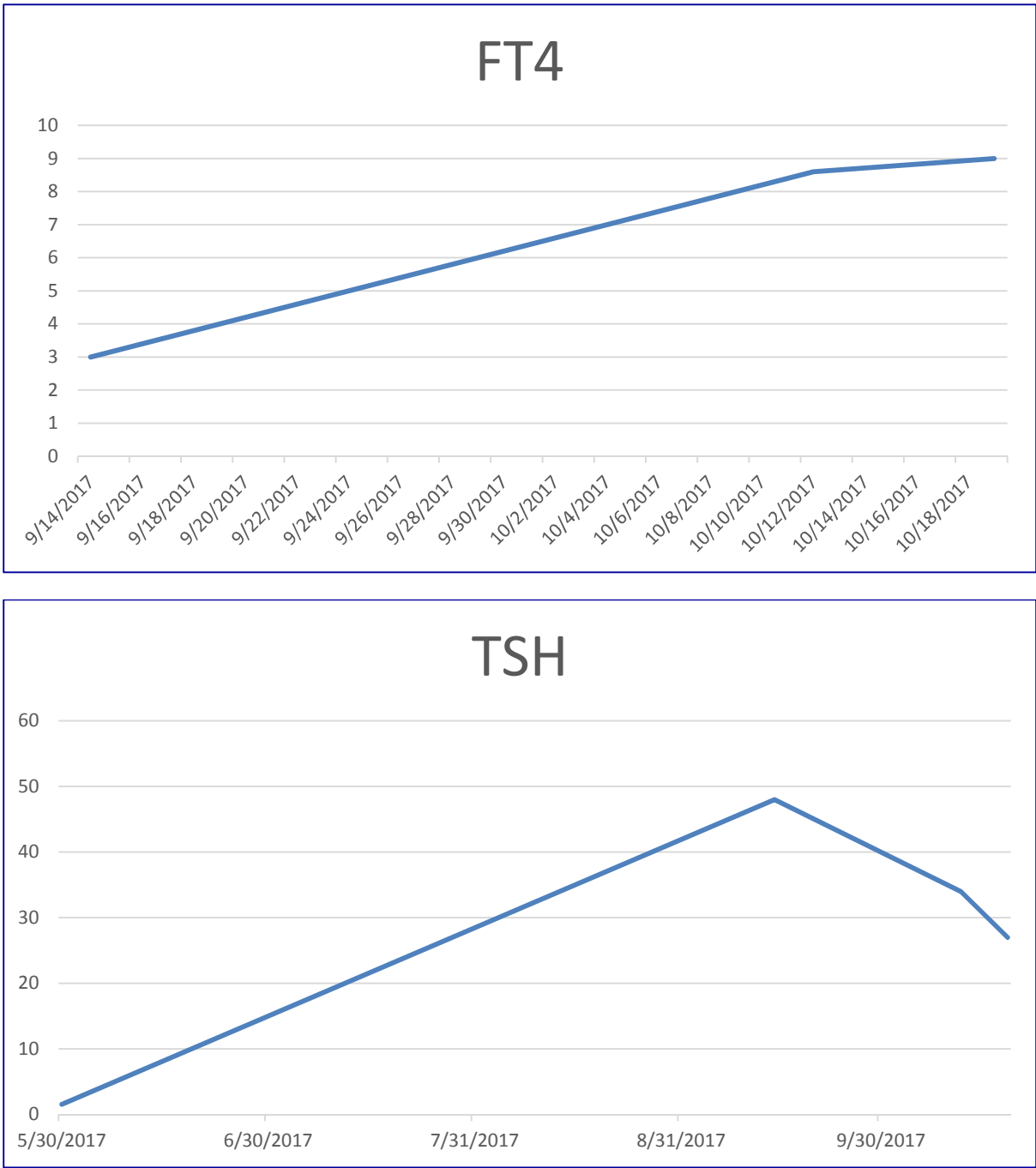
a) 45 Gy to Right pelvis and Inguinal area



b) Boost up to 66 Gy to involved nodes

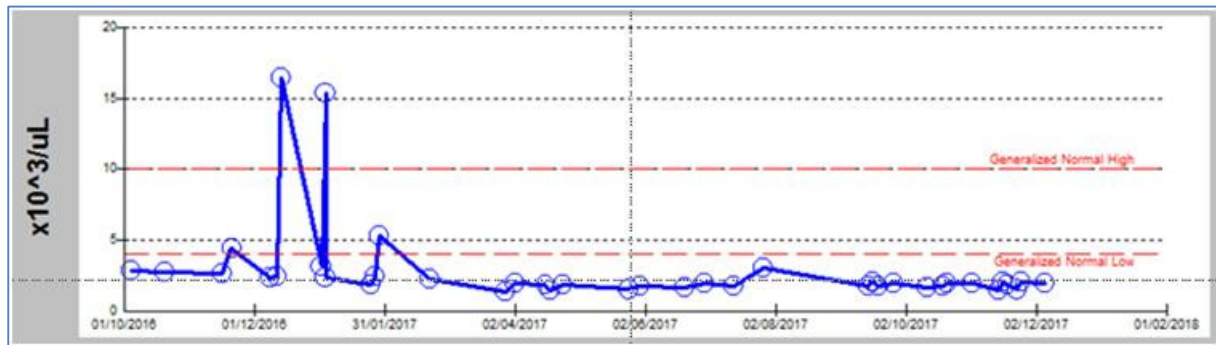


**Fig. S3.** Thyroid function tests during treatment with avelumab.

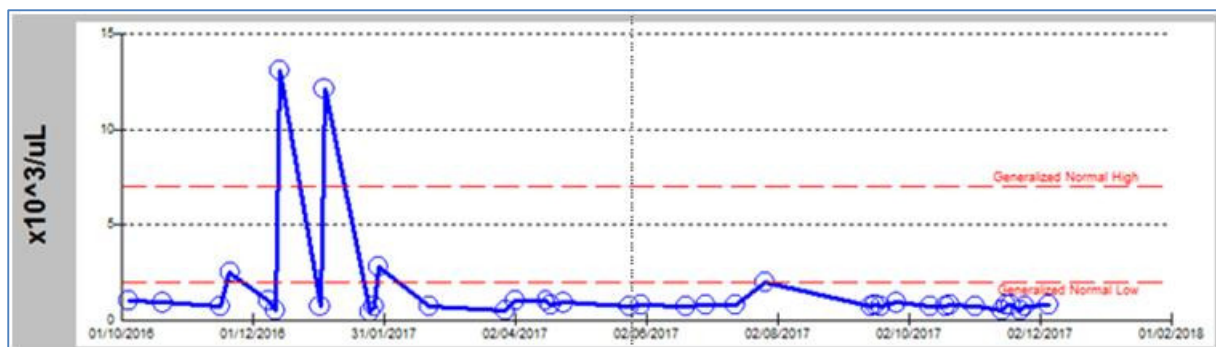


**Fig. S4.** Haematology profile during treatment with avelumab.

a) White blood cell count



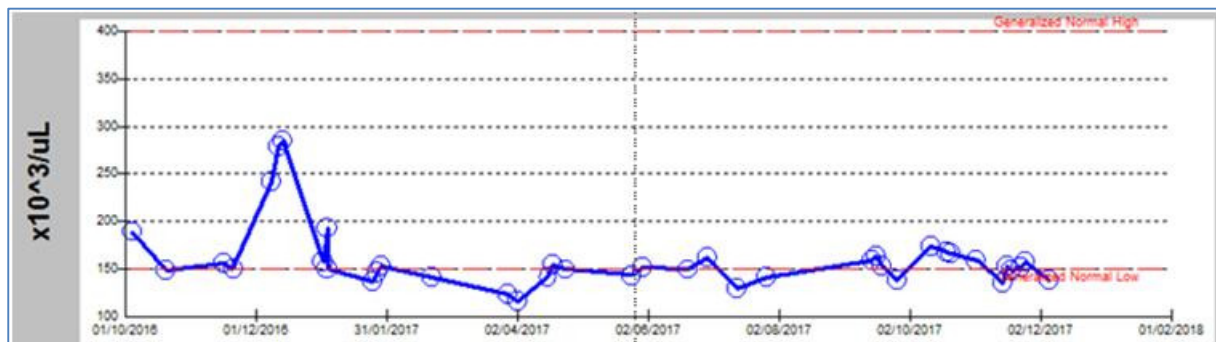
b) Absolute neutrophil count



c) Haemoglobin

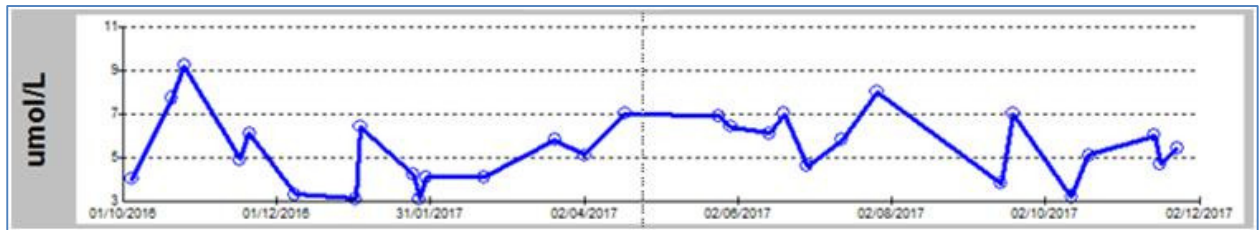


d) Platelet count

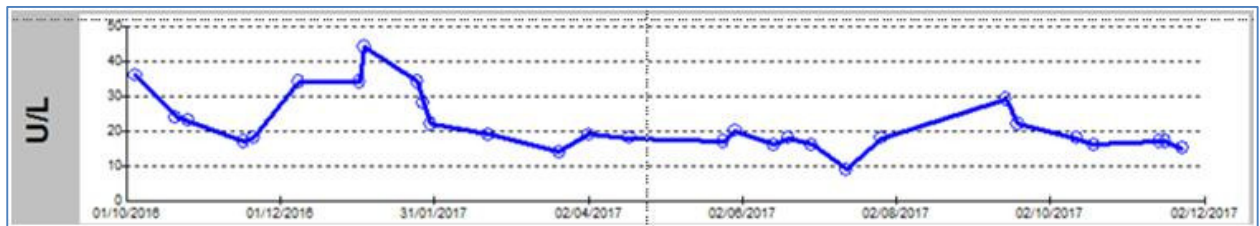


**Fig S5.** Liver function tests during treatment with avelumab.

a) Bilirubin



b) Alanine aminotransferase (glutamic oxaloacetic transaminase)

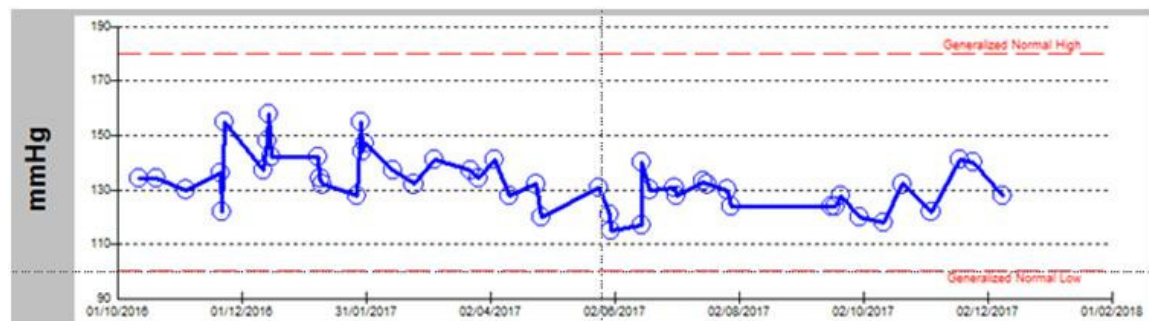


c) Alanine aminotransferase (glutamic pyruvic transaminase)



**Fig S6.** Blood pressures during treatment with avelumab.

a) Systolic blood pressure



b) Diastolic blood pressure

