

Supplementary Material

Tumor-Secreted Exosomal miR-222 Promotes Tumor Progression Via Regulating P27 Expression and Re-Localization in Pancreatic Cancer

Zhonghu Li^a Yang Tao^b Xiaoya Wang^c Peng Jiang^d Jie Li^d Minjie Peng^e
Xi Zhang^d Kai Chen^d Hui Liu^e Ping Zhen^d Jin Zhu^d Xiangde Liu^e Xiaowu Li^{d,e}

^aHepatobiliary Surgery Institute, Southwest Hospital, Army Medical University, Current address: Department of General Surgery, General Hospital of Wuhan, People's Liberation Army, Wuhan, ^bChongqing Key Laboratory of Translational Research for Cancer Metastasis and Individualized Treatment, Chongqing University Cancer Hospital & Chongqing Cancer Institute & Chongqing Cancer Hospital, Chongqing, ^cDepartment of Neurosurgery, the Second Affiliated Hospital of North Sichuan Medical College, Nanchong, ^dHepatobiliary Surgery Institute, Southwest Hospital, Army Medical University, ^eHepatobiliary Surgery & Carson International Cancer Shenzhen University General Hospital & Shenzhen University Clinical Medical Academy Center, Shenzhen University, Shenzhen, China

Supplementary figure legends

Fig S1 (A-D) Representative images of indicate treated Capan-1 (A-B) or Hs 766T-L3 (C-D) stained by TRITC-conjugated Phalloidin to indicate actin filaments and counterstained by FITC-conjugated vinculin to show focal contacts. The white arrows indicate the filopodia or lamellipodia. Scale bars = 50 μm .

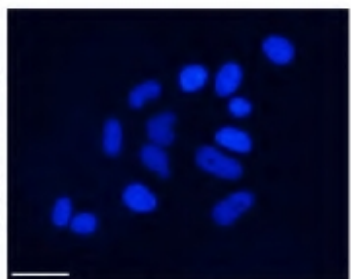
Fig S2 (A-F) The proliferation abilities of indicate treated Capan-1 (A-C) or Hs 766T-L3 (D-F) cells measured by EdU assays. Scale bars = 50 μm .

Fig S3 (A-B) The relative protein levels of p27 in indicate treated Capan-1 cells measured by immunofluorescence assays. Scale bars = 50 μm .

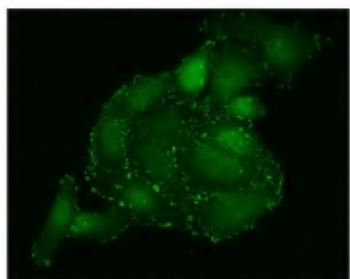
Fig S4 (A) Dil labeled exosomes were added into Calcein AM labeled Capan-1 cells for co-cultivation, images were captured with fluorescence microscope, the white arrows indicate exosomes. Scale bars = 25 μm . **(B)** Exosomes of GFP-CD63-Hs 766T-L3 were purified and added into RFP labeled Capan-1 cells for co-cultivation, images were captured with fluorescence microscope, the white arrows indicate exosomes. Scale bars = 25 μm . **(C)** RFP-labeled Capan-1 cells were co-cultured with GFP-CD63-Hs 766T-L3, then images were captured with fluorescence microscope. Scale bars = 25 μm . **(D)** Dio labeled exosomes of ov cy5-miR-222 Hs 766T-L3 were added into Capan-1 cells for co-cultivation, images were captured with fluorescence microscope. Scale bars = 25 μm .

A

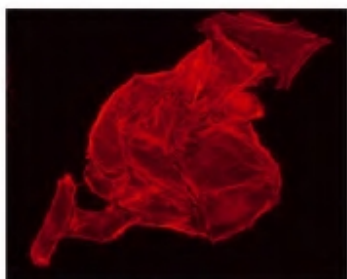
Capan-1 NC



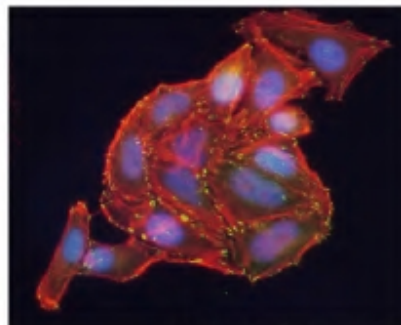
DAPI



FITC-Vinculin



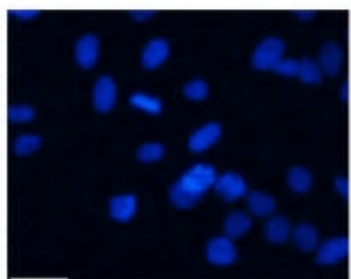
TRITC-Phalloidin



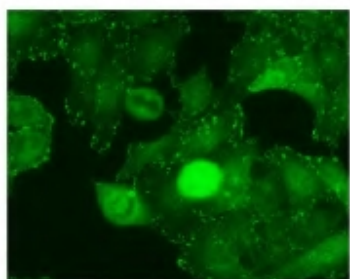
Merge

B

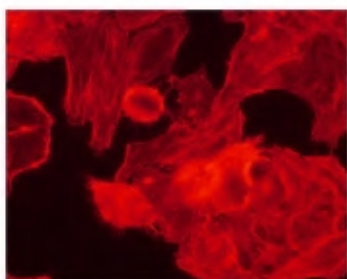
Capan-1 ov miR-222



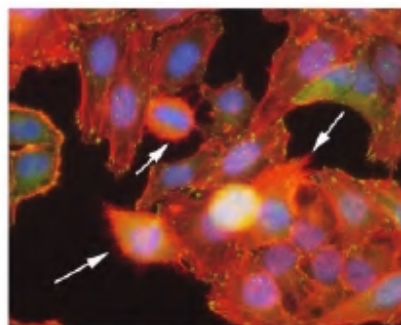
DAPI



FITC-Vinculin



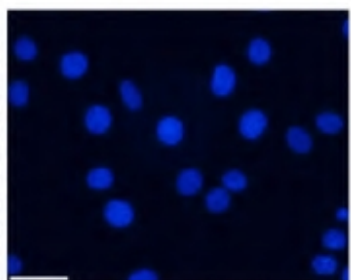
TRITC-Phalloidin



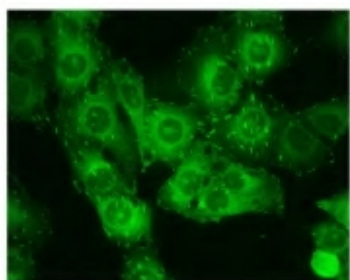
Merge

C

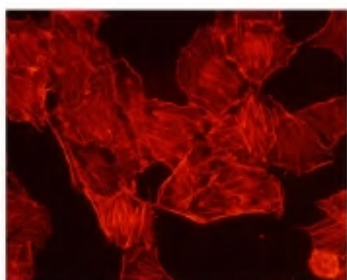
Hs 766T-L3 NC



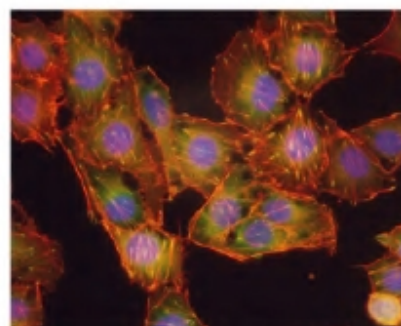
DAPI



FITC-Vinculin



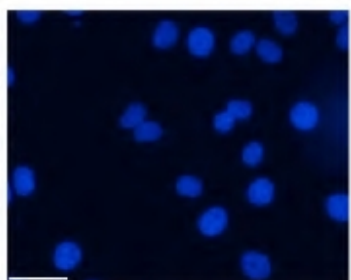
TRITC-Phalloidin



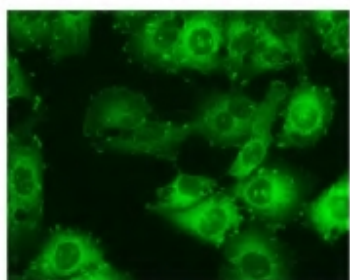
Merge

D

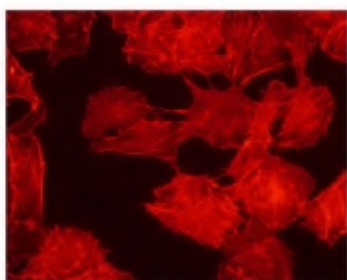
Hs 766T-L3 ov miR-222



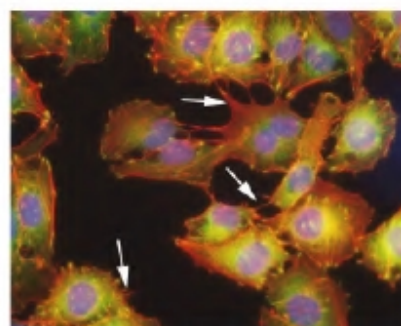
DAPI



FITC-Vinculin



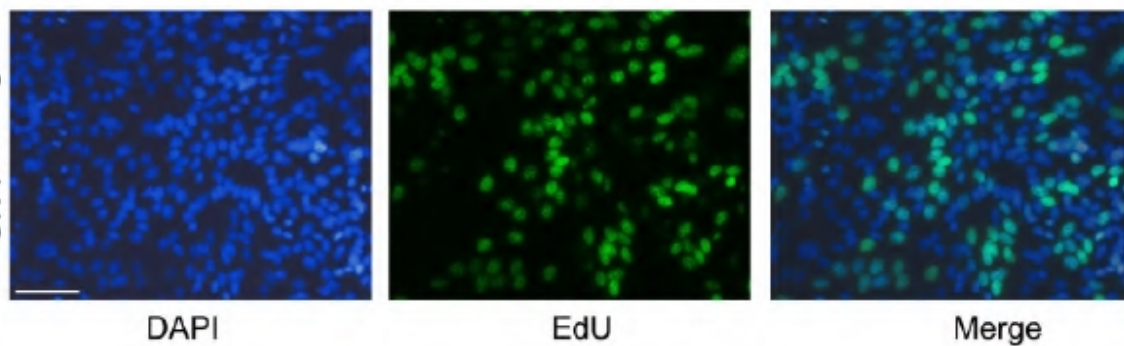
TRITC-Phalloidin



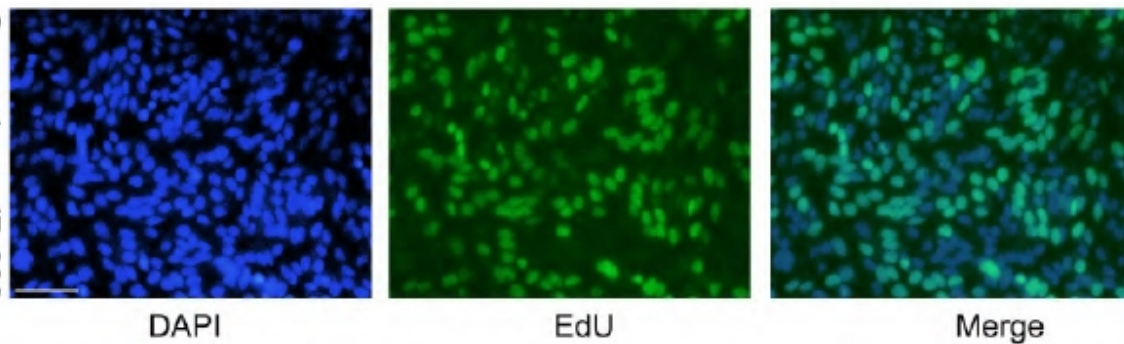
Merge

A

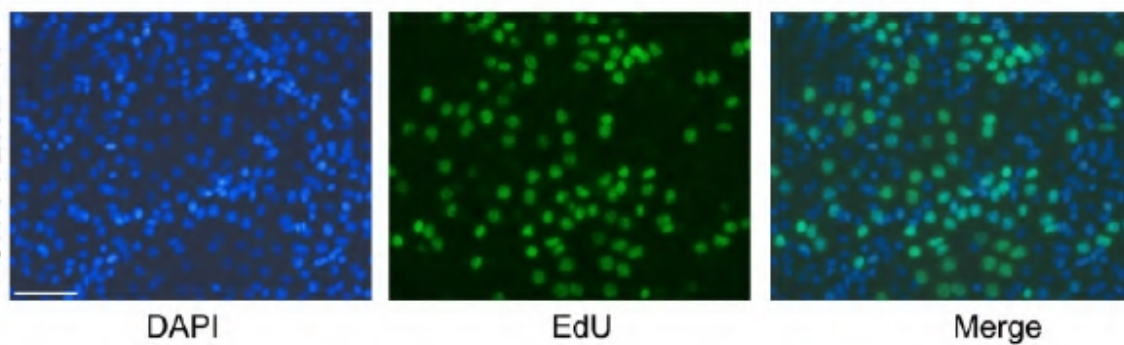
Capan-1 NC

**B**

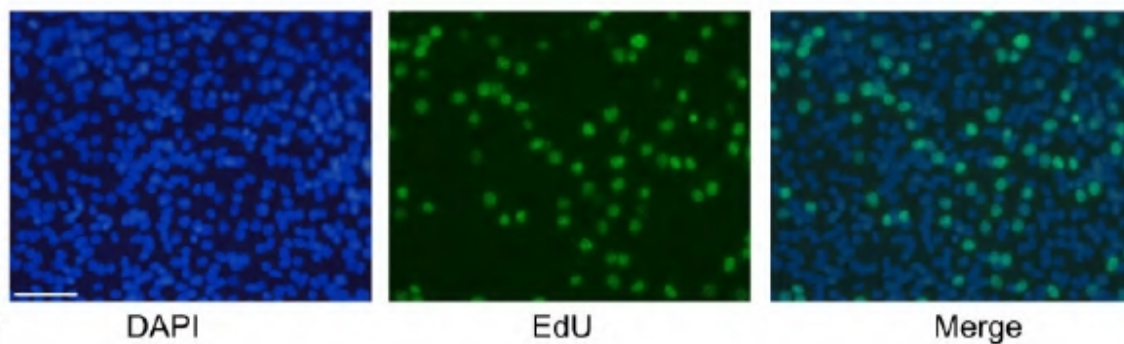
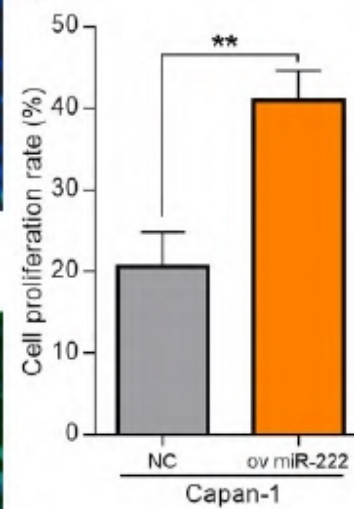
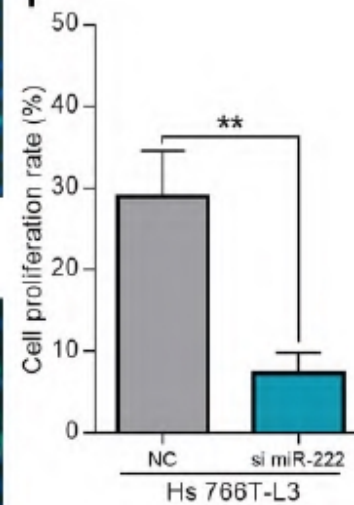
Capan-1 ov miR-222

**D**

Hs 766T-L3 NC

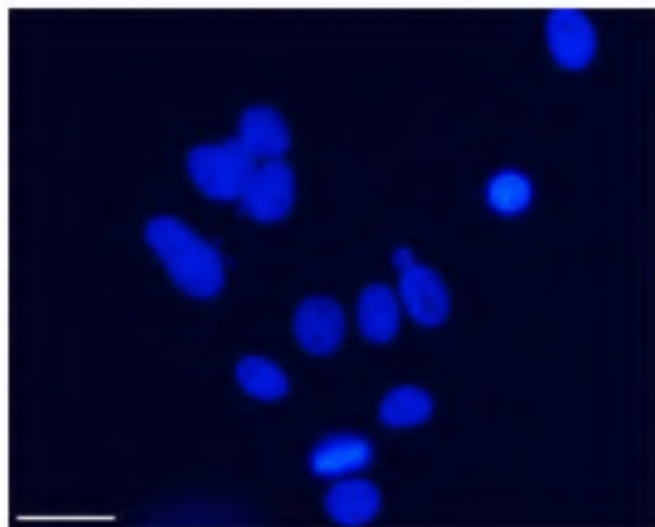
**E**

Hs 766T-L3 ov miR-222

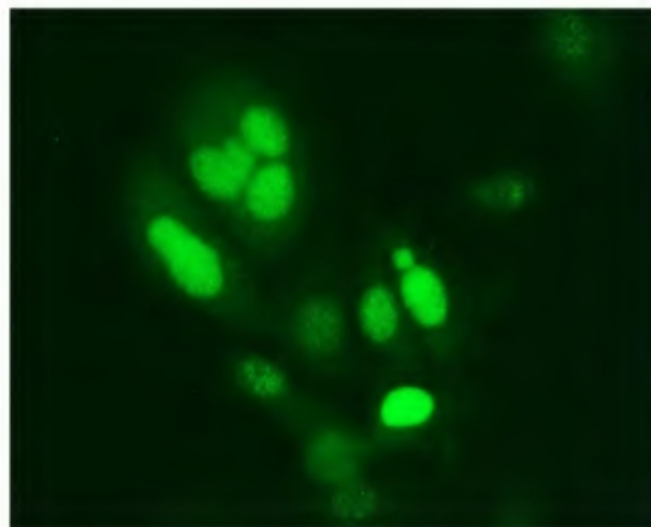
**C****F**

A

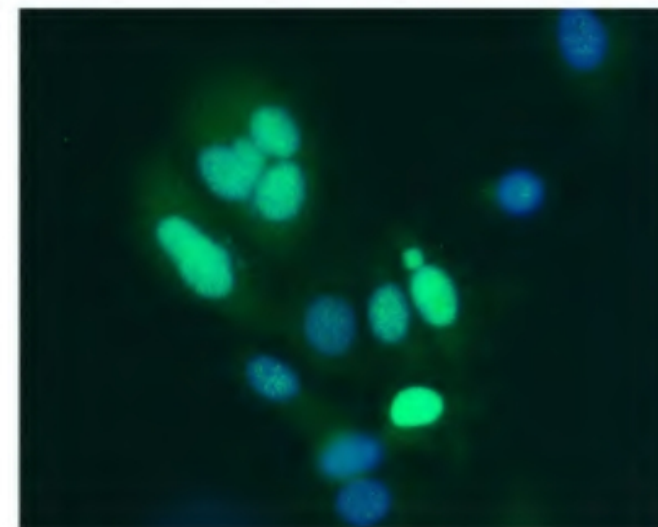
Capan-1 NC



DAPI



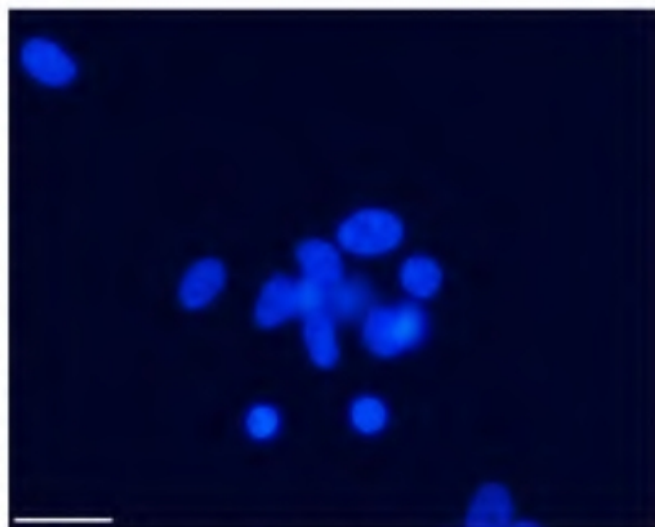
FITC-p27



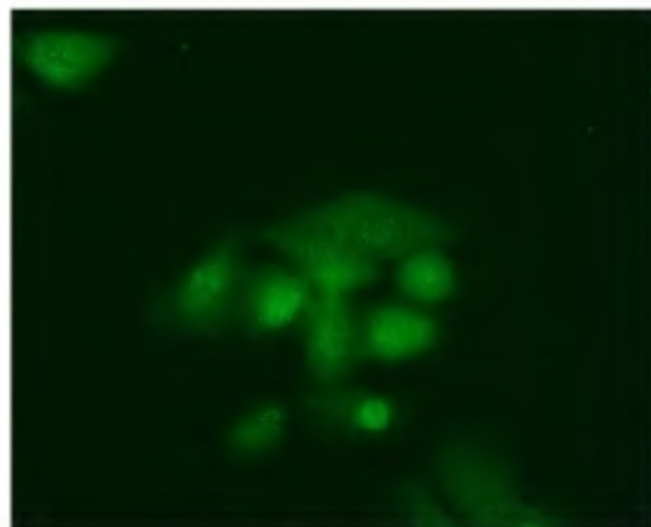
Merge

B

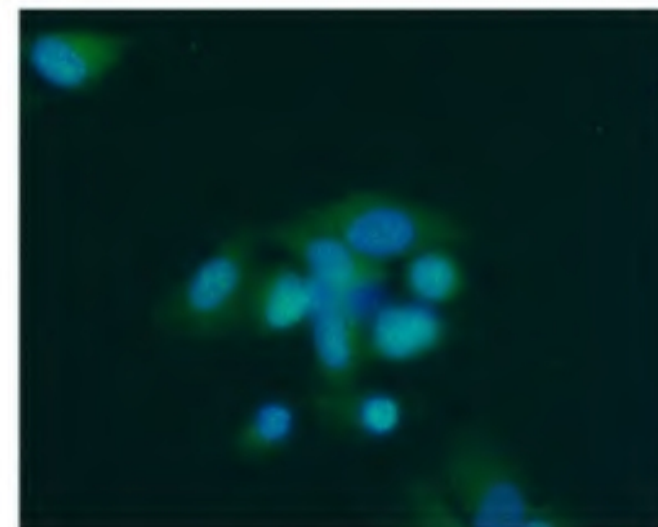
Capan-1 ov miR-222



DAPI



FITC-p27



Merge

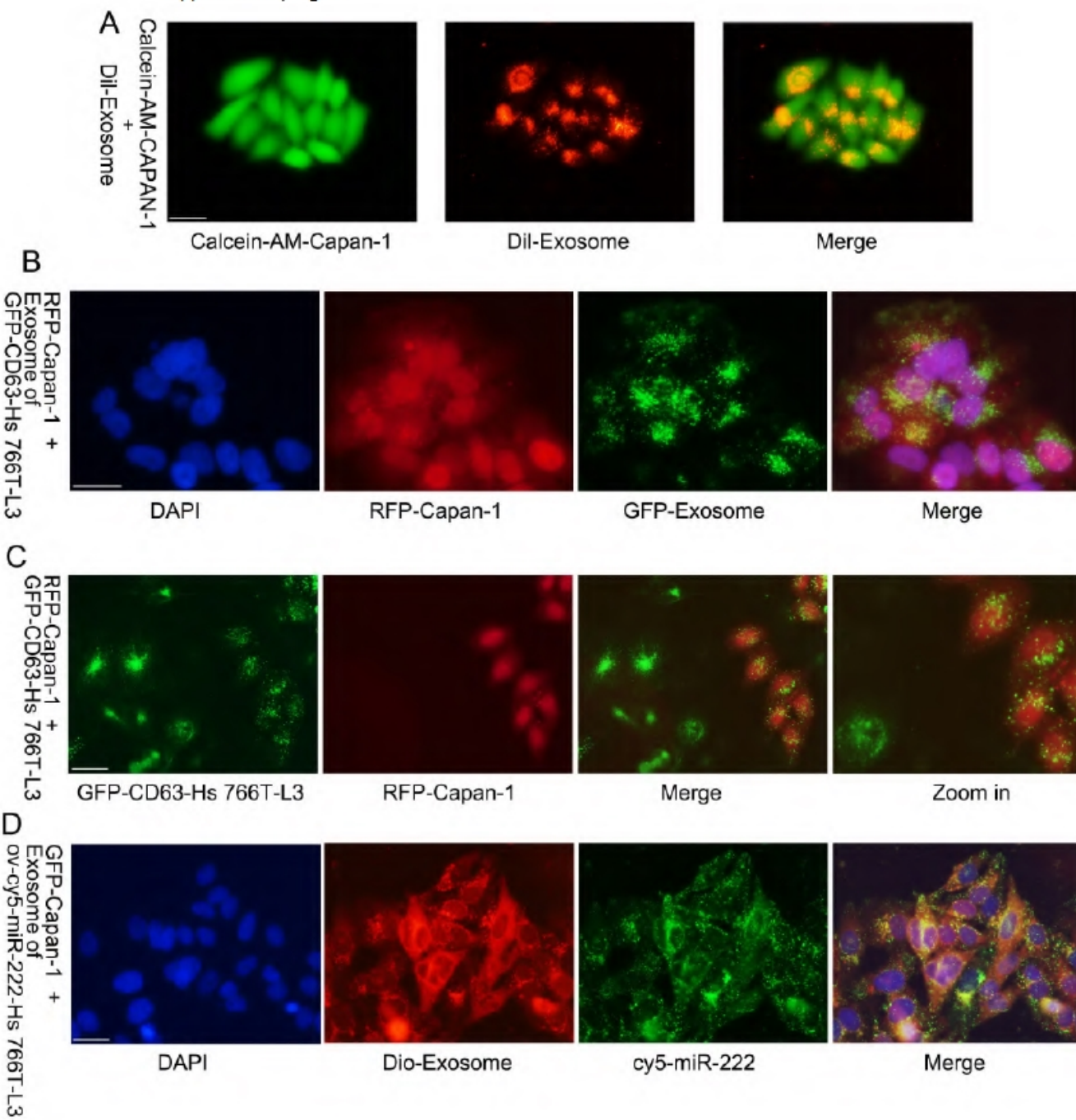


Table S1. Sequence of WILD-Type Human p27 or Mutant p27.

pGL3 p27
<p>aca gctcgaatta agaatatgtt tccttgttta tcagatacat cactgcttga tgaagcaagg aagatataca tgaaaatttt</p> <p>aaaaatacat atcgctgact tcatggaatg gacatcctgt ataagcactg aaaaacaaca acacaataac actaaaattt</p> <p>taggcactct taaatgatct gcctctaaaa gcgttggatgtagcattatg caattagggt ttccttatt tgcttcattg tactacctgt</p> <p>gtatatagtt ttacctttt atgtagcaca taaactttgg ggaagggagg gcaggggtggg gctgaggaac tgacgtggag</p> <p>cggggtatga agagcttgct ttgatttaca gcaagtagat aaatatttga cttgcatgaa gagaagcaat ttggggaag</p> <p>ggtttgaatt gttttcttta aagatgtaat gtcccttca gagacagctg atacttcatt taaaaaatc acaaaaattt</p> <p>gaacactggc taaagataat tgctatttat tttaacaaga agtttattct catttgggag atctggtgat ctccaagct</p>
pGL3 mut-p27
<p>aca gctcgaatta agaatatgtt tccttgttta tcagatacat cactgcttga tgaagcaagg aagatataca tgaaaatttt</p> <p>aaaaatacat atcgctgact tcatggaatg gacatcctgt ataagcactg aaaaacaaca acacaataac actaaaattt</p> <p>taggcactct taaatgatct gcctctaaaa gcgttggttatg caattagggt ttccttatt tgcttcattg tactacctgt</p> <p>gtatatagtt ttacctttt ca taaactttgg ggaagggagg gcaggggtggg gctgaggaac tgacgtggag cggggtatga</p> <p>agagcttgct ttgatttaca gcaagtagat aaatatttga cttgcatgaa gagaagcaat ttggggaag ggtttgaatt</p> <p>gtttcttta aagatgtaat gtcccttca gagacagctg atacttcatt taaaaaatc acaaaaattt gaacactggc</p> <p>taaagataat tgctatttat tttaacaaga agtttattct catttgggag atctggtgat ctccaagct</p>