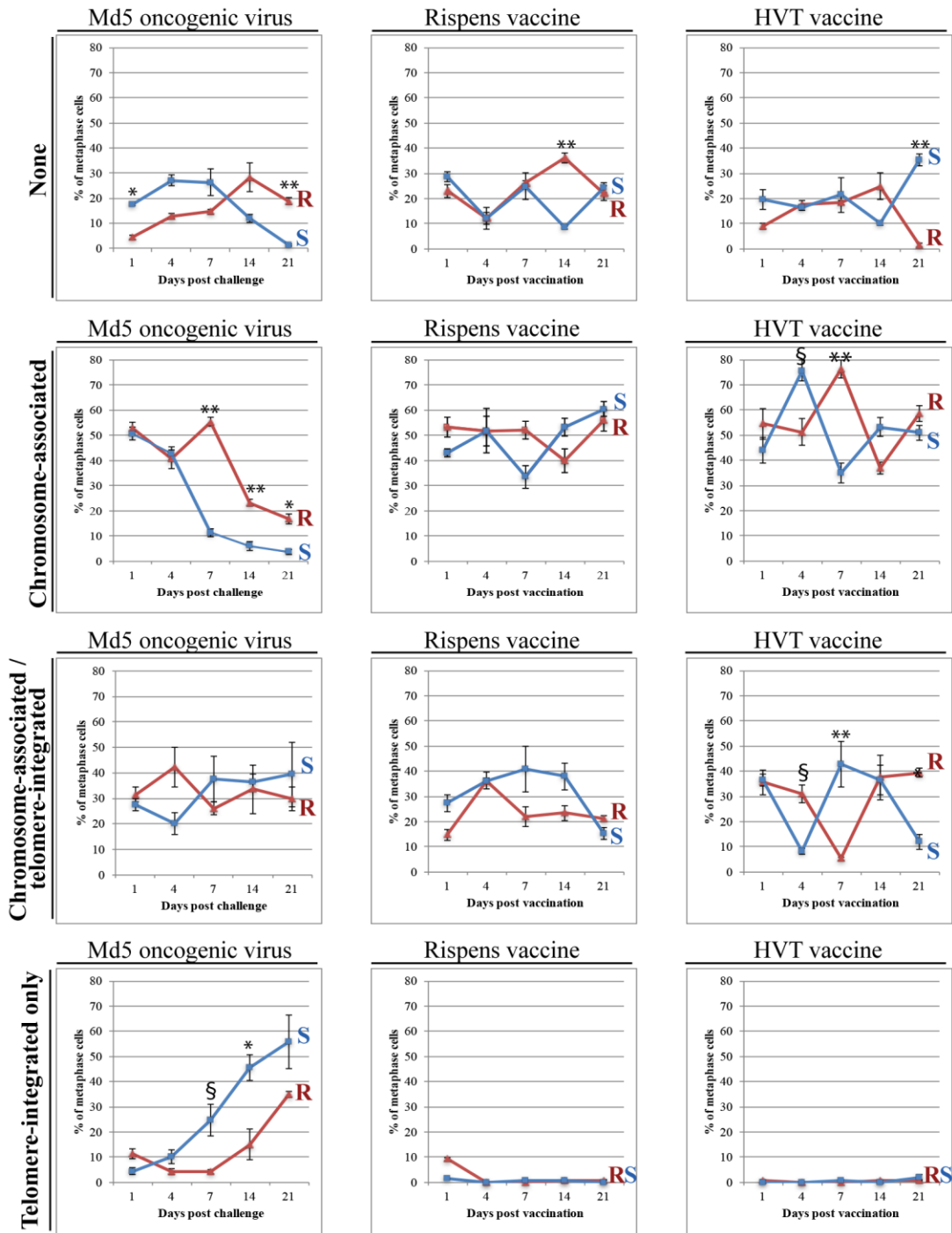


Supplementary

Figure S1.



Supplementary Figure 1. Temporal dynamics of virus-host cytogenomic interactions over time in single-treatment MD resistant (6₃) versus susceptible (7₂) genotype birds. Each column of graphs encompasses the cytogenomic phenotype data set for 6₃ (**MD-resistant**), shown as a **red line with an adjacent “R”**, and 7₂ (**MD-susceptible**), shown as a **blue line with an adjacent “S”**, genotype birds infected with a single treatment of oncogenic (Md5), or non-oncogenic (Rispen or HVT vaccine) MDV strains. The lines represent the mean percentage of mitotically-dividing host cells with a given phenotype \pm SEM for 3 birds per treatment group across all early timepoints (1-21 dpi). The mean percentage values that were statistically significant between genotypes 6₃ and 7₂ are indicated with a “§” ($p \leq 0.1$), “*” ($p \leq 0.05$) or “***” ($p \leq 0.01$) symbol.