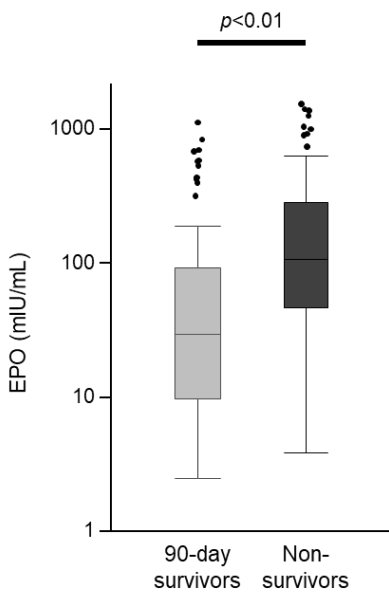


Supplementary Figure 1. EPO level in 90-day survivors and non-survivors.



Supplementary Figure 2. Elevated aminotransferase and increasing hepatic SOFA score.

When study participants were divided to two group by elevated aminotransferase or not, there were no differences in the proportion of worsening hepatic dysfunction. Elevated aminotransferase was defined as five times the upper limit value or more. Worsening hepatic dysfunction was defined as individual SOFA score newly developing to ≥ 2 or increasing to higher score than at day 1.

