

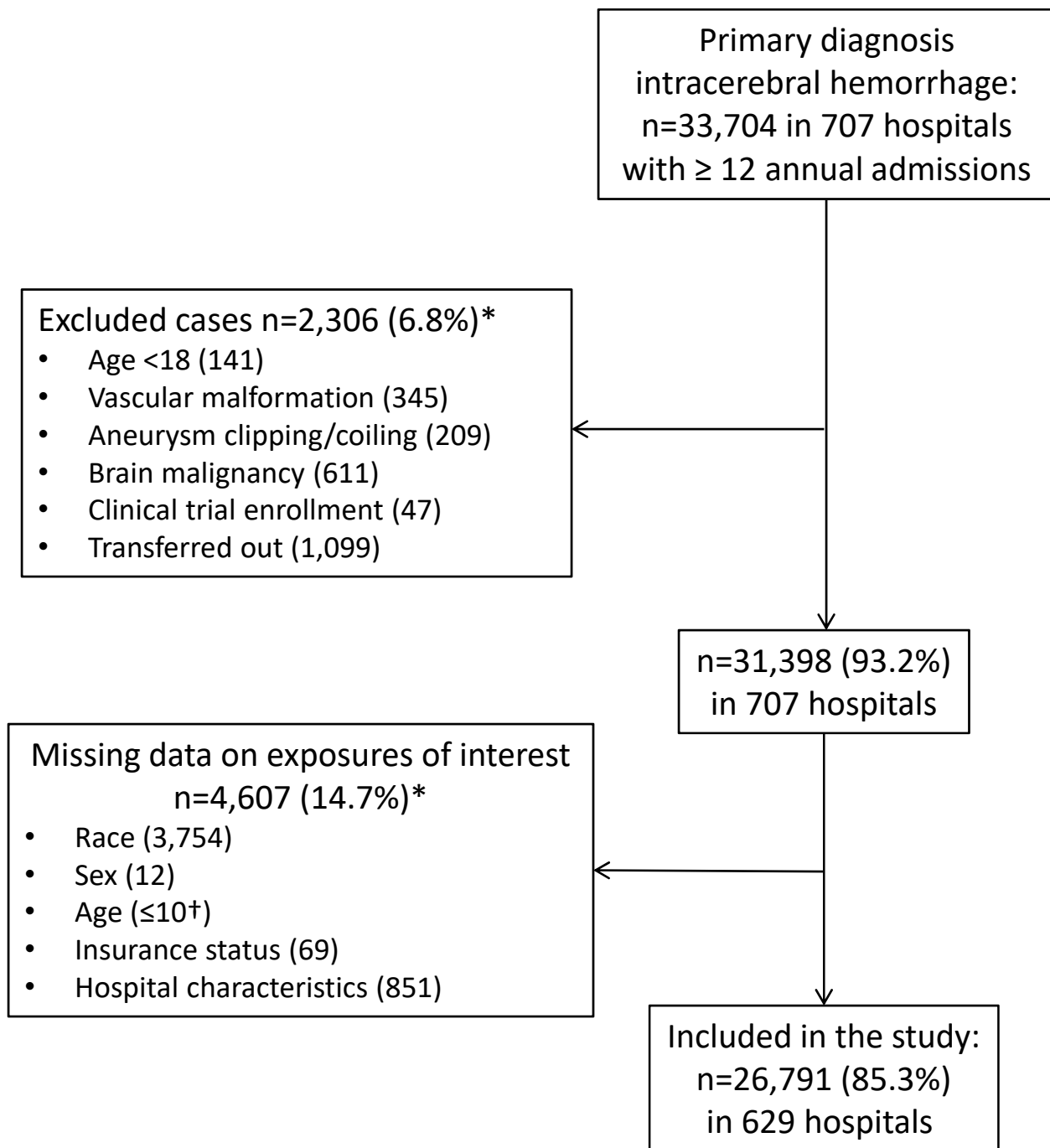
## SUPPLEMENTAL MATERIAL

Supplemental Table 1. Baseline characteristics of the study population stratified by palliative care use. Numbers given are n (%) unless stated otherwise. AMA: Against medical advice; APR-DRG: All patient refined diagnosis-related group; CCI: Charlson Comorbidity Index; LOS: Length of stay; PI: Pacific Islander; SNF: Skilled Nursing Facility.

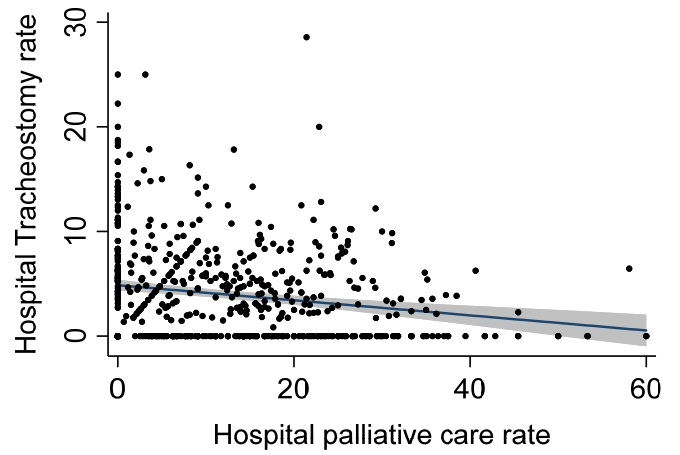
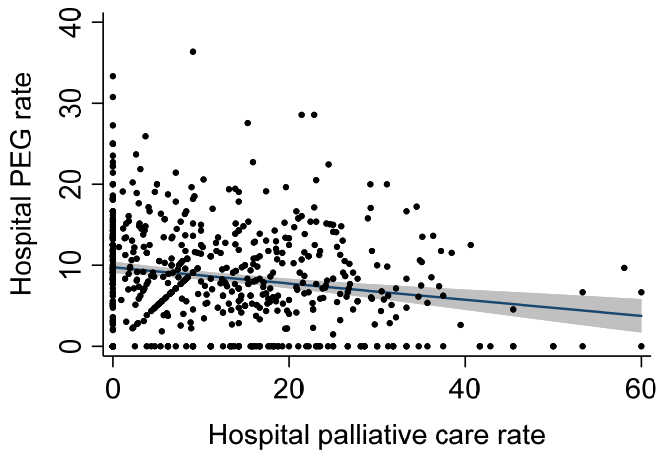
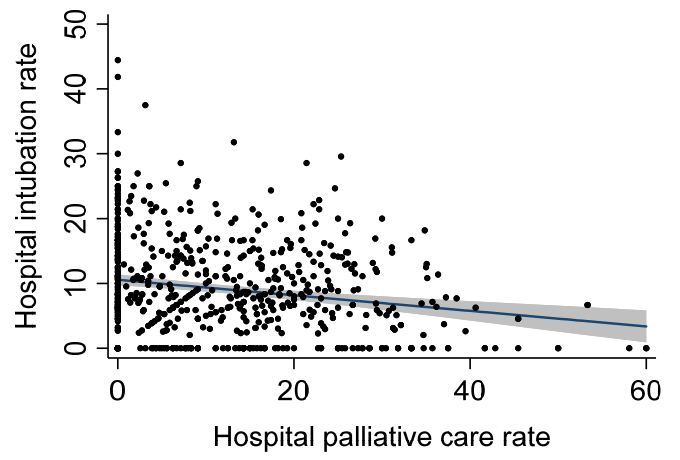
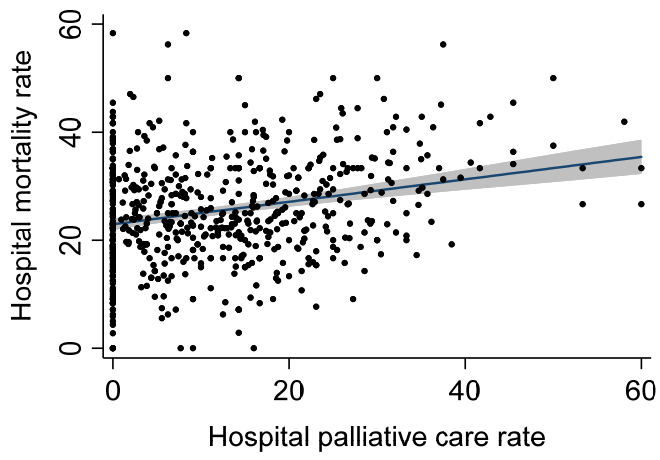
Characteristic	Palliative Care n=3,354 (12.5%)	No Palliative Care n=23,437 (87.5%)	p-value
<b>Age</b> – years: median (IQR)	78 (67-85)	70 (57-80)	<0.001
<b>Female</b>	1,844 (55.0)	11,365 (48.5%)	<0.001
<b>Race/Ethnicity</b>			<0.001
White	2,479 (73.9)	14,584 (62.2)	
Black	417 (12.4)	4,491 (19.2)	
Hispanic	205 (6.1)	2,263 (9.7)	
Asian/PI	139 (4.1)	1,160 (4.9)	
Other	114 (3.4)	939 (4.0)	
All ethnic minorities	875 (26.1)	8,853 (37.8)	
<b>Health Insurance</b>			<0.001
Medicare	2,345 (69.9)	13,516 (57.7)	
Medicaid	182 (5.4)	2,468 (10.5)	
Private Insurance	551 (16.4)	5,007 (21.4)	
Self-pay/other	276 (8.2)	2,446 (10.4)	
<b>Modified CCI</b>			0.018
0	1,526 (45.5)	10,871 (46.4)	
1	1,055 (31.5)	7,421 (31.7)	
2	439 (13.1)	3,190 (13.6)	
≥3	334 (10.0)	1,955 (8.3)	
<b>APR-DRG</b>			<0.001
Minor	141 (4.2)	1,658 (7.1)	
Moderate	581 (17.3)	7,073 (30.2)	
Major	1,383 (41.2)	8,846 (37.7)	
Extreme	1,249 (37.2)	5,860 (25.0)	
<b>LOS</b> – days: median (IQR)	3 (1-6)	5 (3-10)	<0.001
<b>Discharge Disposition</b>			<0.001
Home/Self-care	56 (1.7)	5,134 (21.9)	

Short-term hospital/ Rehab facility/SNF	272 (8.1)	10,881 (46.4)	
Home health care	41 (1.2)	1,728 (7.4)	
Home hospice	136 (4.1)	194 (0.8)	
Inpatient hospice	459 (13.7)	788 (3.4)	
Left AMA	≤10 (0.0)*	99 (0.4)	
Discharged alive, destination unknown	22 (0.7)	42 (0.2)	
In-hospital mortality	2,366 (70.6)	4,561 (19.5)	

\*The HCUP data user agreement precludes reporting individual cell counts ≤10.



**Supplemental Figure 1**



**Supplemental Figure 2**

## Supplemental Figure Legend

Supplemental Figure 1. Flow diagram indicating case selection. \*Categories are not mutually exclusive; †The HCUP data user agreement precludes reporting individual cell counts  $\leq 10$ .

Supplemental Figure 2. Scatter plots showing the correlation between hospital palliative care use and inpatient mortality rate (upper left), hospital rate of prolonged intubation (upper right), hospital PEG rate (lower left), and hospital tracheostomy rate (lower right). One hospital with 100% palliative care rate was excluded for this analysis. Each dot represents one hospital. An overlaying line of best fit with 95% confidence interval is shown.