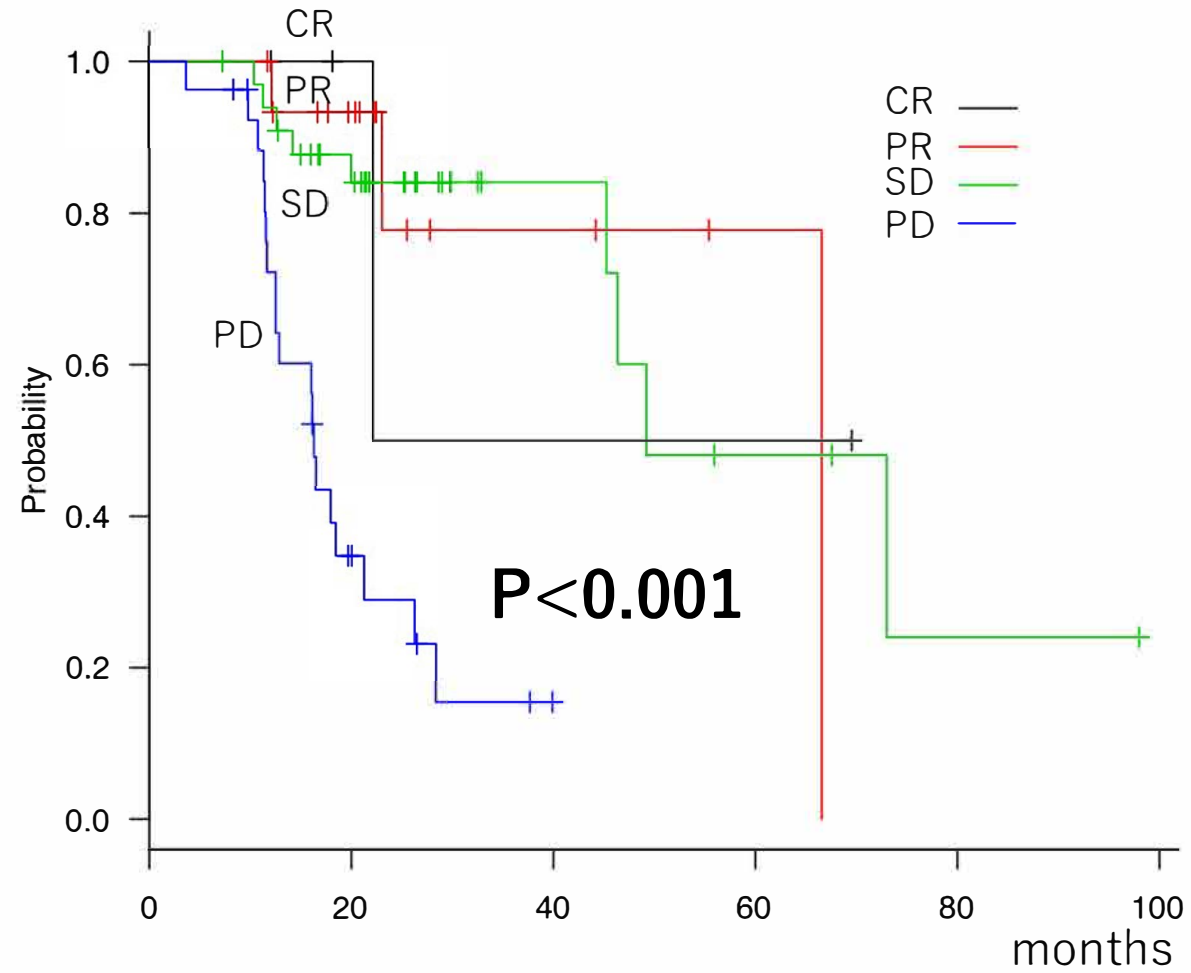


**Supplemental Figure 1.** Prognosis after introduction of TKI according to best therapeutic response with initial TKI treatment.

Influence of therapeutic efficacy of initial TKI treatment, following exclusion of patients without imaging findings (n=3). The prognosis of patients whose best therapeutic response to the initial TKI treatment was progressive disease (PD) (n=27) was worse as compared to the non-PD patients (n=54). (a) All patients. (b) PD vs. non-PD. Overall survival rate after 1, 2, and 3 years: 72.2% vs. 96.2%, 29.0% vs. 80.7%, 15.5% vs. 80.7%, respectively ( $P<0.001$ ).

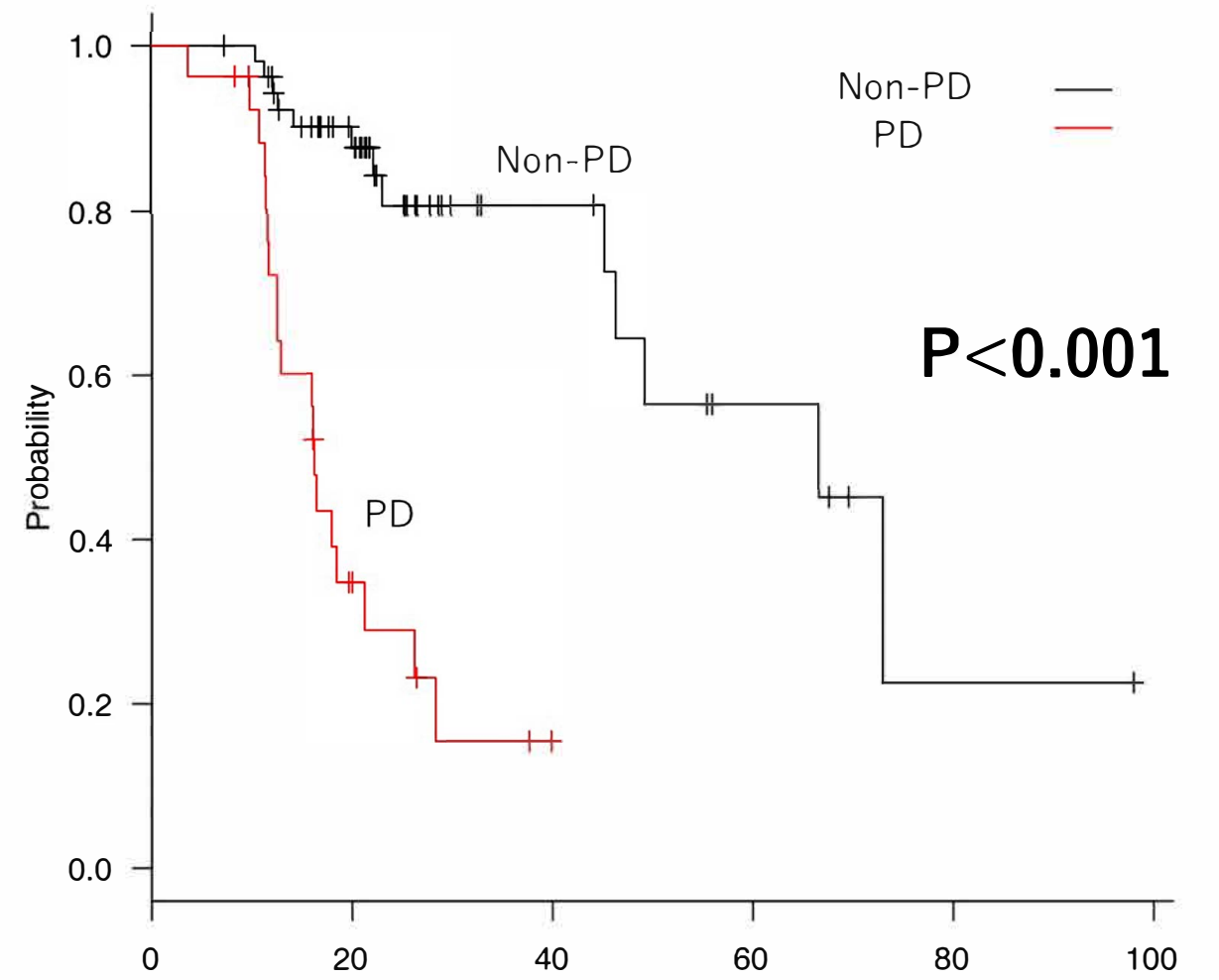
Supplemental Figure 1

a.



	Number at risk						
CR	4	2	1	1	0	0	
PR	16	10	3	1	0	0	
SD	34	24	7	3	1	0	
PD	27	7	0	0	0	0	

b.



	Number at risk						
Non-PD	54	36	11	5	1	0	
PD	27	7	0	0	0	0	