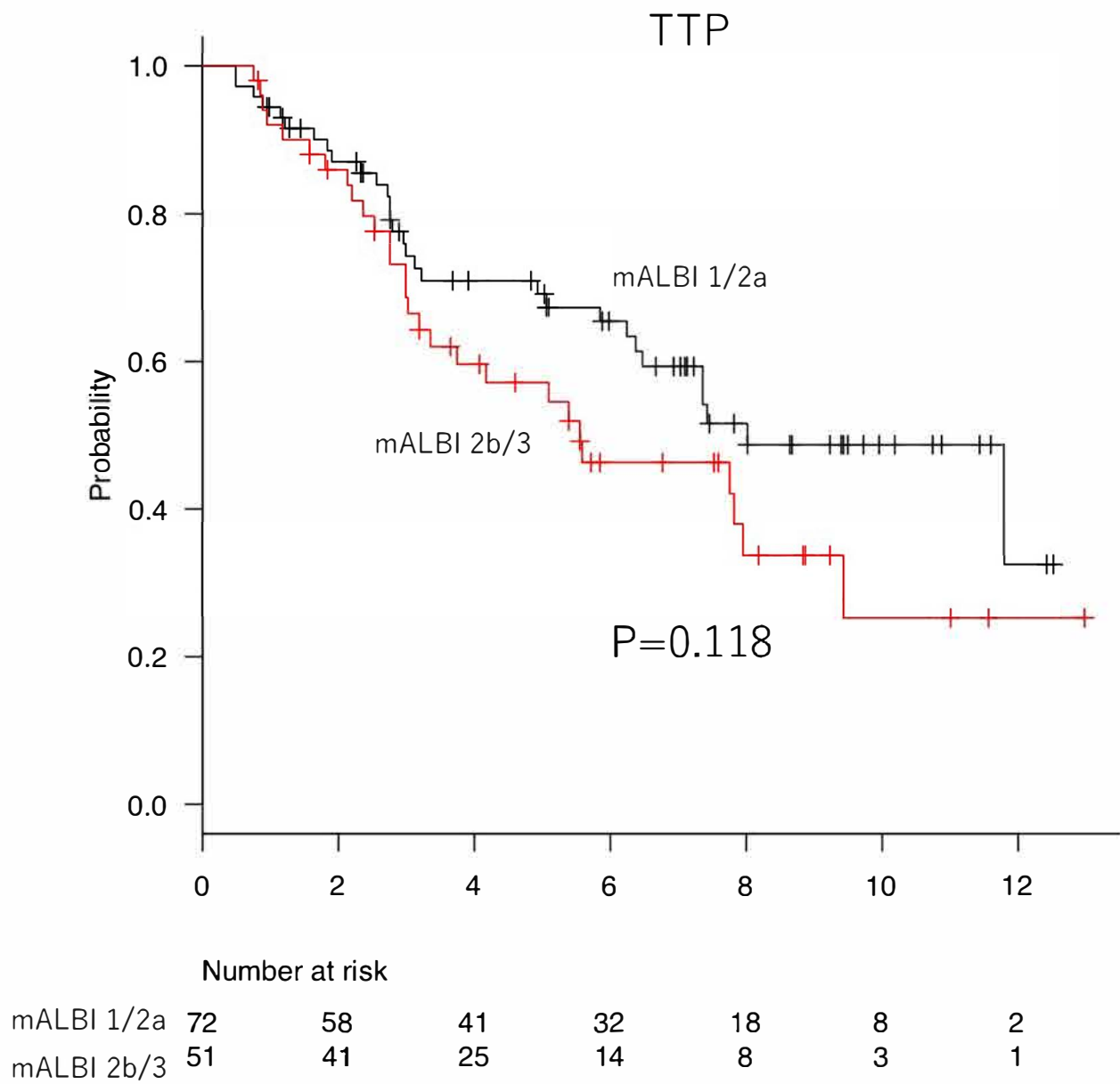
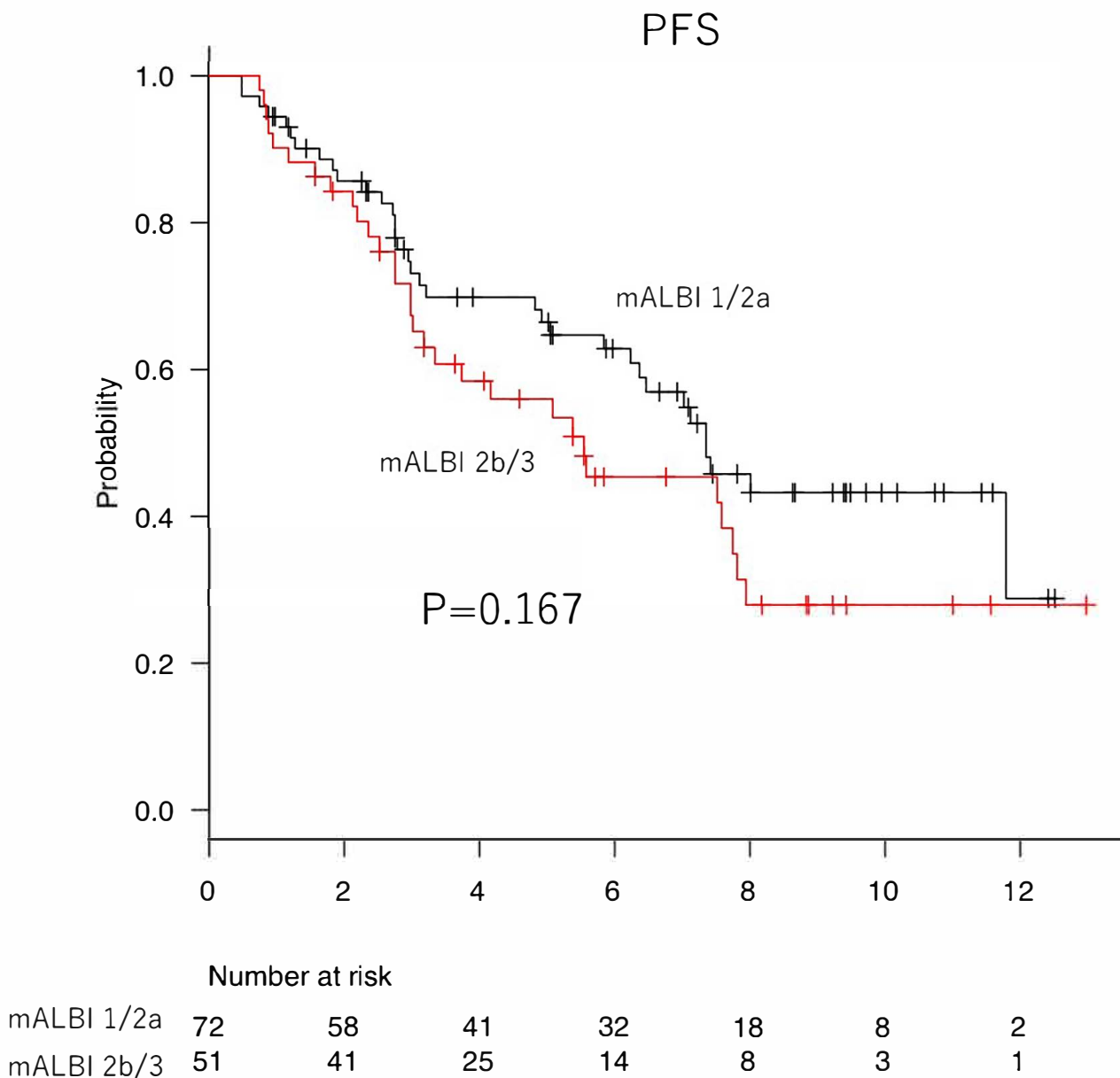


Supplementary Figure 1a



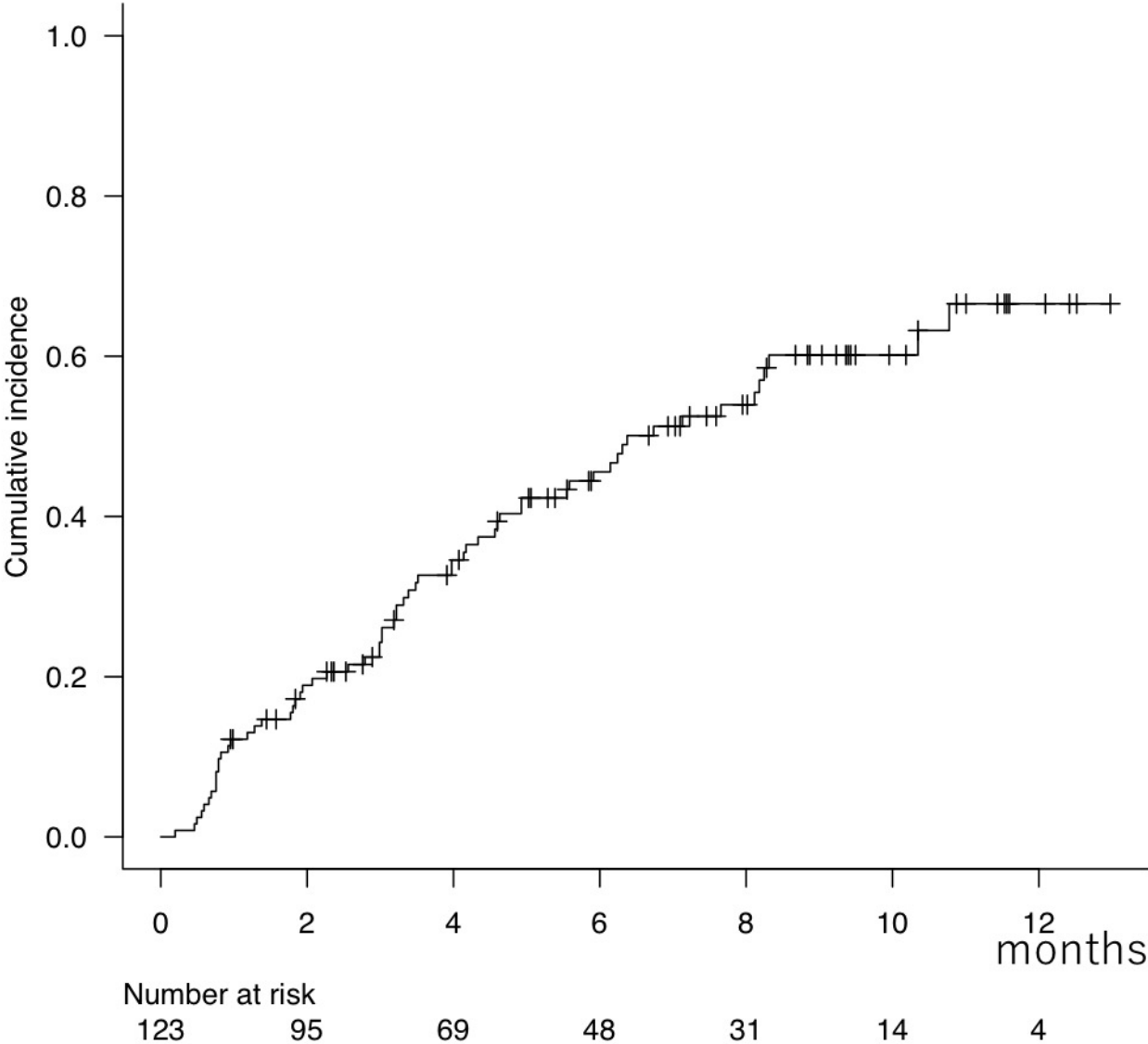
Supplementary Figure 1b



**Supplemental Figure 1.** Comparisons of time to progression and progression-free survival between modified albumin-bilirubin grade 1/2a and 2b/3.

There were no significant differences in time to progression (TTP) or progression-free survival (PFS) between patients with grade 1/2a and 2b/3 (P=0.118 and P=0.167, respectively).

Supplemental Figure 2



**Supplemental Figure 2.** Discontinuation rate of lenvatinib.

Discontinuation rates of lenvatinib at 2, 4, 12 and 24 weeks were 1.6%, 11.3%, 21.5% and 43.4%, respectively.