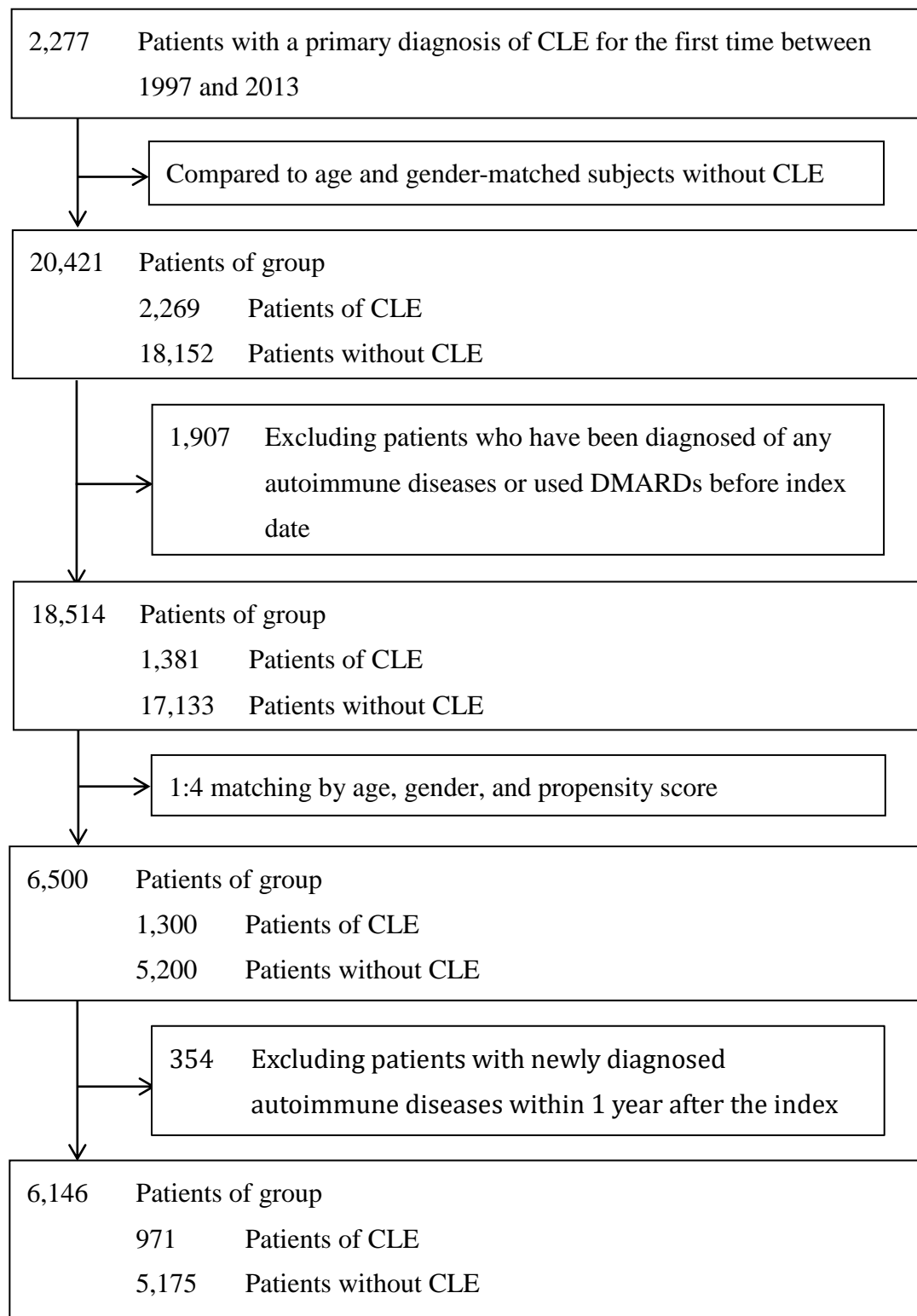


Long term risk of autoimmune diseases other than systemic lupus erythematosus in cutaneous lupus erythematosus-alone patients: a 10-year nationwide cohort study

Short title: Risk of autoimmune diseases in cutaneous lupus erythematosus-alone patients

Teng-Li Lin, MD,¹ Chun-Ying Wu, MD, PhD, MPH, LL.M.,²⁻⁷ Chao-Kuei Juan, MD,^{1,2} Yun-Ting Chang, MD, PhD,^{2,8} Yi-Ju Chen MD, PhD,^{1,2,7*}

Supplementary Fig. 1. Flow chart for patient selection



Abbreviation: CLE, cutaneous lupus erythematosus; DMARDs, disease-modifying antirheumatic drugs