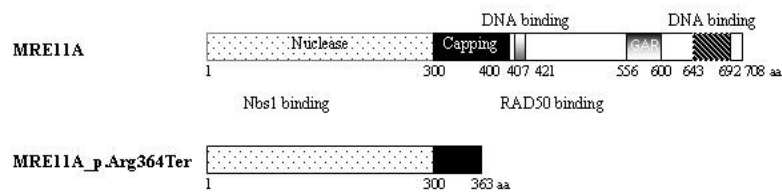
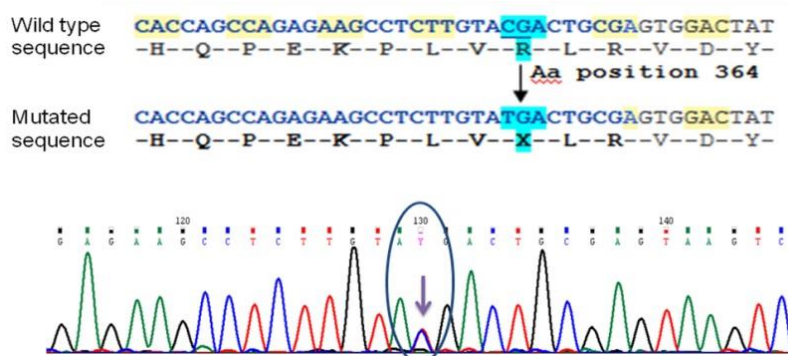


Supplementary fig. 1. Pedigree chart of the family.

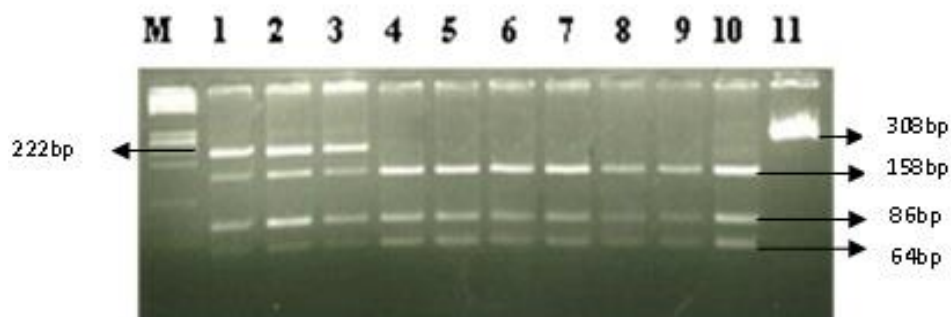


Supplementary fig. 2. Domain organization of wild-type and mutant (MRE11A_p.Arg364Ter) MRE11A proteins.

Supplementary Figures.



Supplementary fig. A. Electropherogram of the mutated sequence. The c.1090C>T alteration in the *MRE11A* gene results in p.Arg364Ter amino acid change



Supplementary fig. B. Ethidium bromide stained agarose gel showing RFLP analysis. Lane M (Molecular marker); Lanes 1-4: family members [lane 1 (III-1), lane 2 (III-2) and lane 3 (III-3) are heterozygous for c.1090C>T mutation while lane 4 (IV-1) is unaffected]; Lanes 5-10 (normal controls); Lane 11 (undigested PCR product)