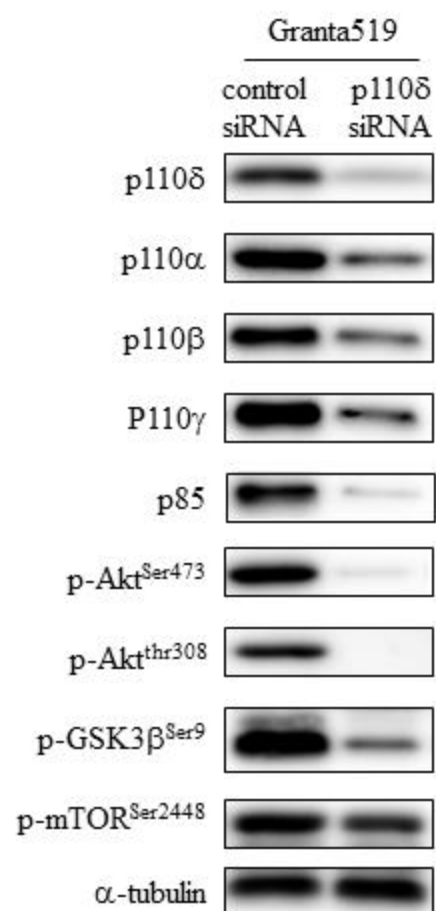


Supplementary Table 1. Clinical characteristics of MCL patients

Patient number	source	age/sex	Cytogenetics (FISH)
1	BM	74/M	IGH/BCL-1 (CCND1) 59.8%
2	PB	63/F	IGH/BCL-1 (CCND1) 34.0%

Supplementary Figure 1



Supplementary Figure 1. p110 δ knockdown abrogated p85 and decreased other PI3K isoforms expression. Granta 519 cells were transfected with p110 δ siRNA or control siRNA as described in Materials and Methods. After 48 hours of transfection, clarified cell lysates were probed with antibodies to p110 δ , p110 α , p110 β , p110 γ , p85, p-Akt^{Ser473}, p-Akt^{Thr308}, p-GSK3 β ^{Ser9}, p-mTOR^{Ser2448} and α -tubulin. Western blot results shown are representative of three independent experiments.