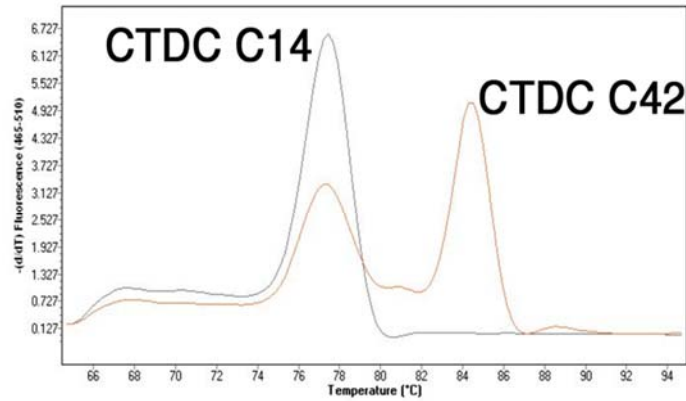


Supplemmetary Figure 1



Online Supplementary Fig. 1. High-resolution melting curve *TLR5* R392X genotyping. Genomic DNA samples from peripheral blood monocytes were isolated and screened for *TLR5* (R392X, rs5744168). End-point analysis was made by high-resolution melting curve analysis using LightCycler 480 software (Roche). CTDC C42 – red histogram and CTDC C14 – blue histogram.