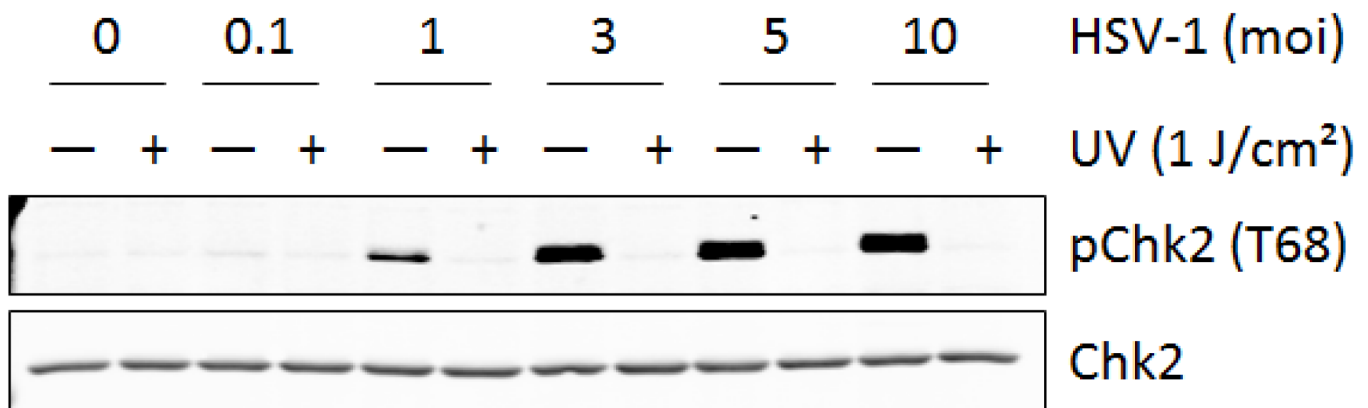
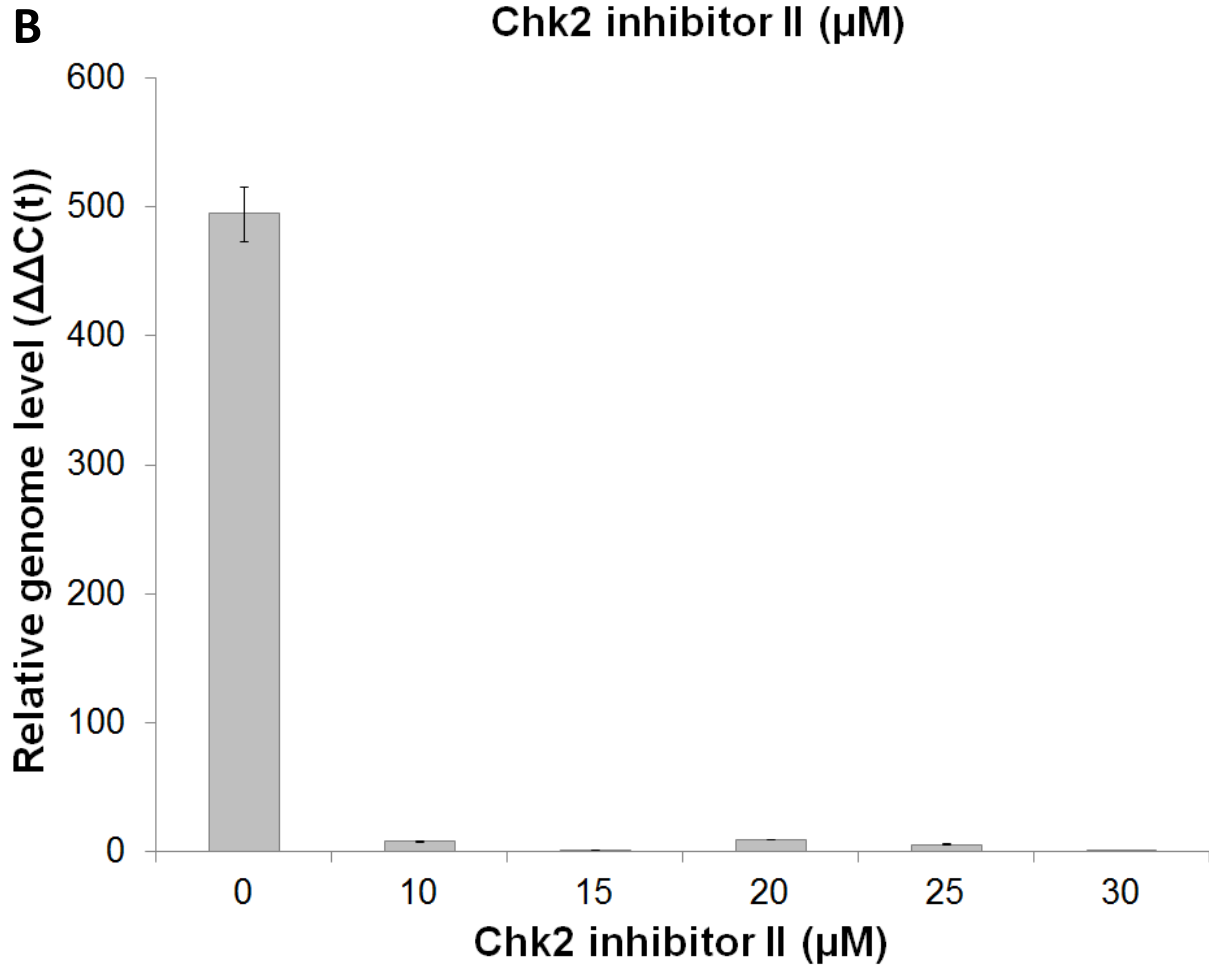
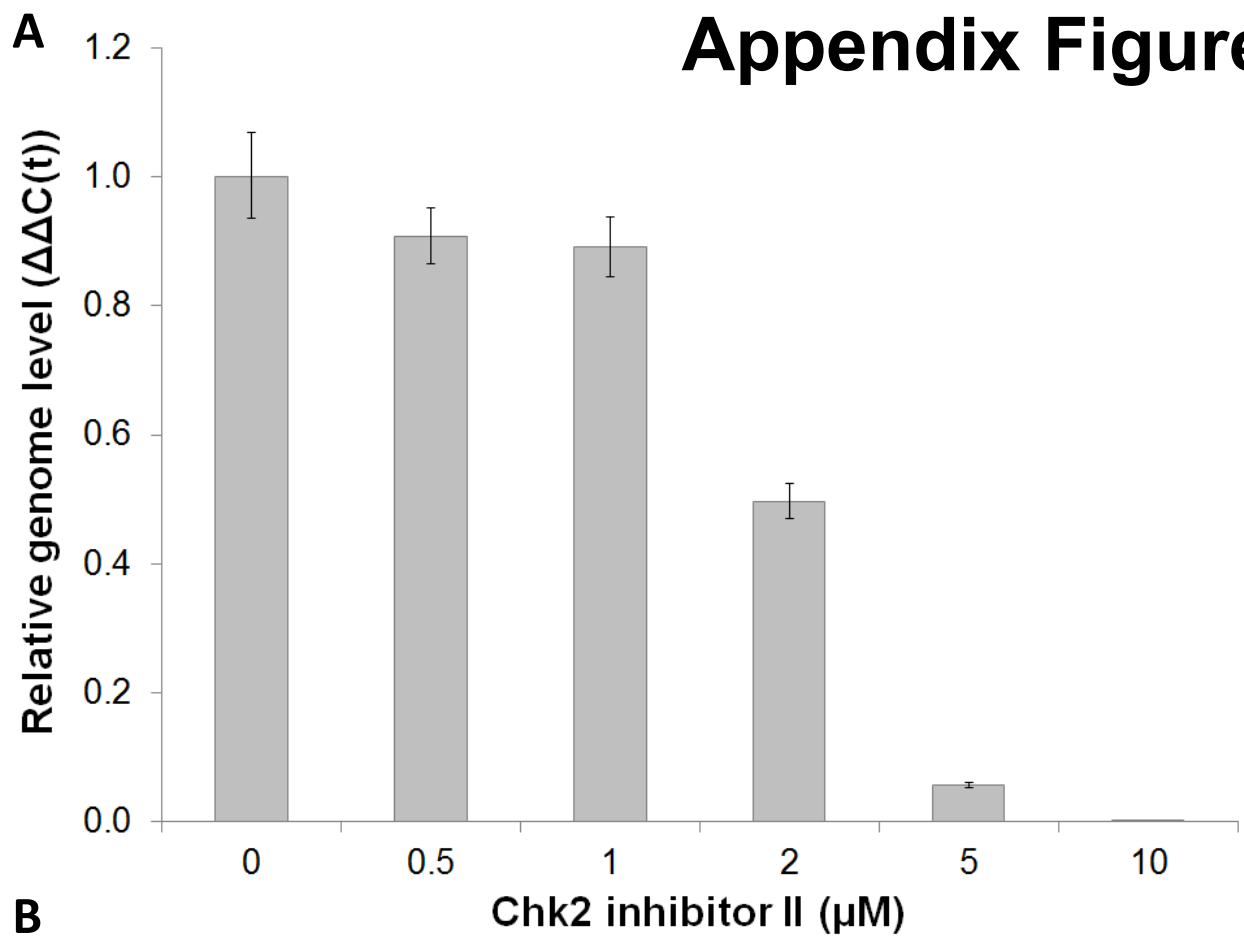


Appendix Figure 1



Appendix Figure 2



Appendix Figure 1. Activation of Chk2 in HSV-1-infected human corneal epithelial cells is not due to a contaminant present in the viral inoculum. hTCEpi cells were infected with HSV-1 at the indicated MOI range. The virus was inactivated by exposure to 1 J/cm² of UV (+) or mock-treated (-) prior to infection. Protein lysates were collected at 1 hpi and analyzed by Western blot with antibodies against pChk2 (Thr 68) and tChk2. n = 2.

Appendix Figure 2. Dose-optimization of Chk2 inhibitor II in human corneal epithelium. **(A)** hTCEpi cells were infected with HSV-1 at MOI 0.1 and treated with a dose range (0--10 μ M) of Chk2 inhibitor II. **(B)** Human corneas were infected *ex vivo* with 1x10⁴ PFU/cornea. At 1 hpi, they were treated with a dose range (10--30 μ M) of Chk2 inhibitor II. DNA was isolated from cultured cells and corneal epithelial layers at 20 hpi and 48 hpi, respectively, and analyzed by qPCR with primers for the viral genome and GAPDH. Bars represent average $\Delta\Delta C(t)$ values \pm SEM. n = 3 reaction replicates.