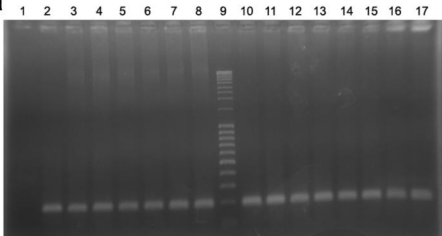
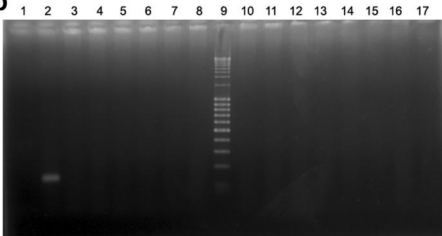


a**b**

Supplementary Figure 1- To assess the homing of GFP-labeled USSC in the kidneys with a sensitive method, DNA was extracted from kidneys and the existence of GFP gene was assessed by real time PCR. Although TBP which was used as internal control could be detected in all samples, we did not detect any signal for GFP in kidney samples. To further confirm the data, we visualized PCR products by agarose gel electrophoresis. The gel pictures for TBP (a) and GFP (b) in one of the experiments are shown. In each gel image lanes are as follows: 1: No Template Control, 2: Positive Control, 3--8 samples of the control group, 9: size marker, 10--17: samples of USSC group.